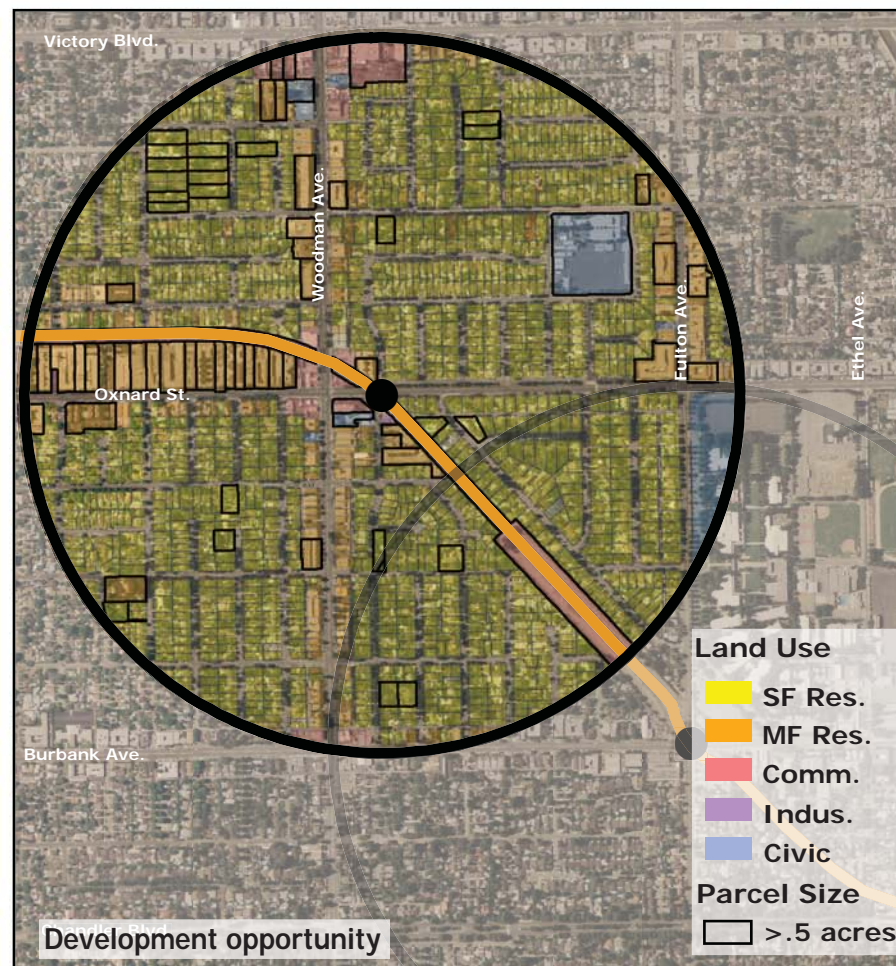
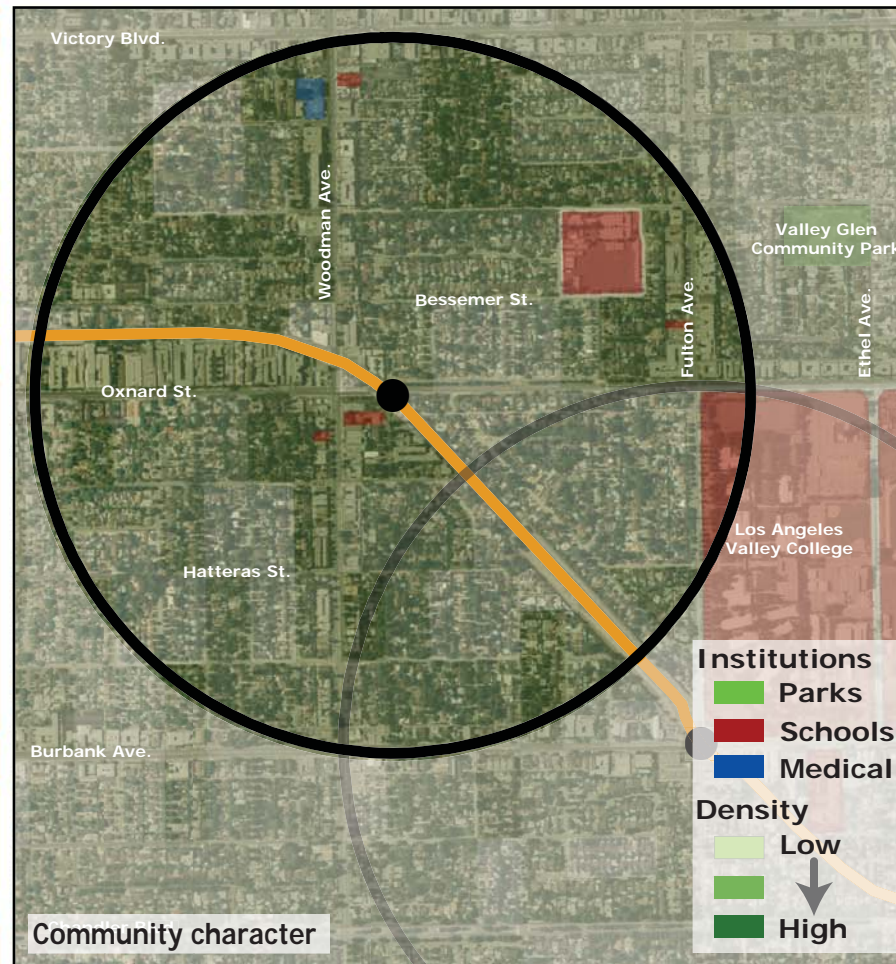
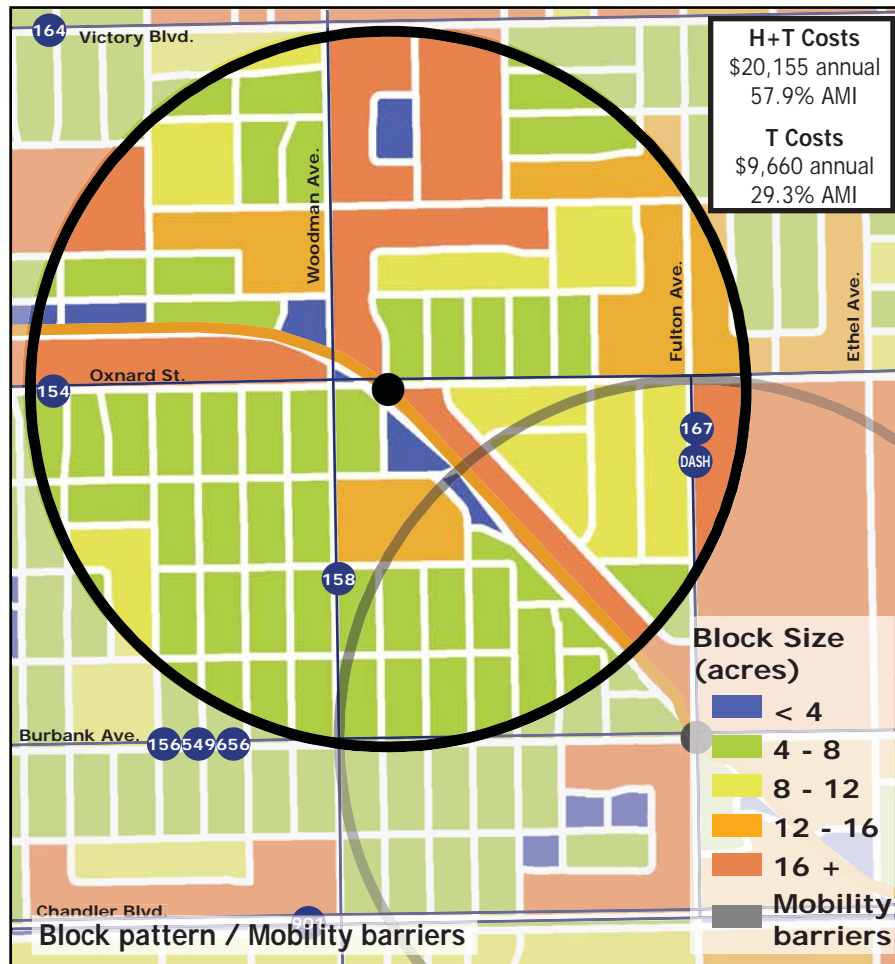
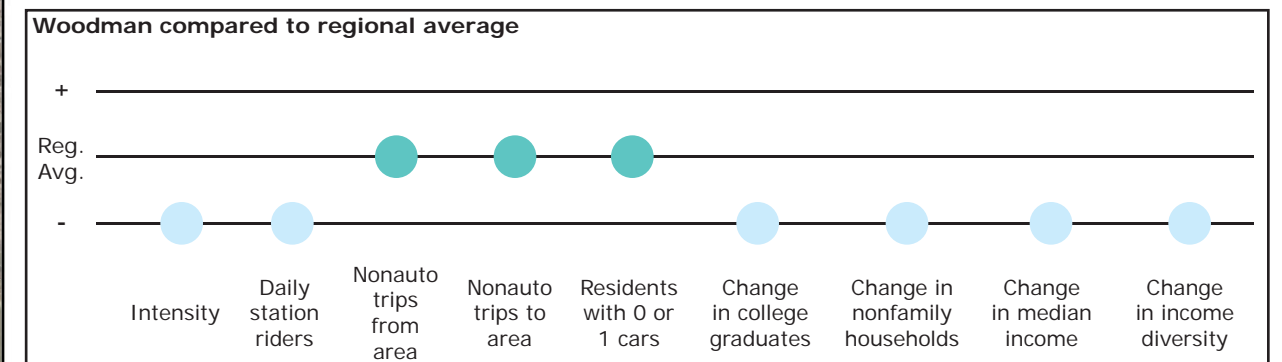


# Los Angeles TOD Typology and Case Study Project

## Woodman - Orange Line BRT

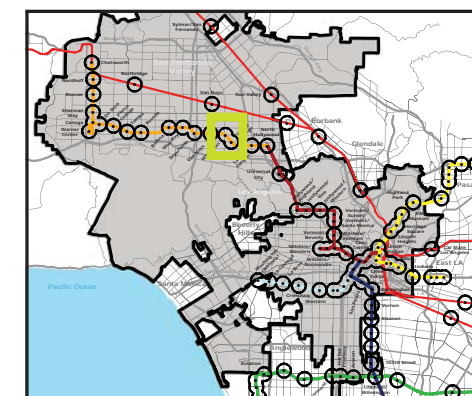
**Neighborhood Type** Suburban Neighborhood  
**Station Type** Street Level, Low corridor ridership  
**Neighborhood Change** Becoming more low income  
**Development Opportunity** Low

| Category                        | Screen                              | Value                 | Reads As       |
|---------------------------------|-------------------------------------|-----------------------|----------------|
| <b>Neighborhood Type (Uses)</b> | Use Mix                             | 0.13 jobs/resident    | Residential    |
|                                 | Intensity                           | 20.74 persons/acre    | Low            |
| <b>Access and Mobility</b>      | Daily station boardings             | 798 riders            | Low            |
|                                 | Mobility barriers                   | none                  | Walkable       |
|                                 | Nonauto work trips from area        | 10.0%                 | Moderate       |
|                                 | Nonauto work trips to area          | 10.9%                 | Moderate       |
|                                 | Residents with 1 or 0 cars          | 49.5%                 | Moderate       |
| <b>Neighborhood Change</b>      | College graduates (1990-2000)       | -1.5%                 | Decrease       |
|                                 | Nonfamily households (1990-2000)    | -17.0%                | Rapid decrease |
|                                 | Median Income (1990-2000)           | -17.8%                | Decrease       |
|                                 | Income diversity (1990-2000)        | -6.2%                 | Decrease       |
|                                 | Affordable Units (2009-2015)        | 39 units, 0% expiring | No loss        |
| <b>Development Opportunity</b>  | Underutilized Land                  | 10.5 acres            | Few, scattered |
|                                 | Avg. commercial & industrial parcel | 0.36                  | Low            |



### Legend

- Freeway
- Station
- Orange Line BRT
- Bus line
- Half-mile radius



October 20, 2009,  
Draft

Data sources: 1990 and 2000 Census SF3 Tables; USDA; City of Los Angeles; LA City Metro Transit Authority; County of Los Angeles Assessor's Office; HUD User; CTOD TOD database.