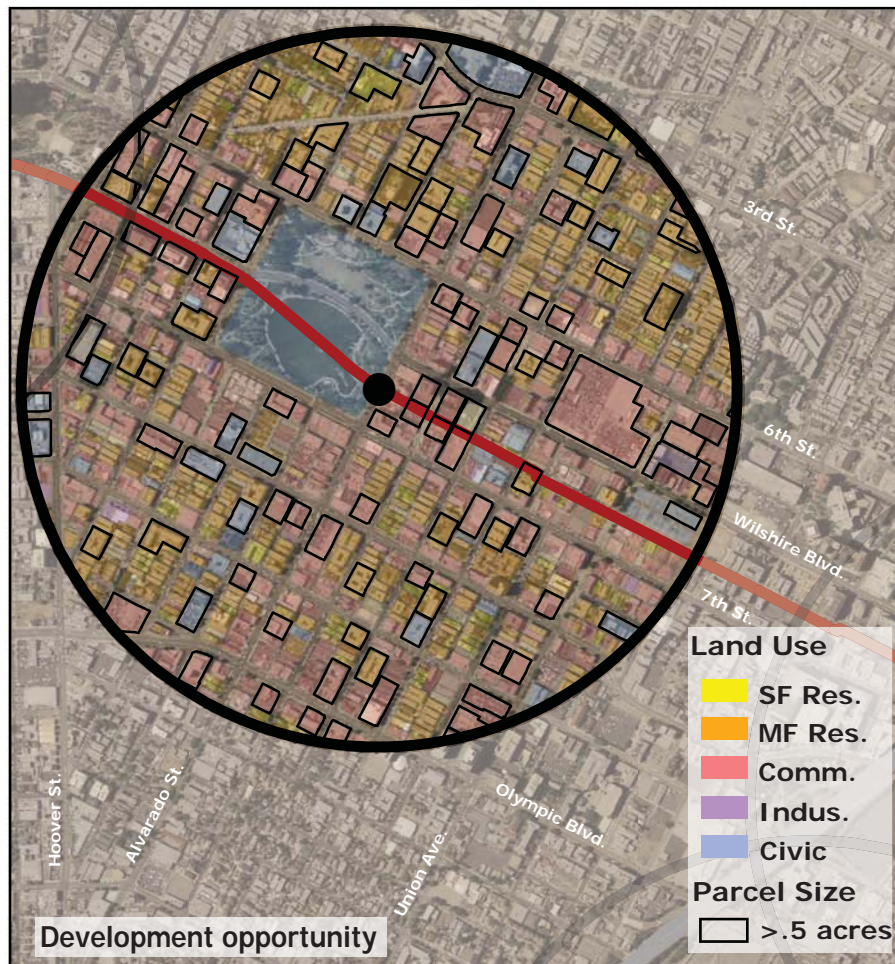
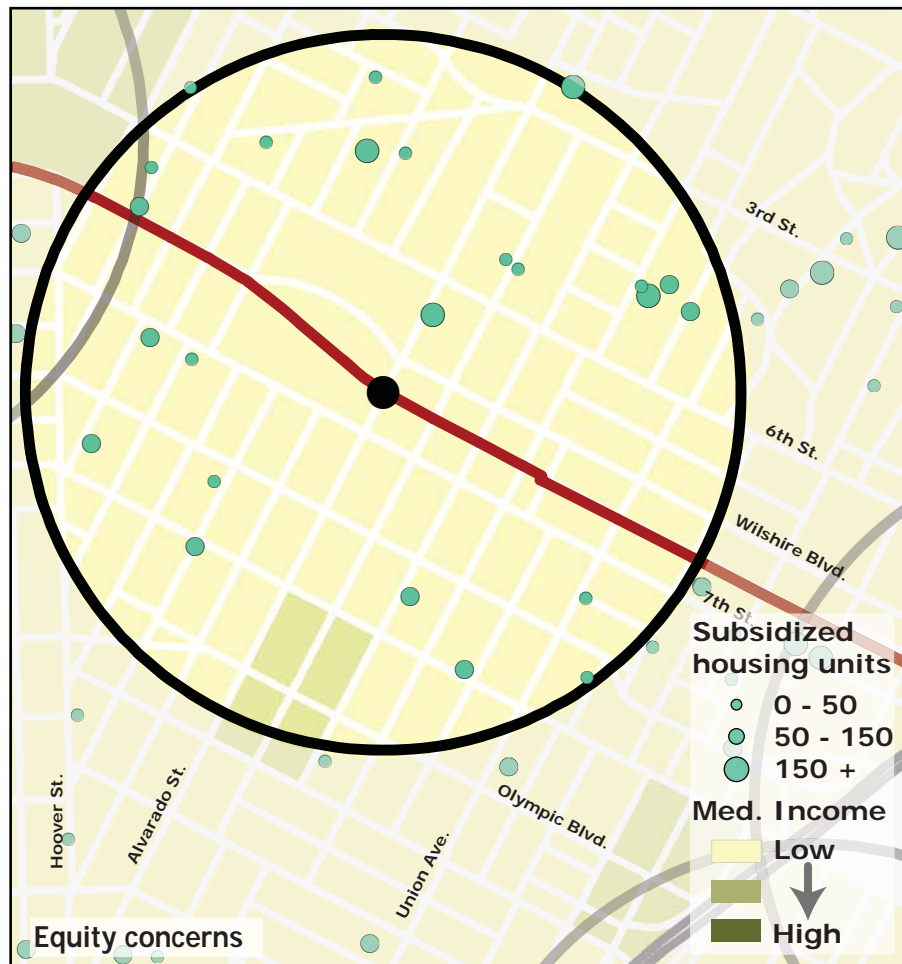
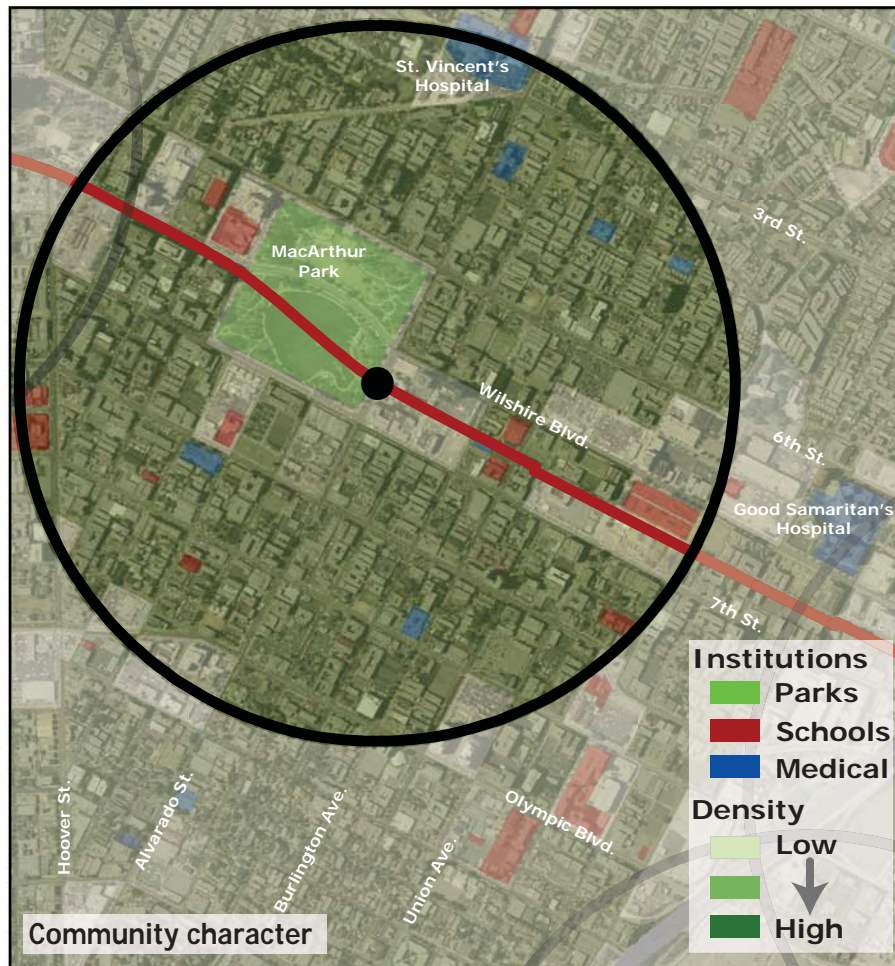
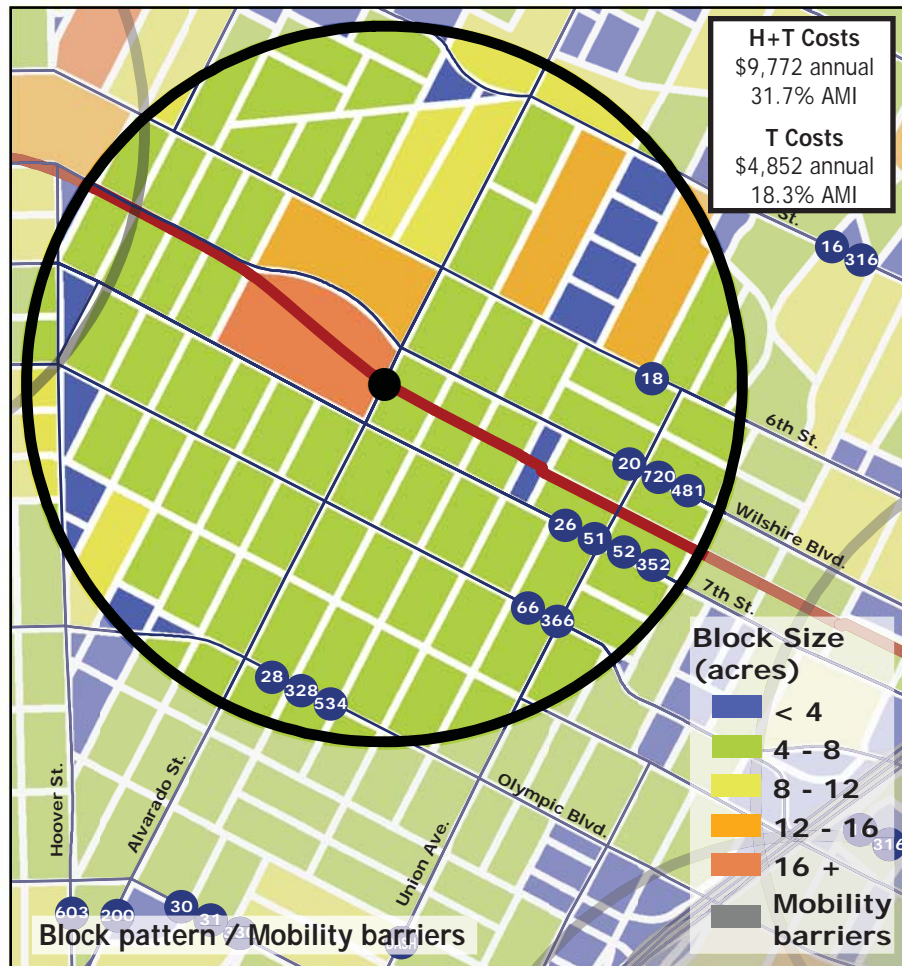
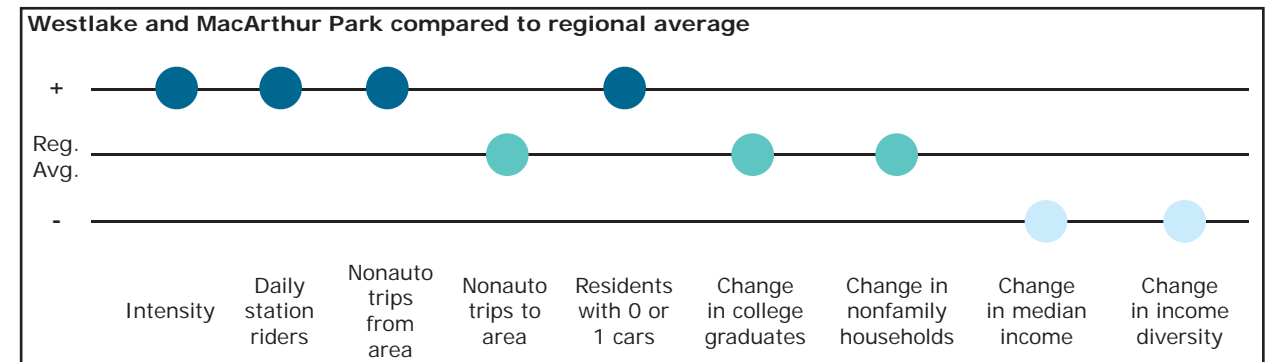


Los Angeles TOD Typology and Case Study Project Westlake and MacArthur Park - Red/Purple Lines

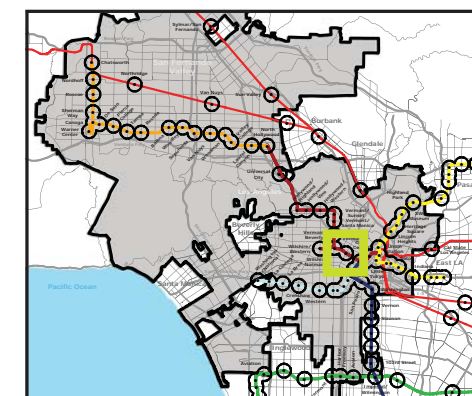
Neighborhood Type Urban Neighborhood
Station Type Underground, Moderate corridor ridership
Neighborhood Change Becoming more low income
Development Opportunity Moderate

Category	Screen	Value	Reads As
Neighborhood Type (Uses)	Use Mix	0.28 jobs/resident	Residential
	Intensity	94.7 persons/acre	High
Access and Mobility	Daily station boardings	8,478 riders	High
	Mobility barriers	none	Walkable
	Nonauto work trips from area	64.2%	High
	Nonauto work trips to area	20.4%	Moderate
	Residents with 1 or 0 cars	90.3%	High
Neighborhood Change	College graduates (1990-2000)	-0.3%	Nominal change
	Nonfamily households (1990-2000)	-0.6%	Nominal change
	Median Income (1990-2000)	-17.8%	Decrease
	Income diversity (1990-2000)	-12.2%	Decrease
	Affordable Units (2009-2015)	618 units, 79% expiring	Moderate loss
Development Opportunity	Underutilized Land	88 acres	Many, small
	Avg. commercial & industrial parcel	0.38 acres	Low



Legend

- Freeway
- Station
- Subway
- Bus line
- Half-mile radius



October 20, 2009,
Draft

Data sources: 1990 and 2000 Census SF3 Tables; USDA; City of Los Angeles; LA City Metro Transit Authority; County of Los Angeles Assessor's Office; HUD User; CTOD TOD database.