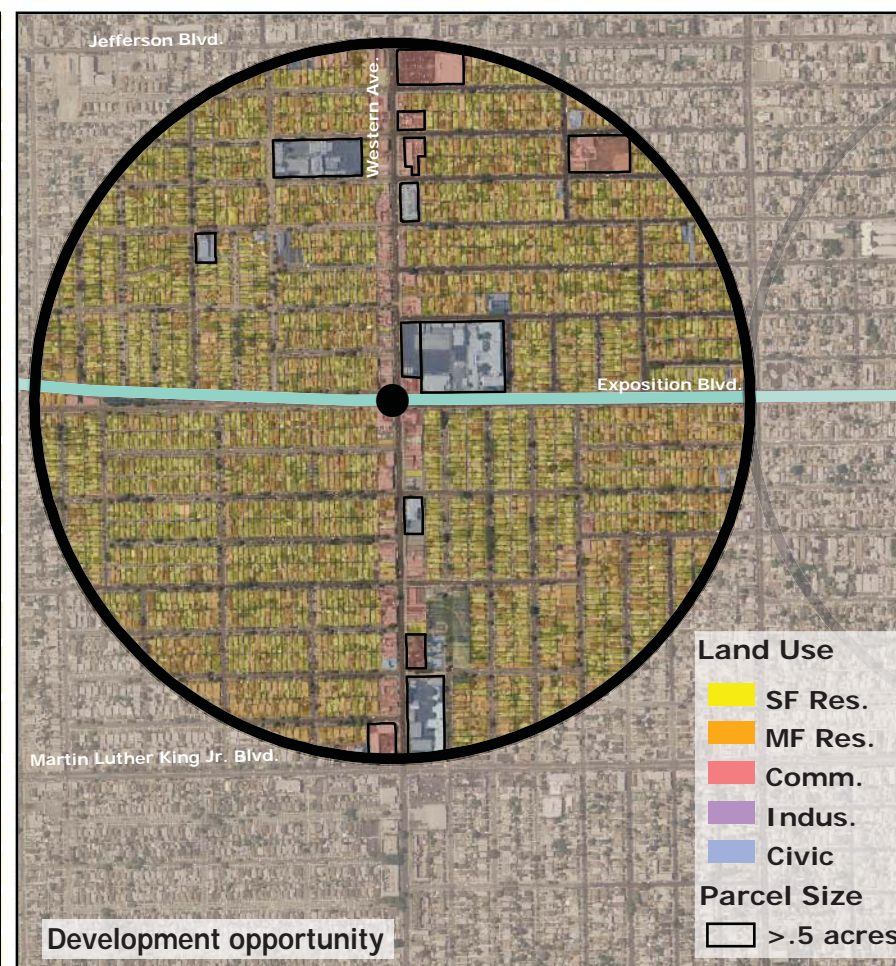
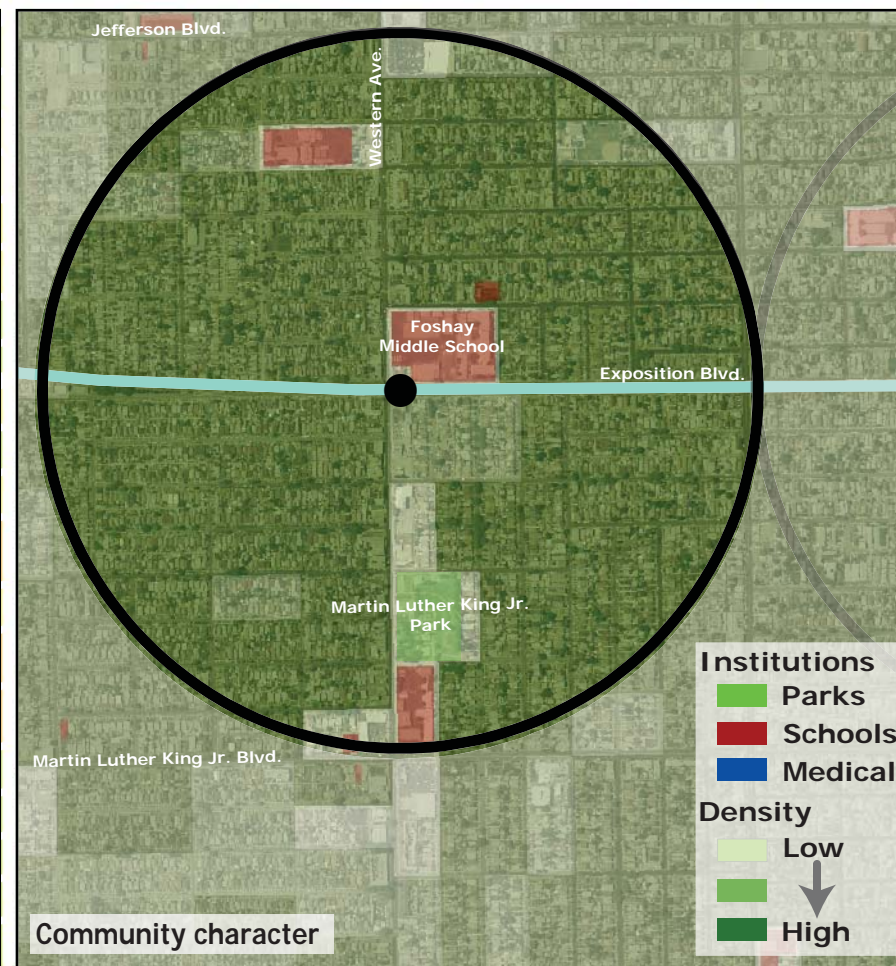
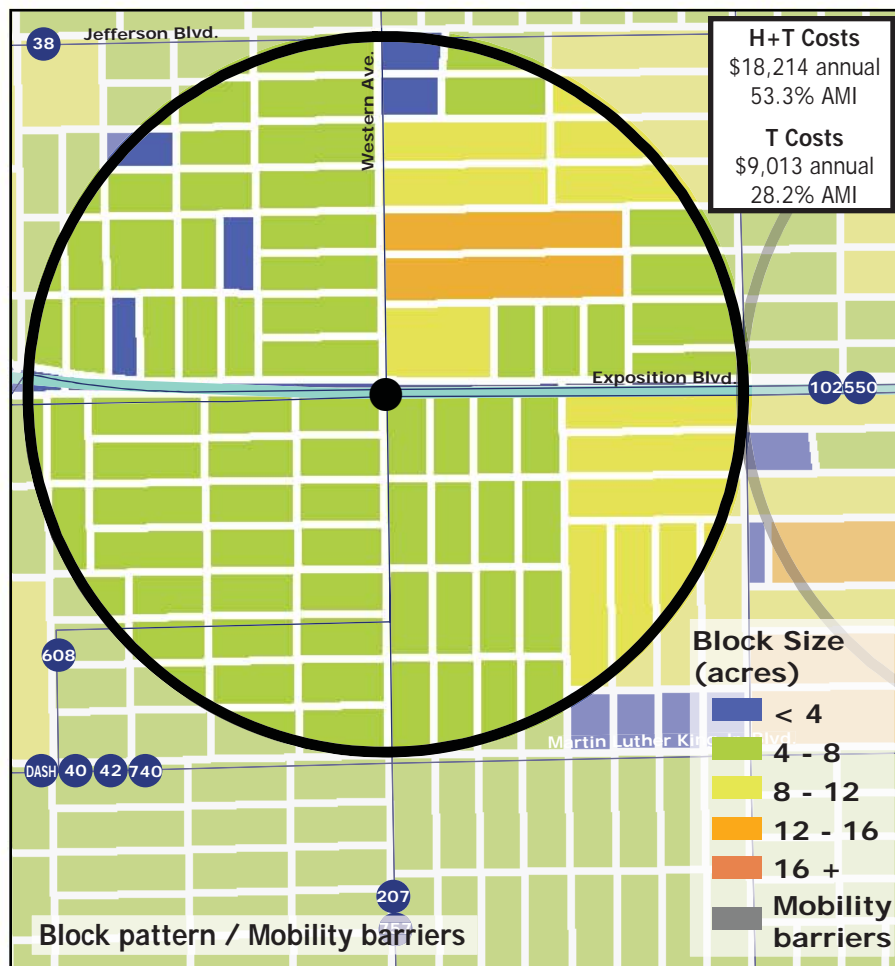
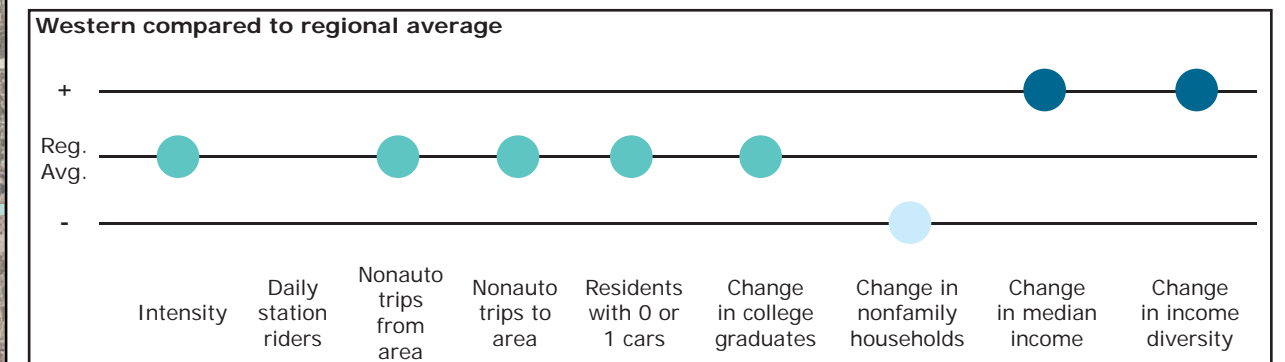


Los Angeles TOD Typology and Case Study Project

Western - Planned Expo Line

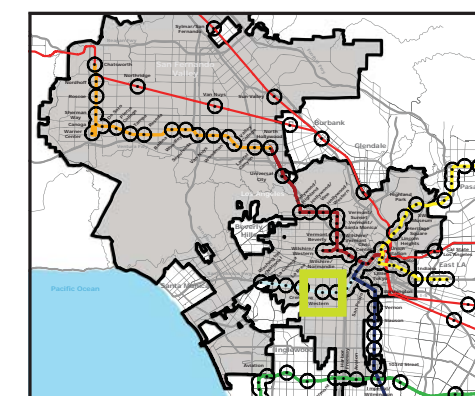
Neighborhood Type Transit Neighborhood
Station Type Street level
Neighborhood Change Becoming more high income
Development Opportunity Low

| Category | Screen | Value | Reads As |
|---------------------------------|-------------------------------------|------------------------|----------------|
| Neighborhood Type (Uses) | Use Mix | 0.02 jobs/resident | Residential |
| | Intensity | 27.65 persons/acre | Moderate |
| Access and Mobility | Daily station boardings | n/a | |
| | Mobility barriers | none | Walkable |
| | Nonauto work trips from area | 19.0% | Moderate |
| | Nonauto work trips to area | 17.9% | Moderate |
| Neighborhood Change | Residents with 1 or 0 cars | 62.8% | Moderate |
| | College graduates (1990-2000) | +12.2% | Nominal change |
| | Nonfamily households (1990-2000) | -15.2% | Rapid Decrease |
| | Median Income (1990-2000) | +20.6% | Rapid Increase |
| | Income diversity (1990-2000) | +5.5% | Rapid Increase |
| Development Opportunity | Affordable Units (2009-2015) | 93 units, 37% expiring | Moderate loss |
| | Underutilized Land | 19.2 acres | Few, clustered |
| | Avg. commercial & industrial parcel | 0.24 acres | Low |



Legend

- Freeway
- Transit
- Station
- Planned Expo Line
- Bus line
- Half-mile radius



November 5, 2009,
Draft