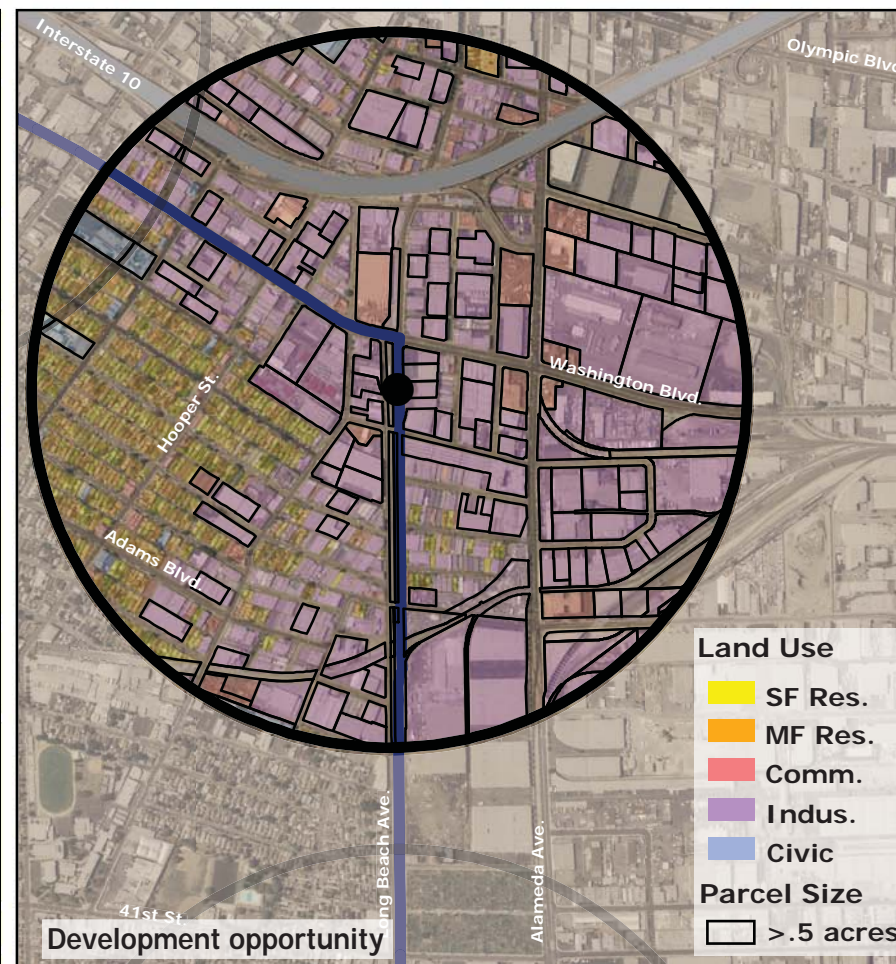
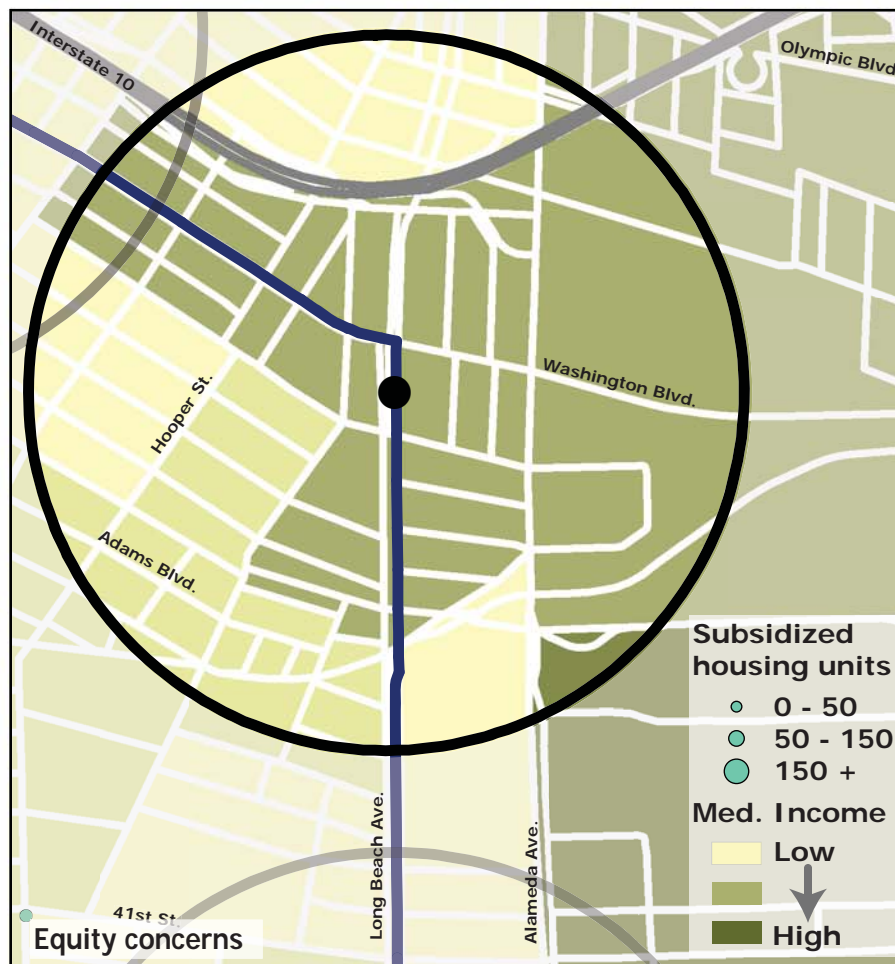
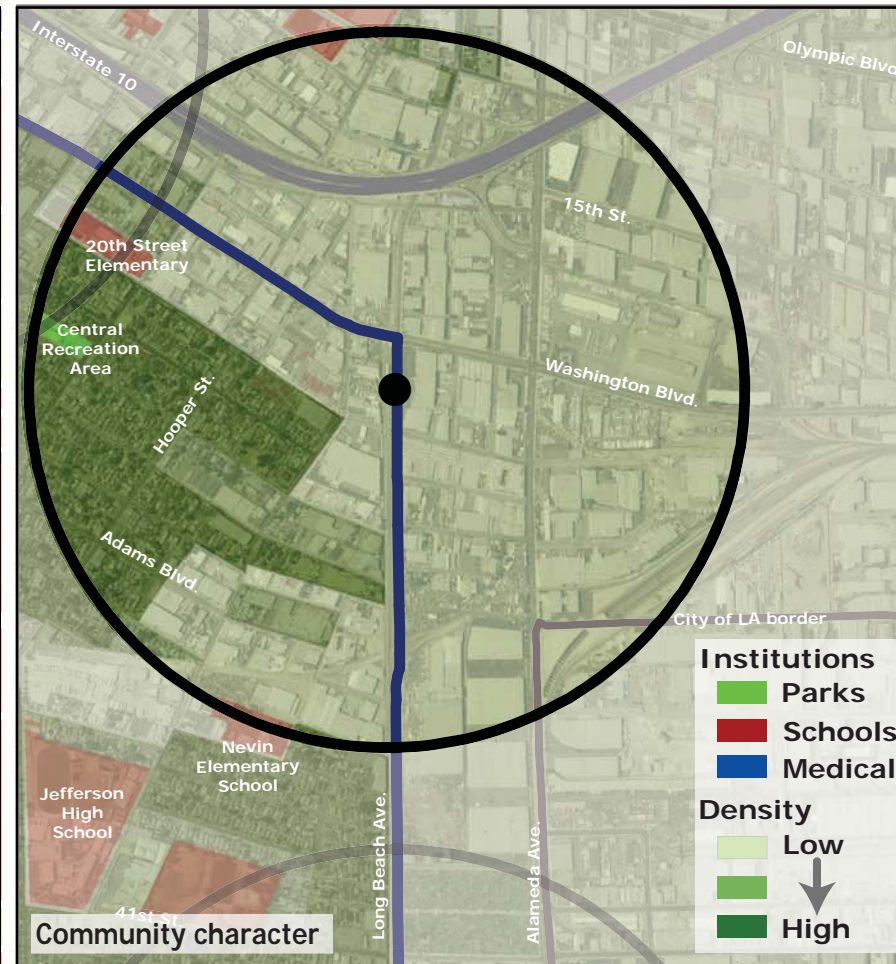
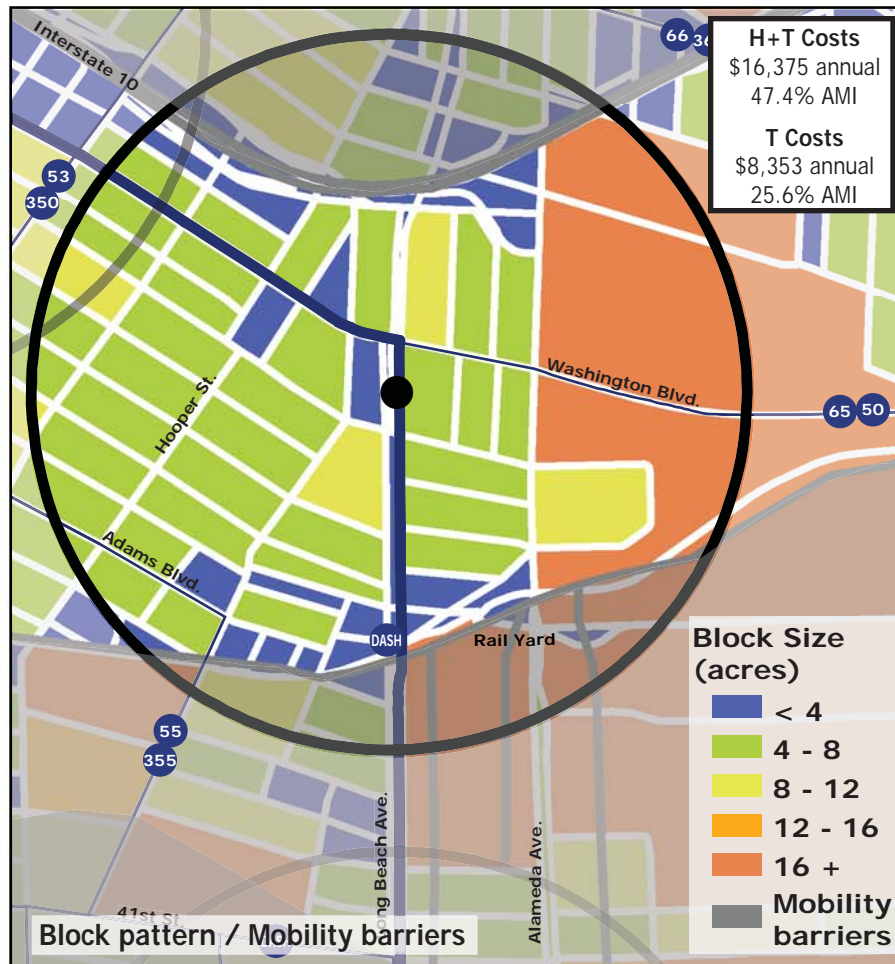
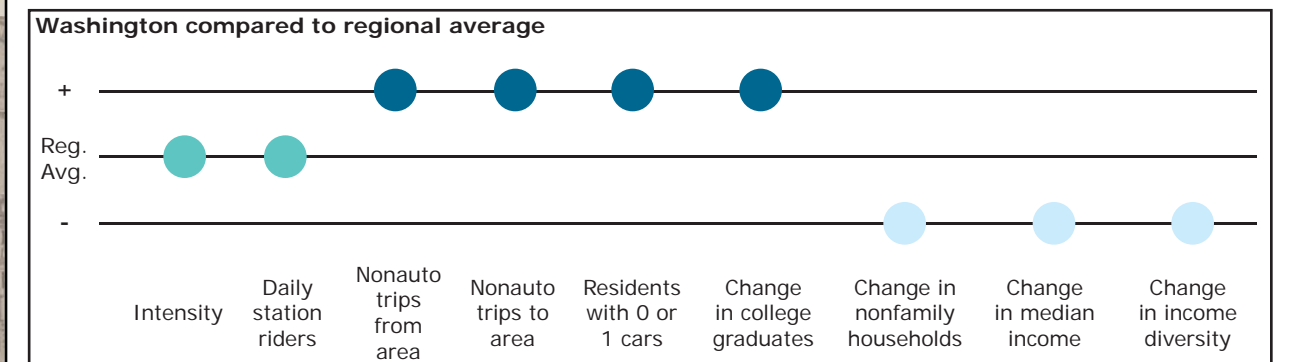


Los Angeles TOD Typology and Case Study Project

Washington - Blue Line

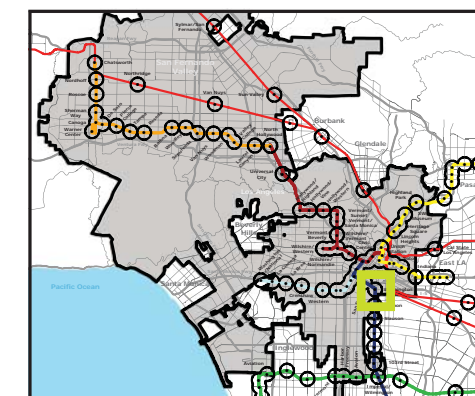
Neighborhood Type Business District
Station Type Street level, Low corridor ridership
Neighborhood Change Potential for gentrification
Development Opportunity High-moderate

Category	Screen	Value	Reads As
Neighborhood Type (Uses)	Use Mix	2.16 jobs/resident	Employment Area
	Intensity	27.1 persons/acre	Moderate
Access and Mobility	Daily station boardings	1,609 riders	Moderate
	Mobility barriers	freeway; railroads	Semi-walkable
	Nonauto work trips from area	33.2%	High
	Nonauto work trips to area	25.9%	High
	Residents with 1 or 0 cars	66.4%	High
Neighborhood Change	College graduates (1990-2000)	+30.9%	Rapid increase
	Nonfamily households (1990-2000)	-30.8%	Rapid decrease
	Median Income (1990-2000)	-13.6%	Decrease
	Income diversity (1990-2000)	-7.9%	Decrease
	Affordable Units (2009-2015)	0 units, 0% expiring	No change
Development Opportunity	Underutilized Land	151 acres	Many, scattered
	Avg. commercial & industrial parcel	0.58 acres	Moderate



Legend

- Freeway
- Station
- Blue Line
- Bus line
- Half-mile radius



October 20, 2009,
Draft

Data sources: 1990 and 2000 Census SF3 Tables; USDA; City of Los Angeles; LA City Metro Transit Authority; County of Los Angeles Assessor's Office; HUD User; CTOD TOD database.

