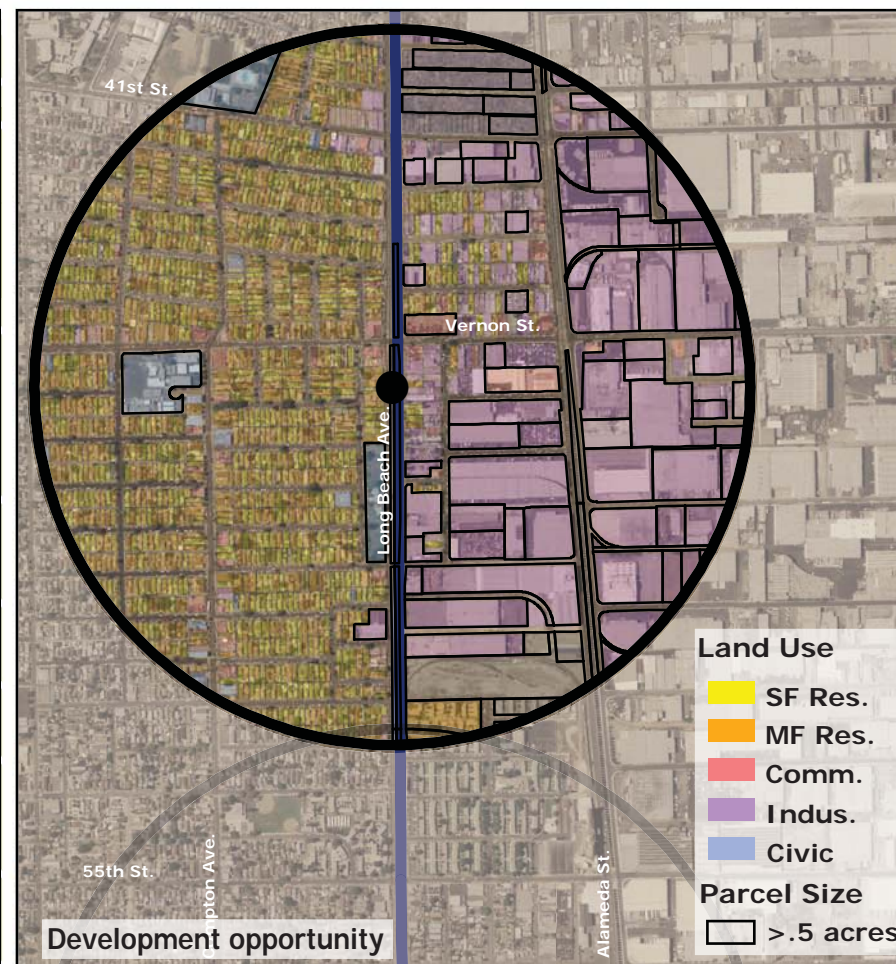
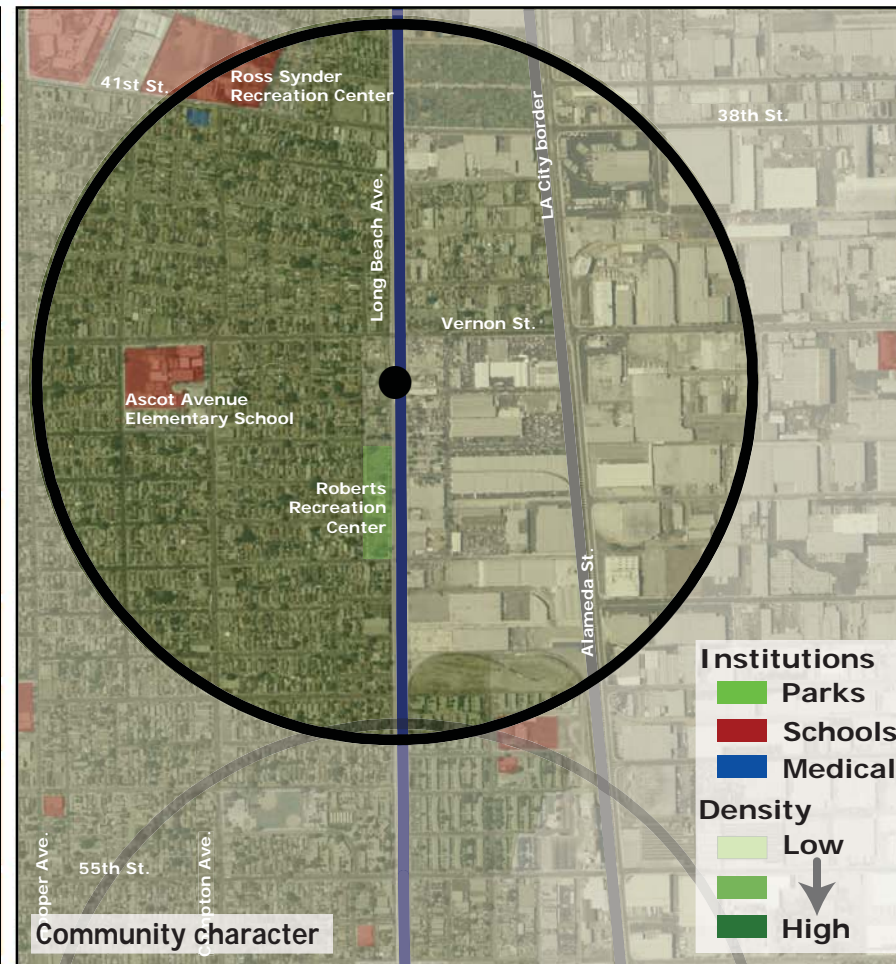
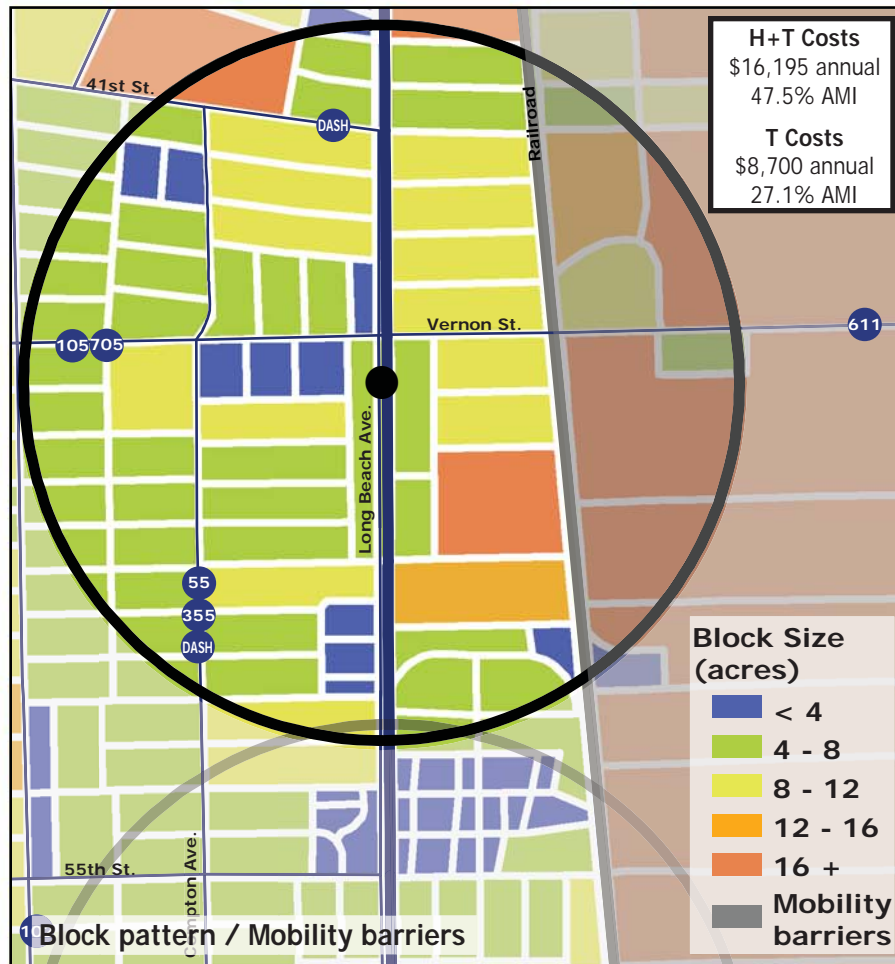
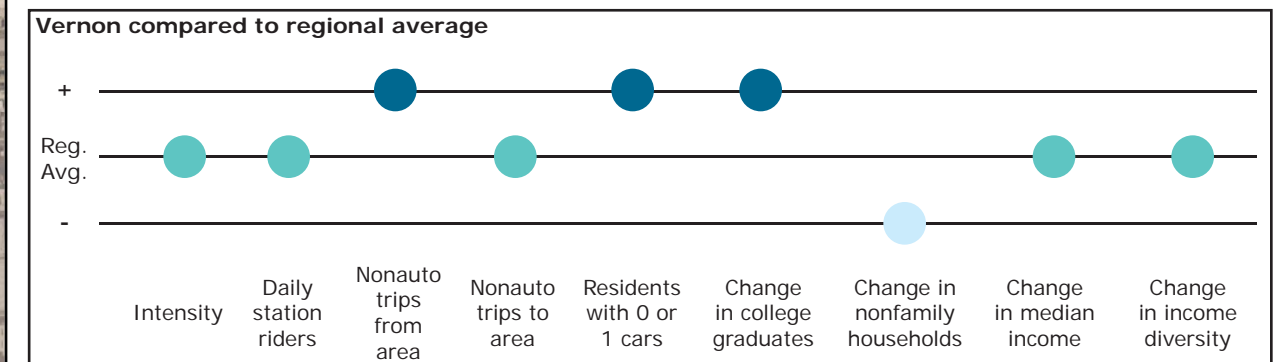


Los Angeles TOD Typology and Case Study Project

Vernon - Blue Line

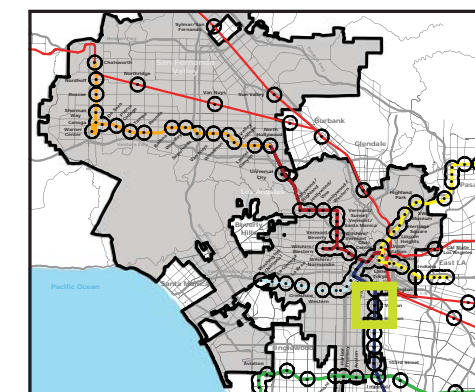
Neighborhood Type Transit Neighborhood
Station Type Street level, Moderate corridor ridership
Neighborhood Change Potential for gentrification
Development Opportunity High-moderate

Category	Screen	Value	Reads As
Neighborhood Type (Uses)	Use Mix	0.35 jobs/resident	Residential
	Intensity	29.3 persons/acre	Moderate
Access and Mobility	Daily station boardings	2,708 riders	Moderate
	Mobility barriers	railroad, industrial	Auto-oriented
	Nonauto work trips from area	28.0%	High
	Nonauto work trips to area	18.3%	Moderate
	Residents with 1 or 0 cars	68.5%	High
Neighborhood Change	College graduates (1990-2000)	+284.1%	Rapid increase
	Nonfamily households (1990-2000)	-43.5%	Rapid decrease
	Median Income (1990-2000)	-2.5%	Nominal change
	Income diversity (1990-2000)	+1.1%	Nominal change
	Affordable Units (2009-2015)	0 units, 0% expiring	No change
Development Opportunity	Underutilized Land	99.7 acres	Many, clustered
	Avg. commercial & industrial parcel	0.92 acres	Moderate



Legend

- Freeway
- Station
- Blue Line
- Bus line
- Half-mile radius



October 20, 2009,
Draft

Data sources: 1990 and 2000 Census SF3 Tables; USDA; City of Los Angeles; LA City Metro Transit Authority; County of Los Angeles Assessor's Office; HUD User; CTOD TOD database.

