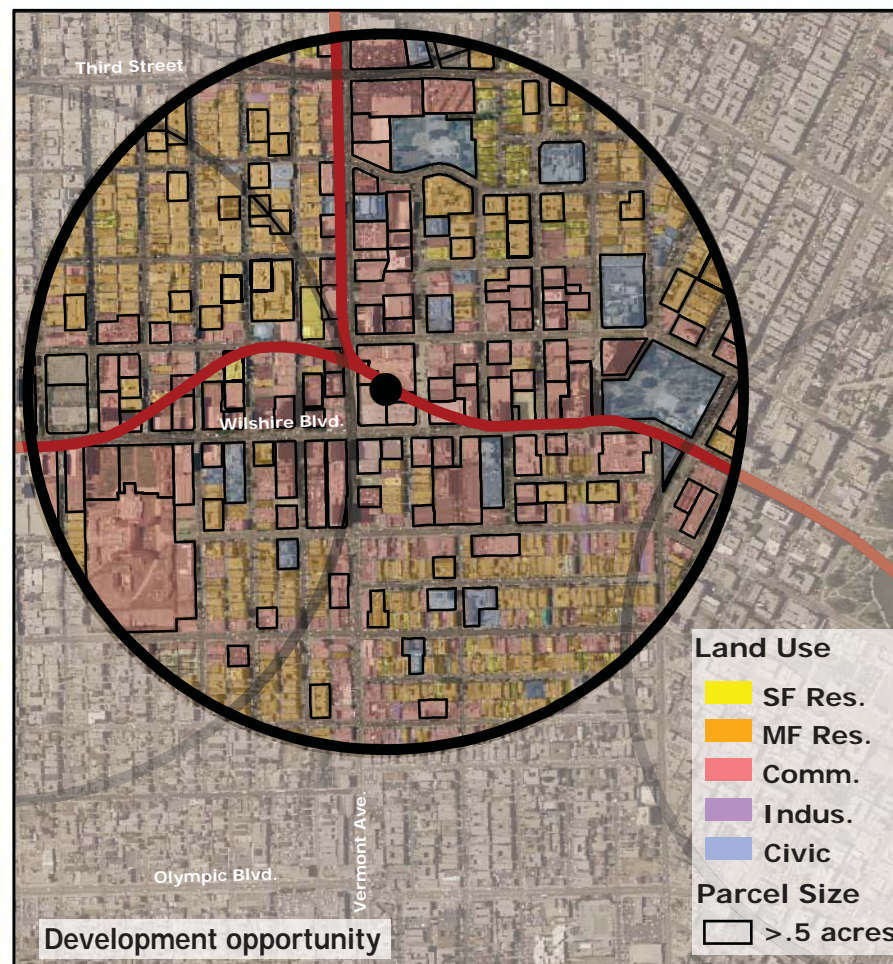
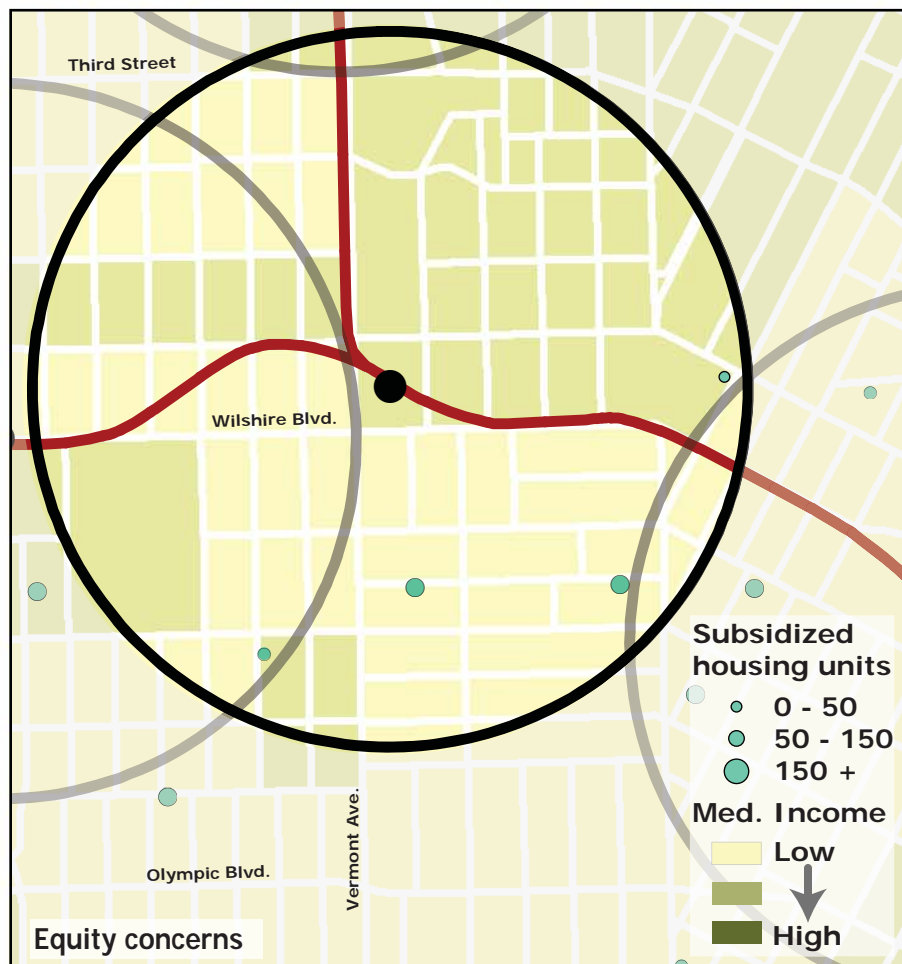
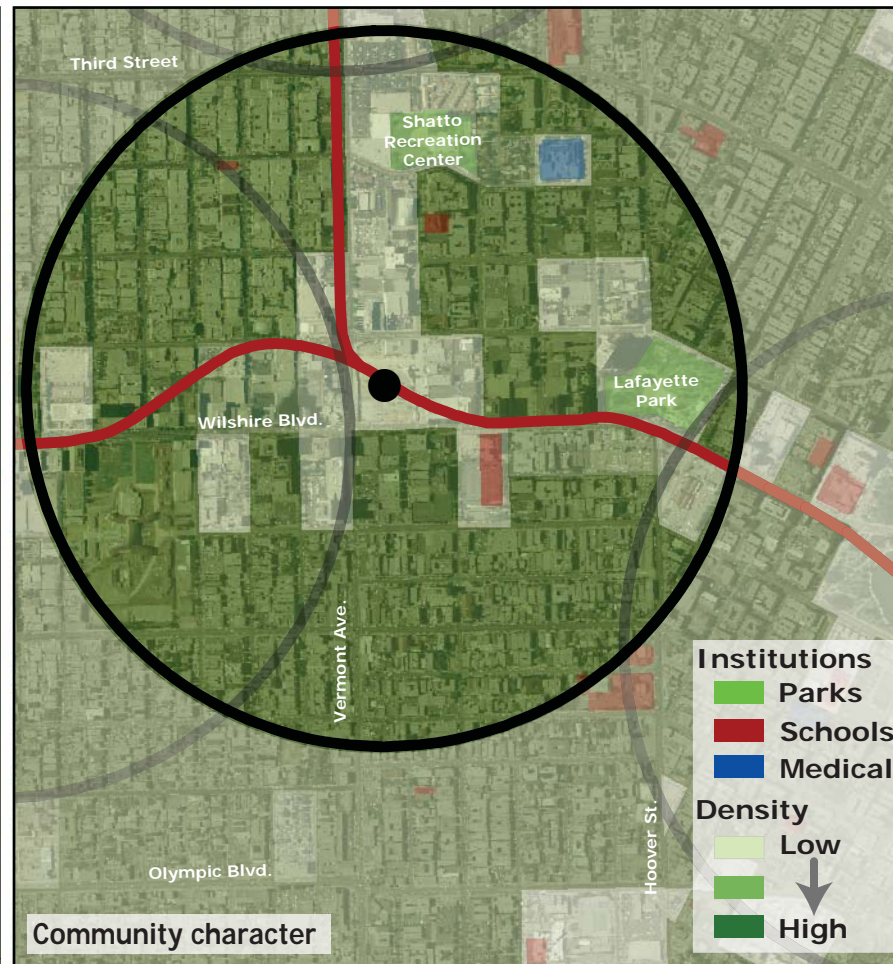
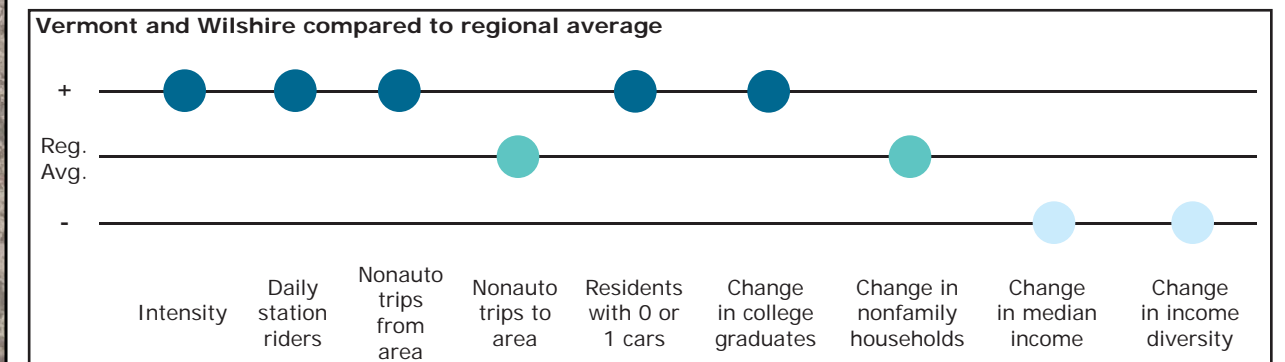


Los Angeles TOD Typology and Case Study Project Vermont and Wilshire - Red/Purple Lines

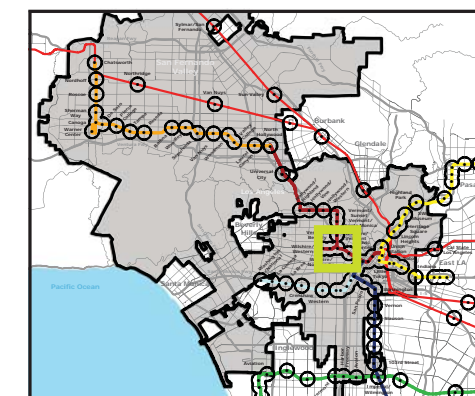
Neighborhood Type Urban Center
Station Type Underground, High corridor ridership
Neighborhood Change Potential for gentrification
Development Opportunity High-moderate

Category	Screen	Value	Reads As
Neighborhood Type (Uses)	Use Mix	0.63 jobs/resident	Mixed-Use
	Intensity	109.7 persons/acre	High
Access and Mobility	Daily station boardings	10,140 riders	High
	Mobility barriers	none	Walkable
	Nonauto work trips from area	36.9%	High
	Nonauto work trips to area	14.4%	Moderate
	Residents with 1 or 0 cars	82%	High
Neighborhood Change	College graduates (1990-2000)	+32.7%	Rapid increase
	Nonfamily households (1990-2000)	-2.7%	Nominal Change
	Median Income (1990-2000)	-11.8%	Decrease
	Income diversity (1990-2000)	-7.1%	Decrease
	Affordable Units (2009-2015)	331 units, 84% expiring	High loss
Development Opportunity	Underutilized Land	98.9 acres	Many, clustered
	Avg. commercial & industrial parcel	0.67 acres	Moderate



Legend

- Freeway
- Station
- Subway
- Bus line
- Half-mile radius



November 5, 2009,
Draft