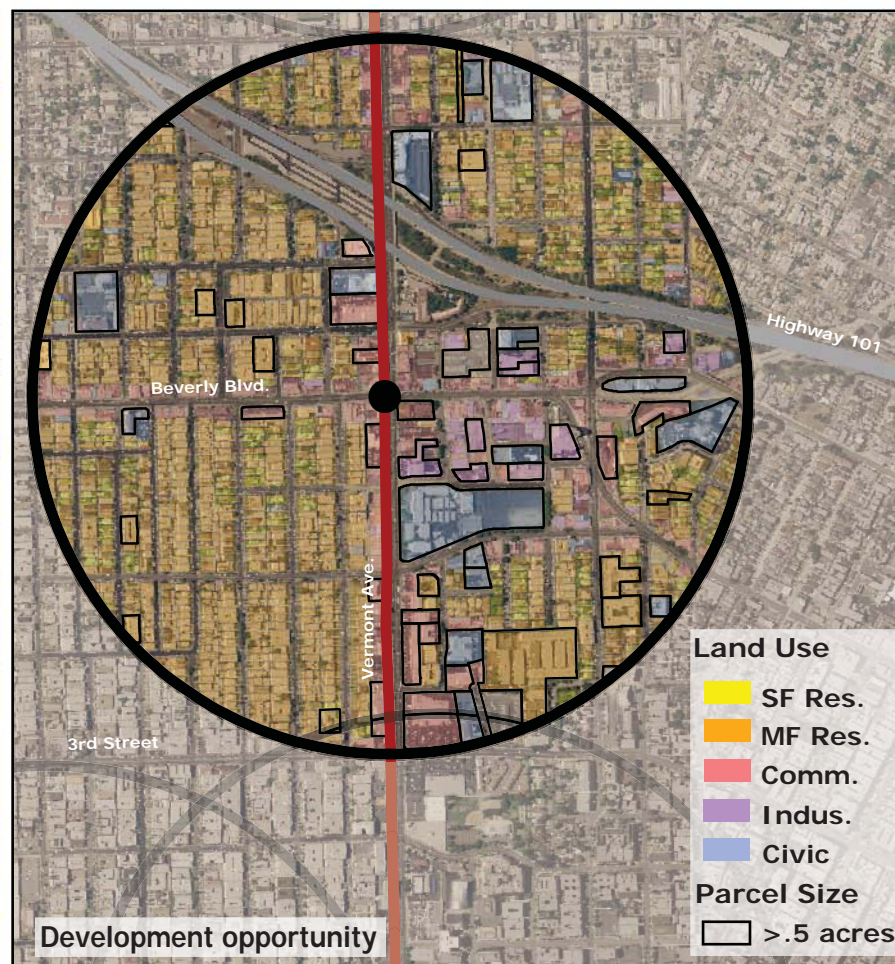
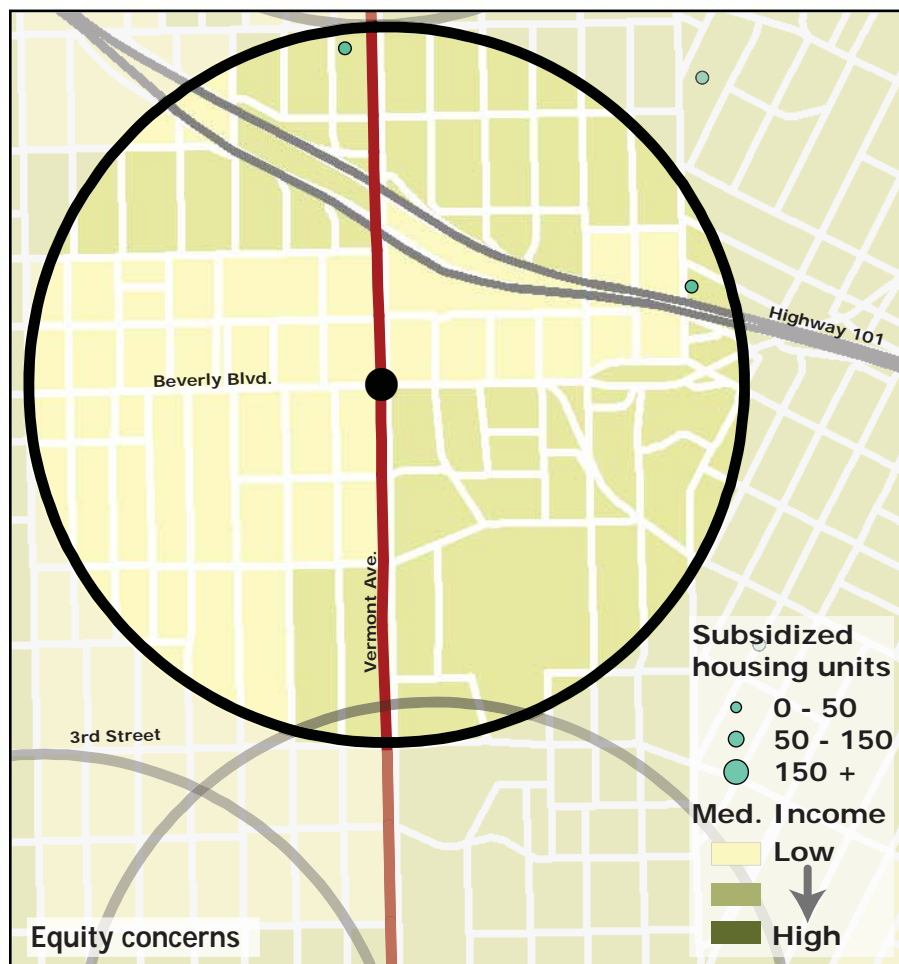
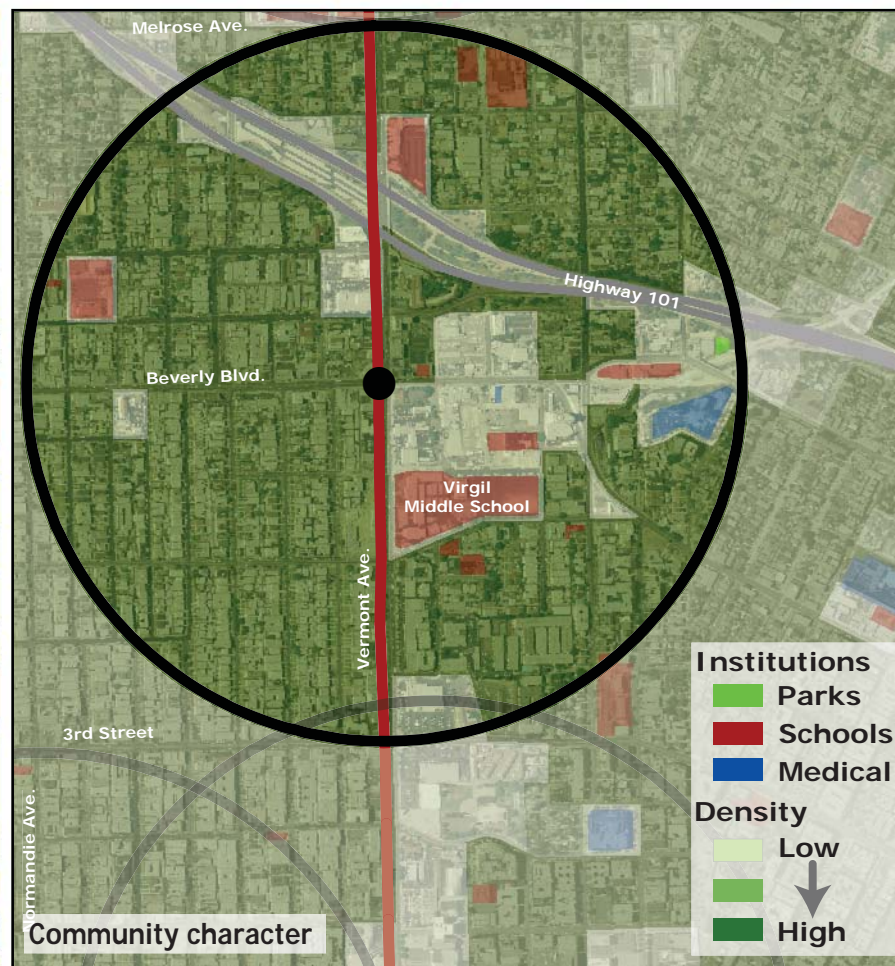
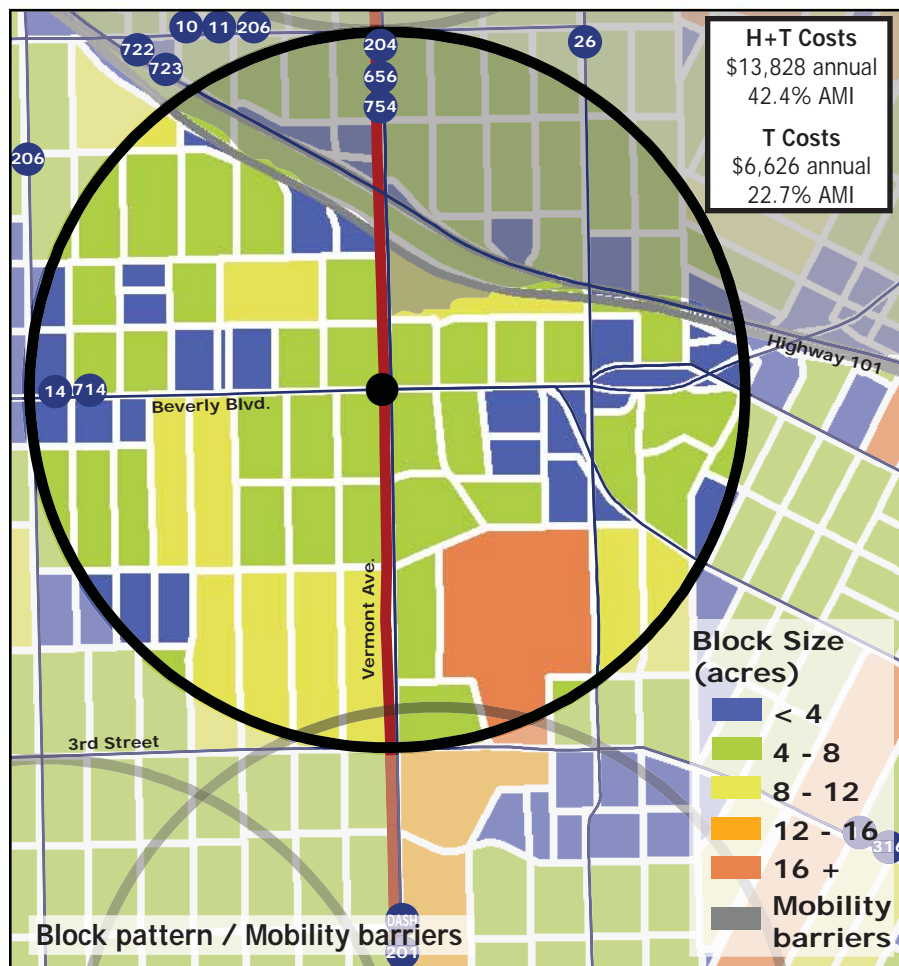
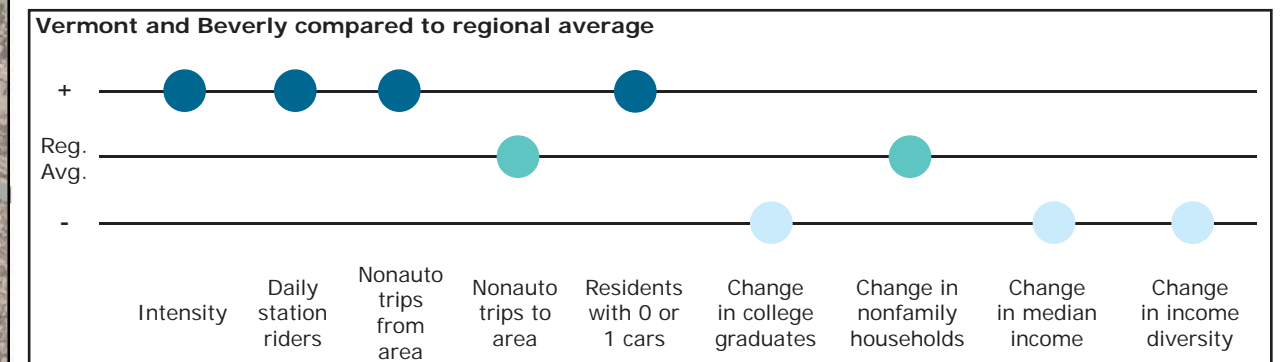


Los Angeles TOD Typology and Case Study Project

Vermont and Beverly - Red Line

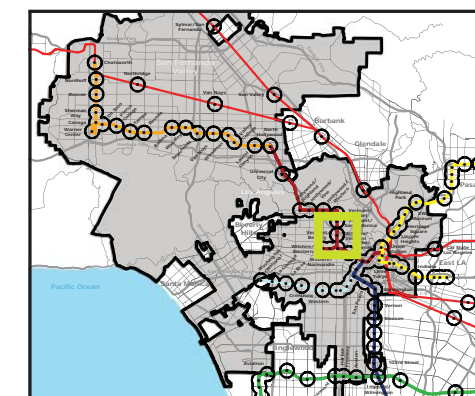
Neighborhood Type Urban Neighborhood
Station Type Underground, Low corridor ridership
Neighborhood Change Becoming more Low Income
Development Opportunity Low-Moderate

Category	Screen	Value	Reads As
Neighborhood Type (Uses)	Use Mix	0.11 jobs/resident	Residential
	Intensity	56.91 persons/acre	High
Access and Mobility	Daily station boardings	8,516 riders	High
	Mobility barriers	freeway proximity	Semi-walkable
	Nonauto work trips from area	33.0%	High
	Nonauto work trips to area	19.5%	Moderate
	Residents with 1 or 0 cars	75%	High
Neighborhood Change	College graduates (1990-2000)	-12.4%	Rapid decrease
	Nonfamily households (1990-2000)	-1.9%	Nominal Change
	Median Income (1990-2000)	-6.0%	Decrease
	Income diversity (1990-2000)	-8.5%	Decrease
	Affordable Units (2009-2015)	53 units, 45% expiring	Moderate loss
Development Opportunity	Underutilized Land	52.8 acres	Many, clustered
	Avg. commercial & industrial parcel	0.30 acres	Low



Legend

- Freeway
- Station
- Subway
- Bus line
- Half-mile radius



November 5, 2009,
Draft