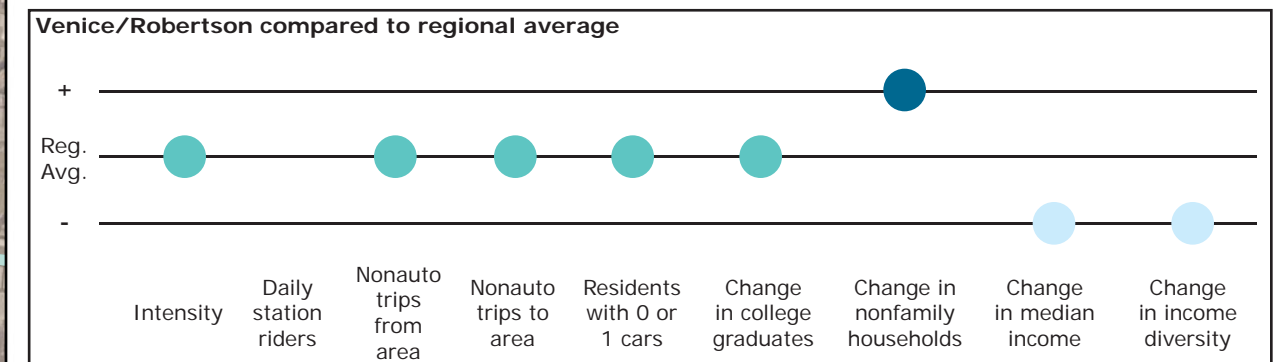
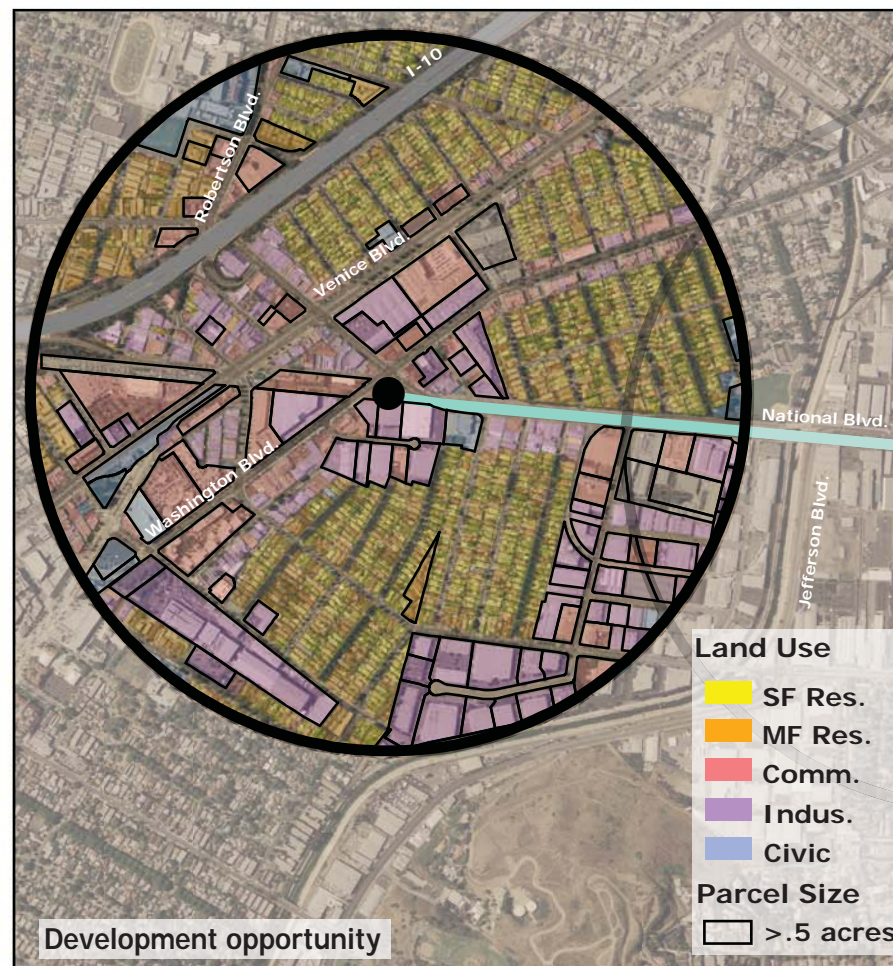
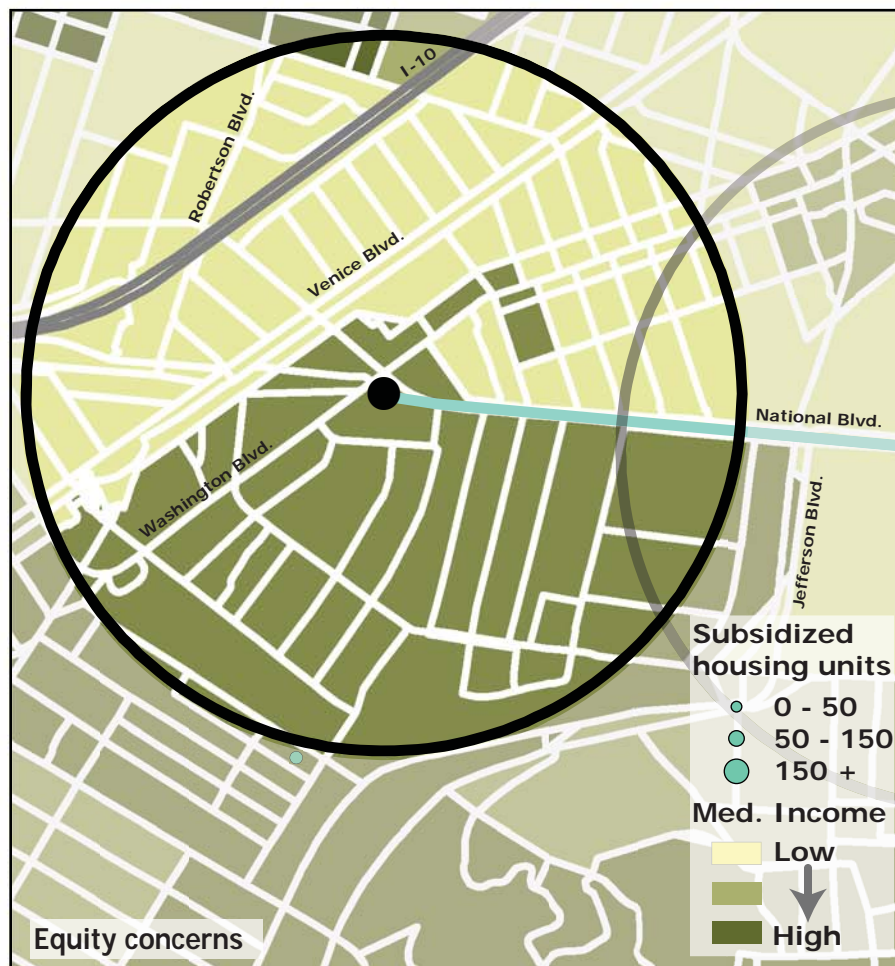
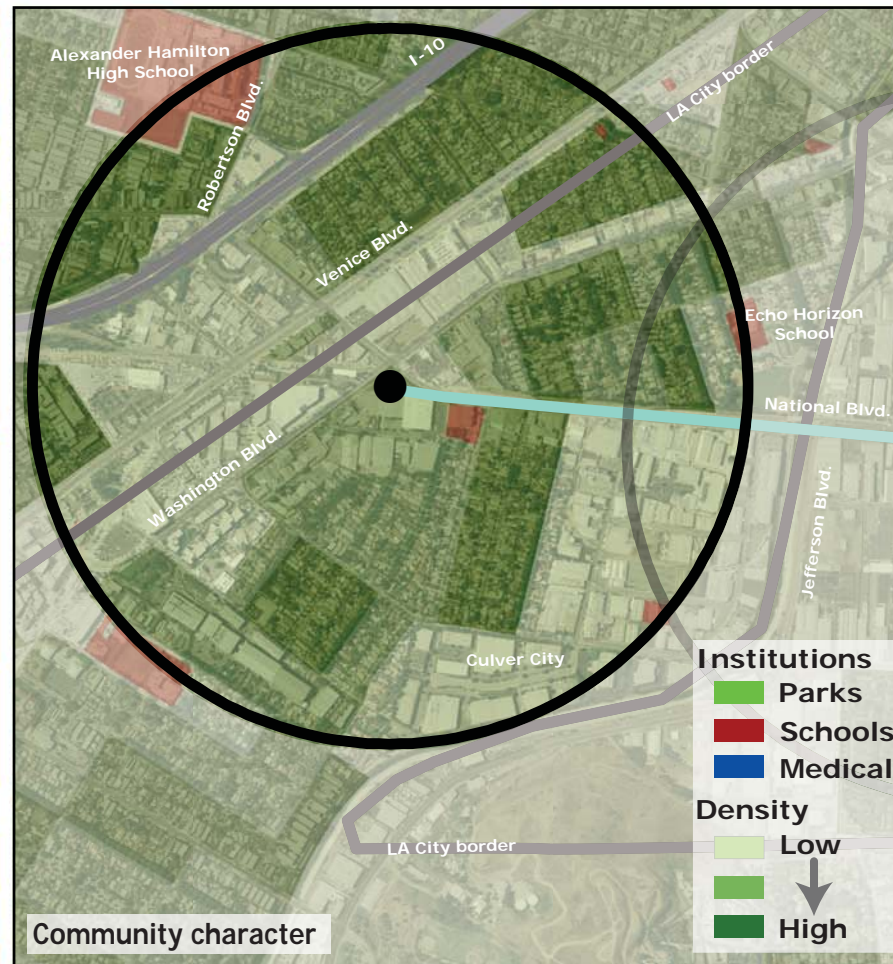
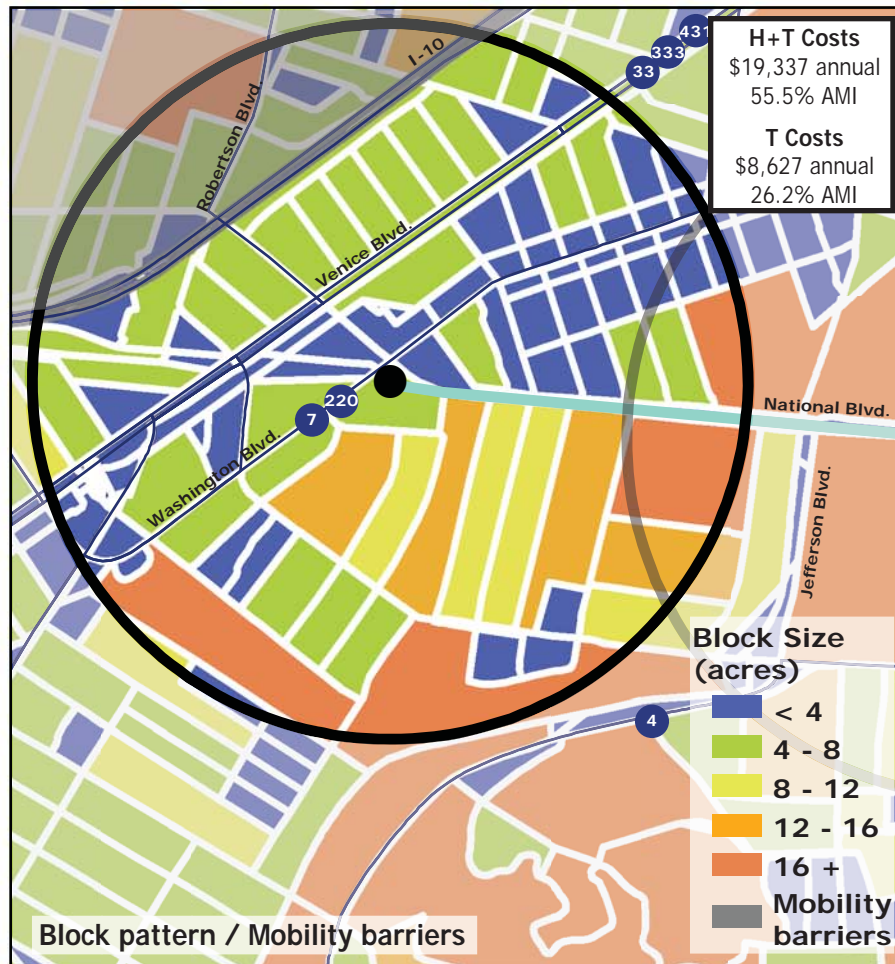


Los Angeles TOD Typology and Case Study Project

Venice/Robertson - Expo Line

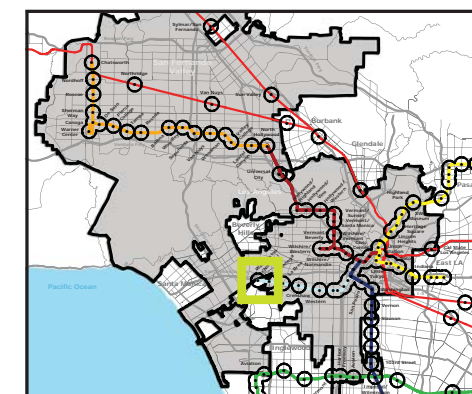
Neighborhood Type Mixed-Use Center
Station Type Street level
Neighborhood Change Becoming more low income
Development Opportunity Low-moderate

Category	Screen	Value	Reads As
Neighborhood Type (Uses)	Use Mix	0.55 jobs/resident	Mixed-Use
	Intensity	28.2 persons/acre	Moderate
Access and Mobility	Daily station boardings	n/a	
	Mobility barriers	block size; freeway	Semi-walkable
	Nonauto work trips from area	11.9%	Moderate
	Nonauto work trips to area	9.4%	Moderate
Neighborhood Change	Residents with 1 or 0 cars	53.7%	Moderate
	College graduates (1990-2000)	+13.8%	Nominal change
	Nonfamily households (1990-2000)	+2.6%	Increase
	Median Income (1990-2000)	-20.1%	Decrease
	Income diversity (1990-2000)	-6.8%	Decrease
	Affordable Units (2009-2015)	0 units, 0% expiring	No change
Development Opportunity	Underutilized Land	104 acres	Small, clustered
	Avg. commercial & industrial parcel	0.43 acres	Low



Legend

- Freeway
- Transit
- Station
- Planned Expo Line
- Bus line
- Half-mile radius



October 20, 2009,
Draft

Data sources: 1990 and 2000 Census SF3 Tables; USDA; City of Los Angeles; LA City Metro Transit Authority; County of Los Angeles Assessor's Office; HUD User; CTOD TOD database.

