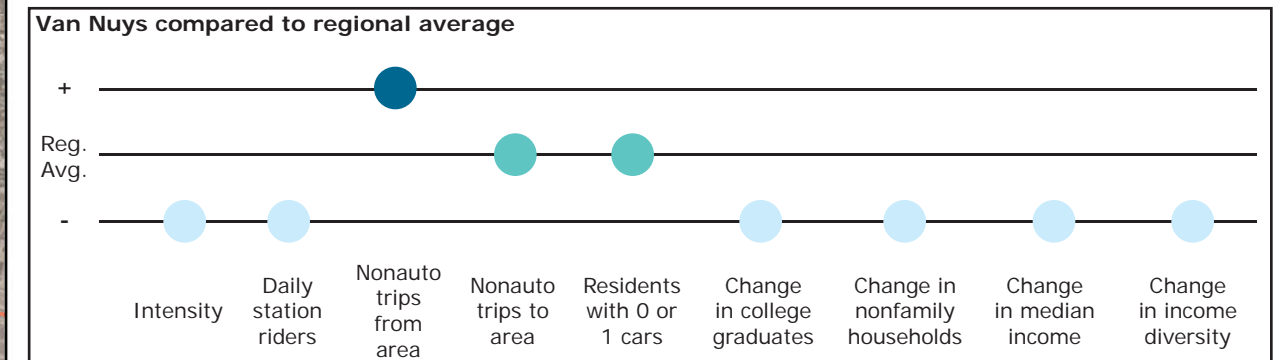
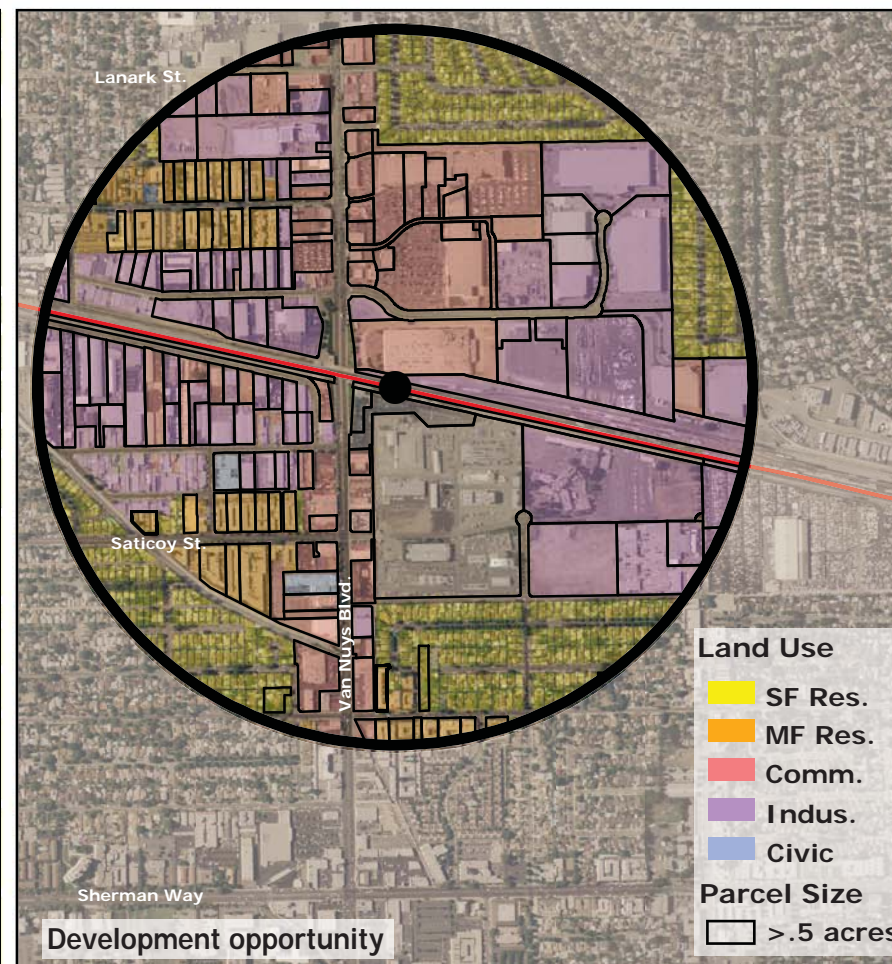
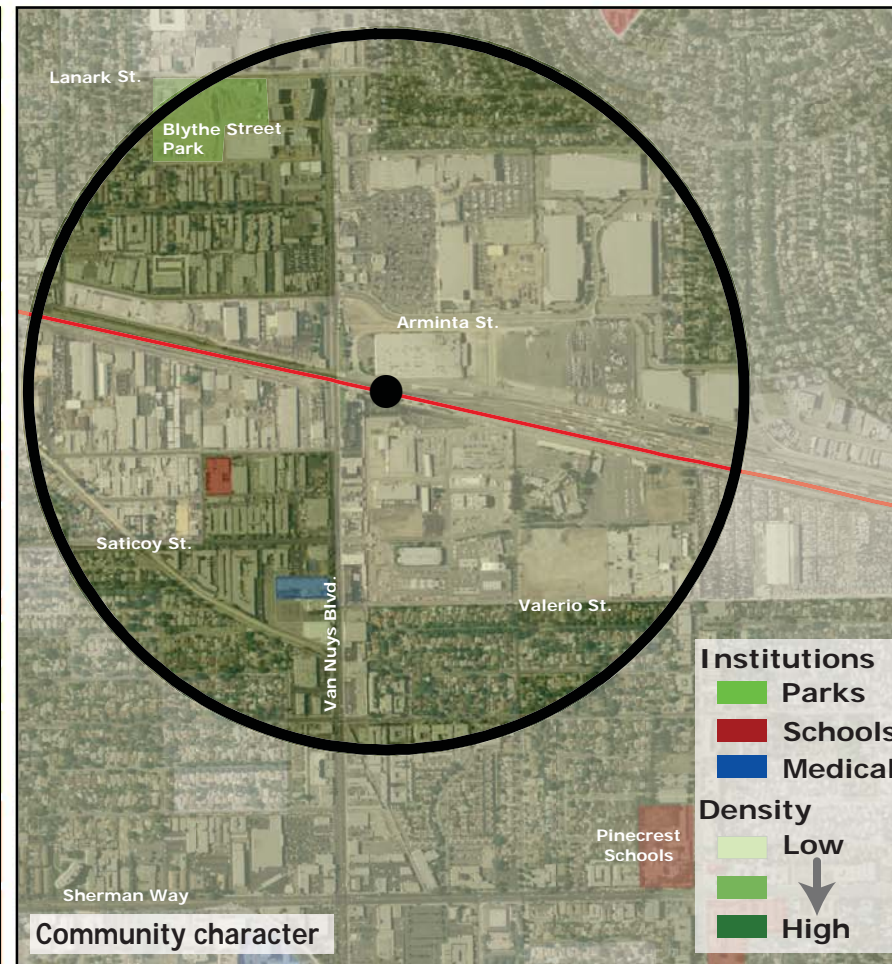
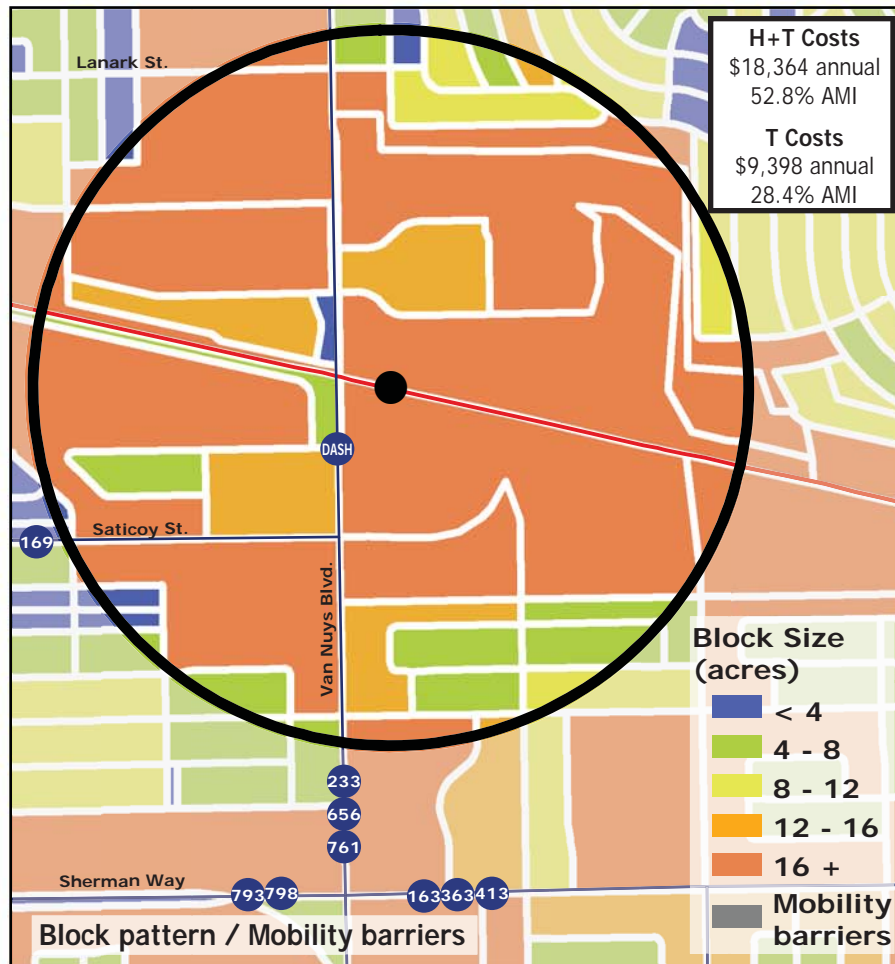


Los Angeles TOD Typology and Case Study Project

Van Nuys - Metrolink

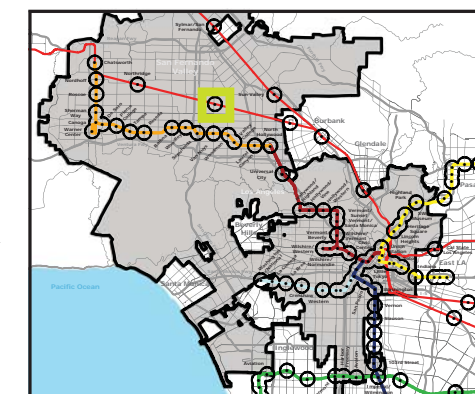
Neighborhood Type Neighborhood Center
Station Type Street level, Low corridor ridership
Neighborhood Change Becoming more low income
Development Opportunity High

Category	Screen	Value	Reads As
Neighborhood Type (Uses)	Use Mix	0.58 jobs/resident	Mixed-use
	Intensity	22.6 persons/acre	Low
Access and Mobility	Daily station boardings	331 riders	Low
	Mobility barriers	large blocks	Semi-walkable
	Nonauto work trips from area	22.1%	High
	Nonauto work trips to area	10.8%	Moderate
Neighborhood Change	Residents with 1 or 0 cars	61.0%	Moderate
	College graduates (1990-2000)	-14.9%	Rapid decrease
	Nonfamily households (1990-2000)	-26.1%	Rapid decrease
	Median Income (1990-2000)	-13.5%	Decrease
	Income diversity (1990-2000)	-6.7%	Decrease
	Affordable Units (2009-2015)	73 units, 0% expiring	No change
Development Opportunity	Underutilized Land	121 acres	Many, clustered
	Avg. commercial & industrial parcel	1.41 acres	High



Legend

- Freeway
- Transit
- Station
- Metrolink Rail Line
- Bus line
- Half-mile radius



October 20, 2009,
Draft

Data sources: 1990 and 2000 Census SF3 Tables; USDA; City of Los Angeles; LA City Metro Transit Authority; County of Los Angeles Assessor's Office; HUD User; CTOD TOD database.