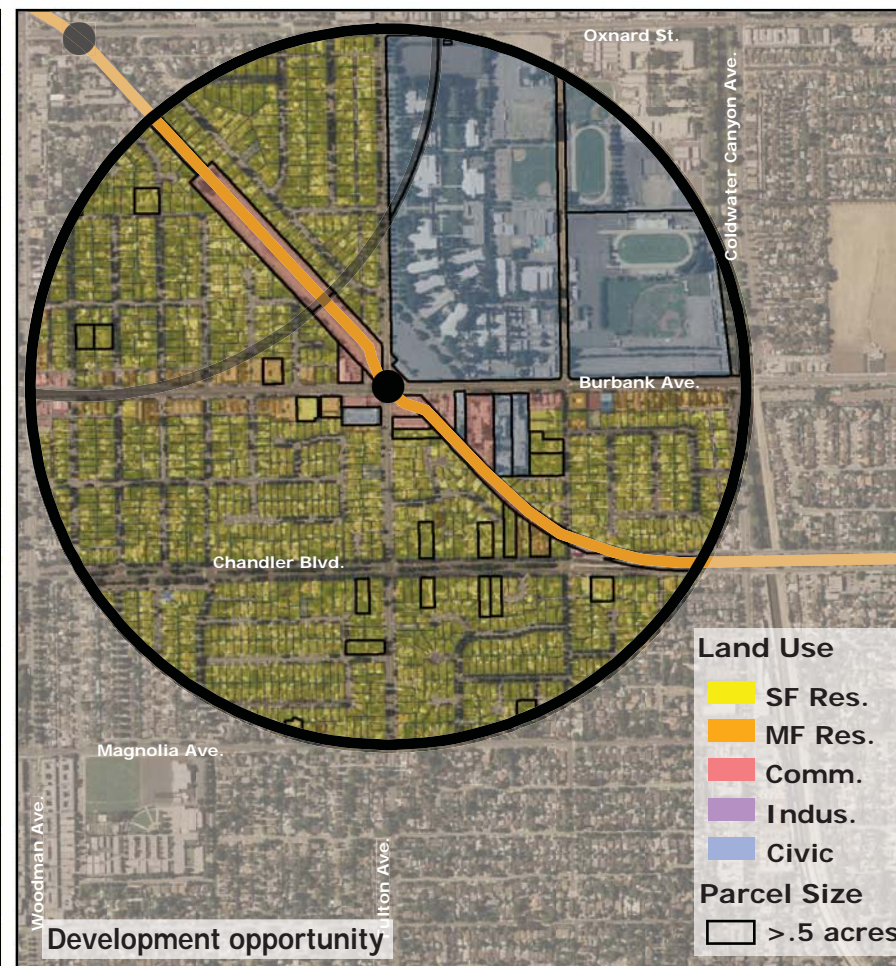
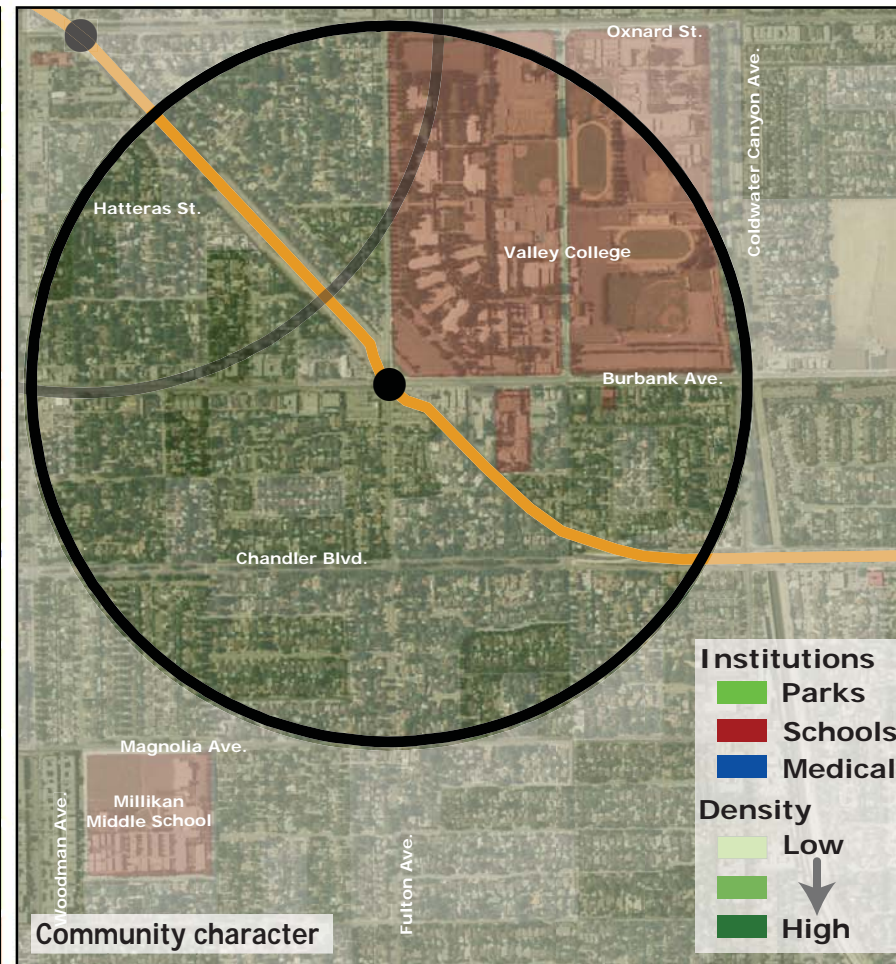
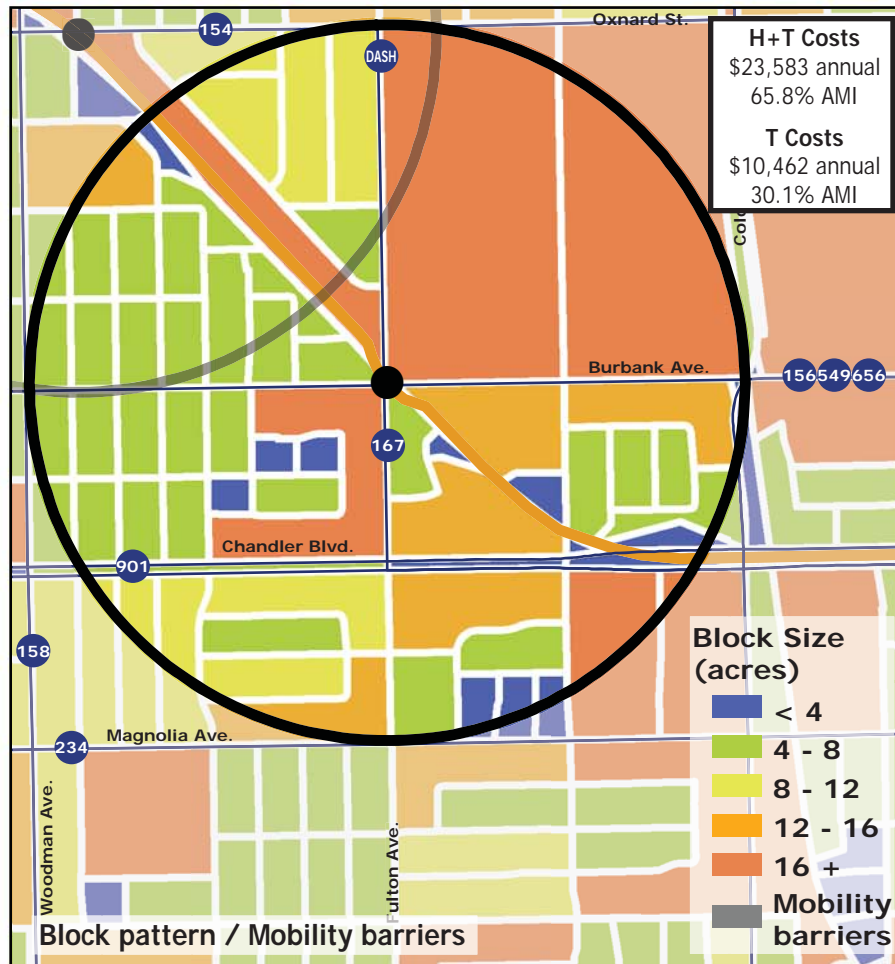
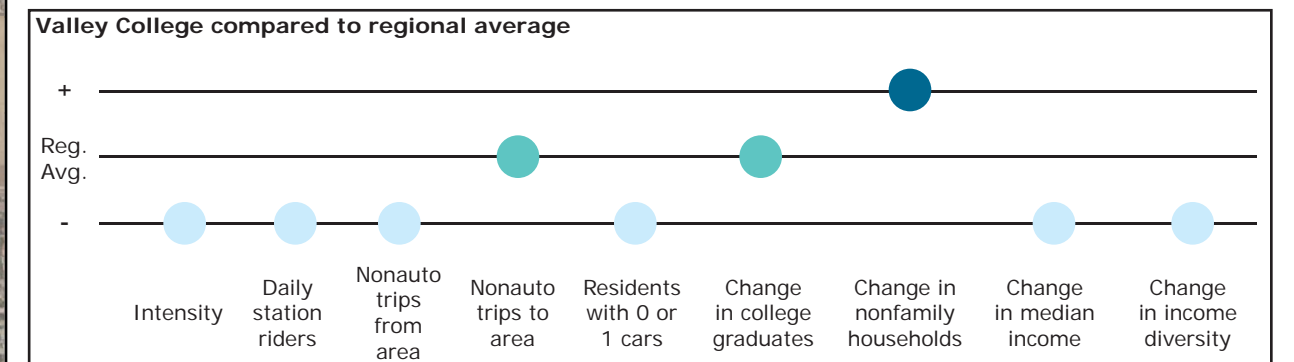


Los Angeles TOD Typology and Case Study Project

Valley College - Orange Line BRT

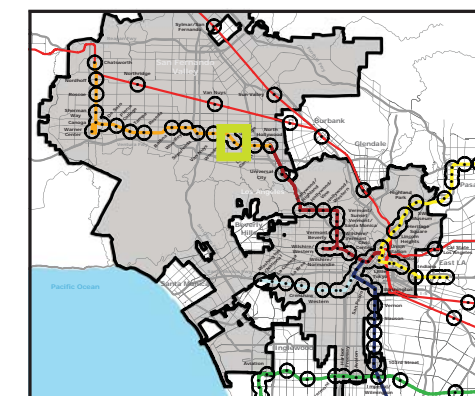
Neighborhood Type Suburban Neighborhood
Station Type Street Level, Moderate corridor ridership
Neighborhood Change Becoming more low income
Development Opportunity Low

| Category | Screen | Value | Reads As |
|---------------------------------|-------------------------------------|----------------------|----------------|
| Neighborhood Type (Uses) | Use Mix | 0.46 jobs/resident | Residential |
| | Intensity | 12.02 persons/acre | Low |
| Access and Mobility | Daily station boardings | 969 riders | Low |
| | Mobility barriers | none | Walkable |
| | Nonauto work trips from area | 4.7% | Low |
| | Nonauto work trips to area | 10.4% | Moderate |
| | Residents with 1 or 0 cars | 43.0% | Low |
| Neighborhood Change | College graduates (1990-2000) | +12.6% | Nominal change |
| | Nonfamily households (1990-2000) | +12.0% | Rapid increase |
| | Median Income (1990-2000) | -20.2% | Decrease |
| | Income diversity (1990-2000) | -6.2% | Decrease |
| | Affordable Units (2009-2015) | 0 units, 0% expiring | No change |
| Development Opportunity | Underutilized Land | 4 acres | Few, clustered |
| | Avg. commercial & industrial parcel | 0.34 acres | Low |



Legend

- Freeway
- Transit
- Station
- Orange Line BRT
- Bus line
- Half-mile radius



October 20, 2009,
Draft

Data sources: 1990 and 2000 Census SF3 Tables; USDA; City of Los Angeles; LA City Metro Transit Authority; County of Los Angeles Assessor's Office; HUD User; CTOD TOD database.