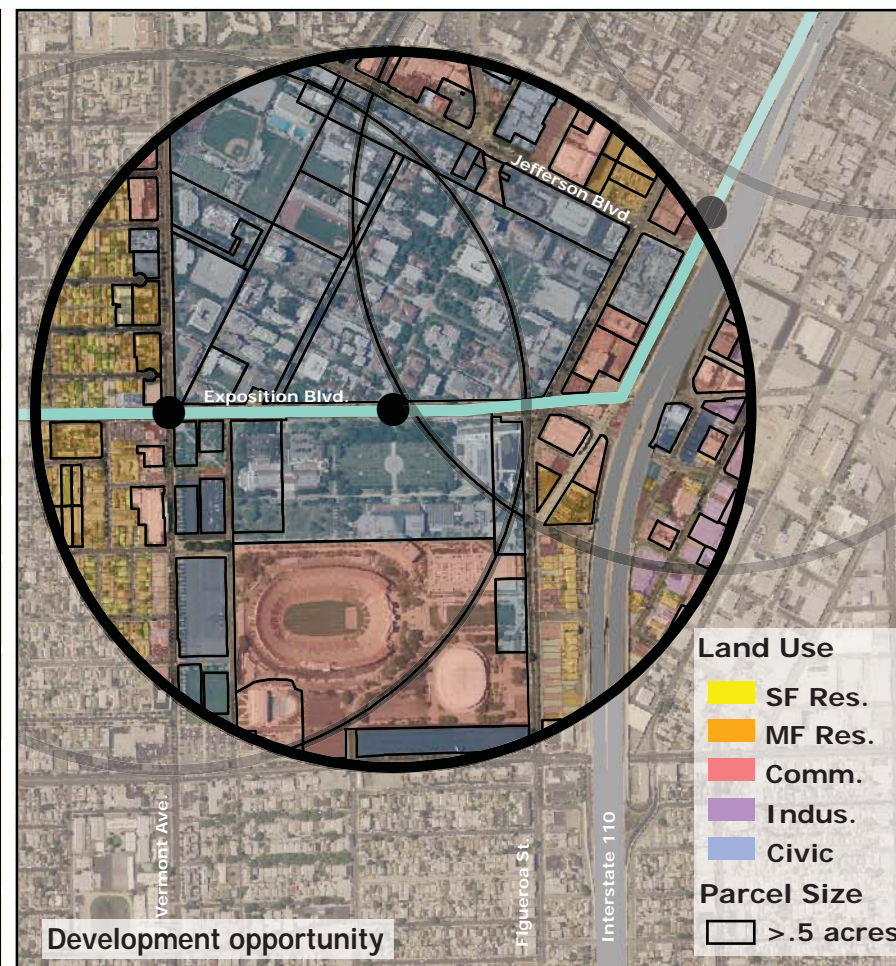
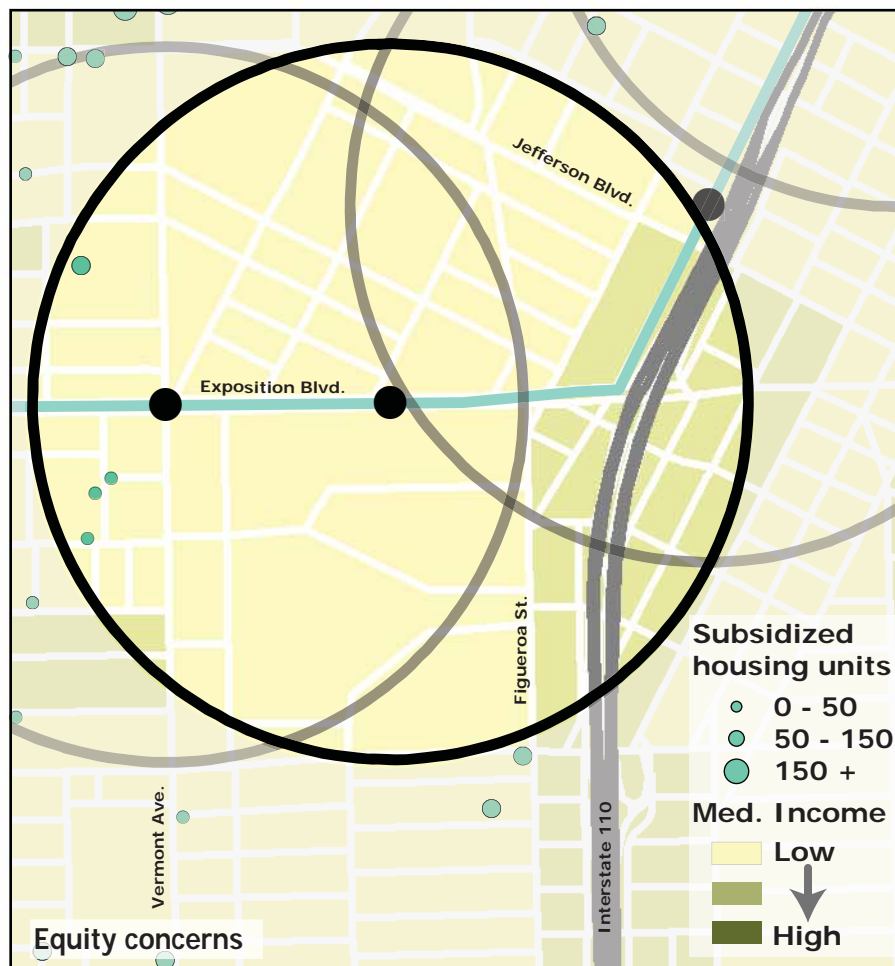
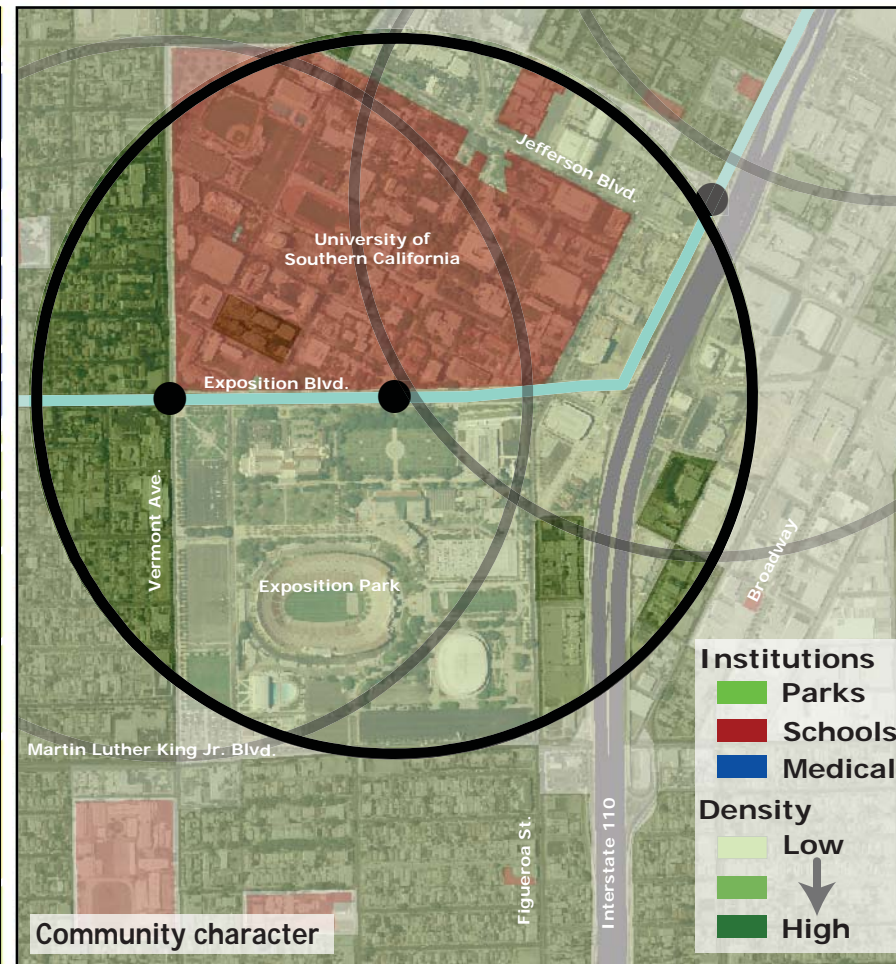
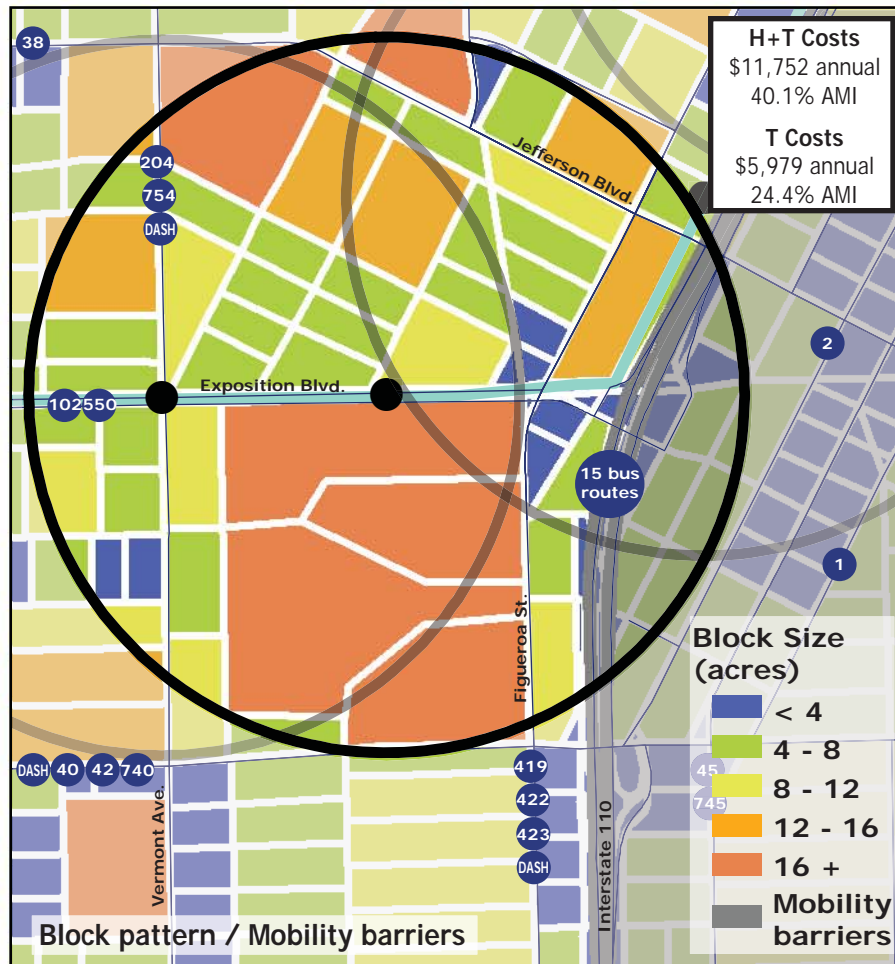
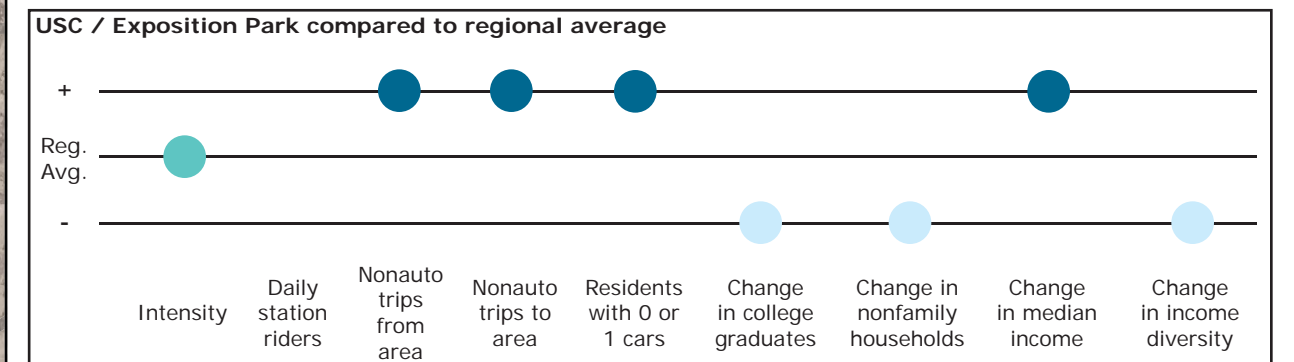


Los Angeles TOD Typology and Case Study Project USC / Exposition Park - Planned Expo Line

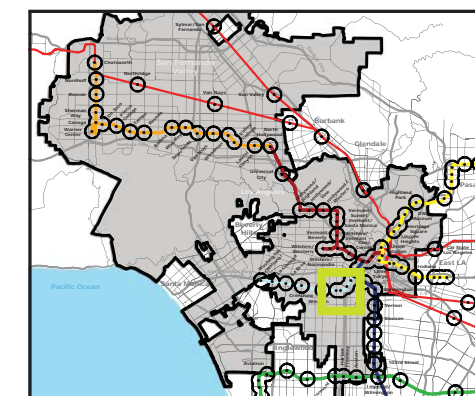
Neighborhood Type Mixed-Use Center
Station Type Street level
Neighborhood Change Stable Low Income
Development Opportunity Low-moderate

Category	Screen	Value	Reads As
Neighborhood Type (Uses)	Use Mix	1.02 jobs/resident	Mixed-Use
	Intensity	37.59 persons/acre	Moderate
Access and Mobility	Daily station boardings	n/a	
	Mobility barriers	2 (freeway proximity)	Semi-walkable
	Nonauto work trips from area	44.2%	High
	Nonauto work trips to area	29.3%	High
	Residents with 1 or 0 cars	70.2%	High
Neighborhood Change	College graduates (1990-2000)	-12.2%	Rapid decrease
	Nonfamily households (1990-2000)	-44.4%	Rapid decrease
	Median Income (1990-2000)	+5.5%	Increase
	Income diversity (1990-2000)	-5.2%	Rapid decrease
	Affordable Units (2009-2015)	107 units, 100% expiring	High loss
Land Opportunity	Underutilized Land	13.7 acres	Few, scattered
	Avg. commercial & industrial parcel	2.74 acres	High



Legend

- Freeway
- Station
- Planned Expo Line
- Bus line
- Half-mile radius



November 5, 2009,
Draft