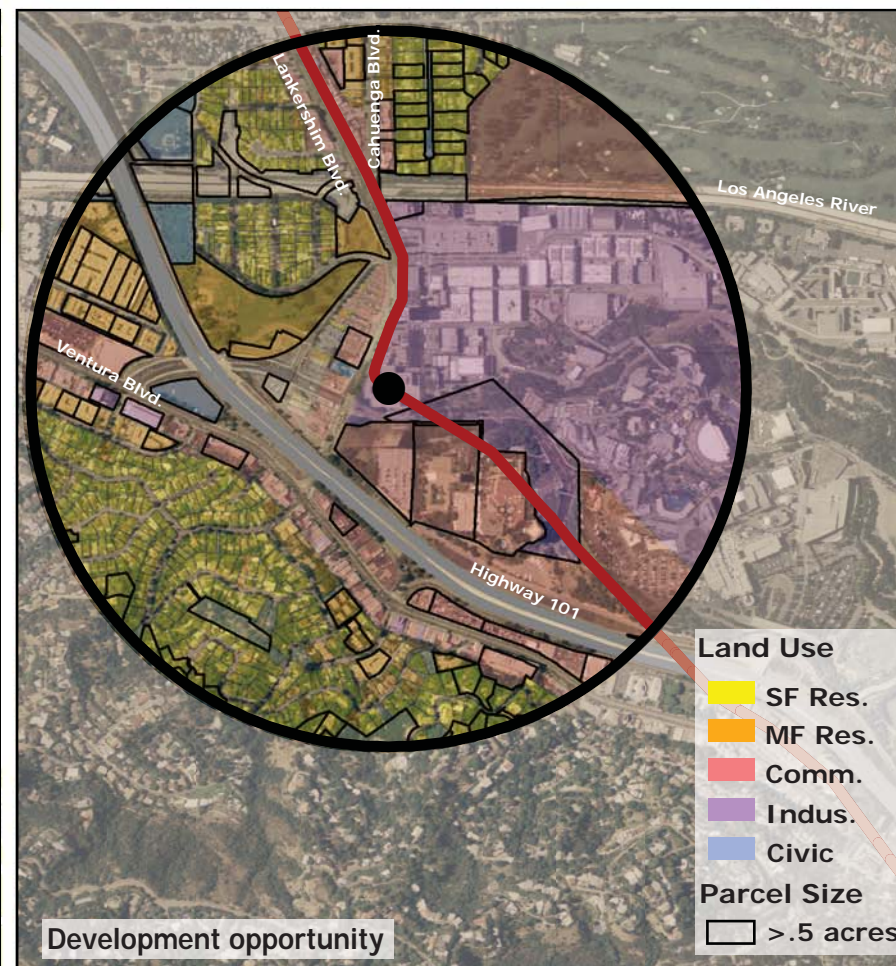
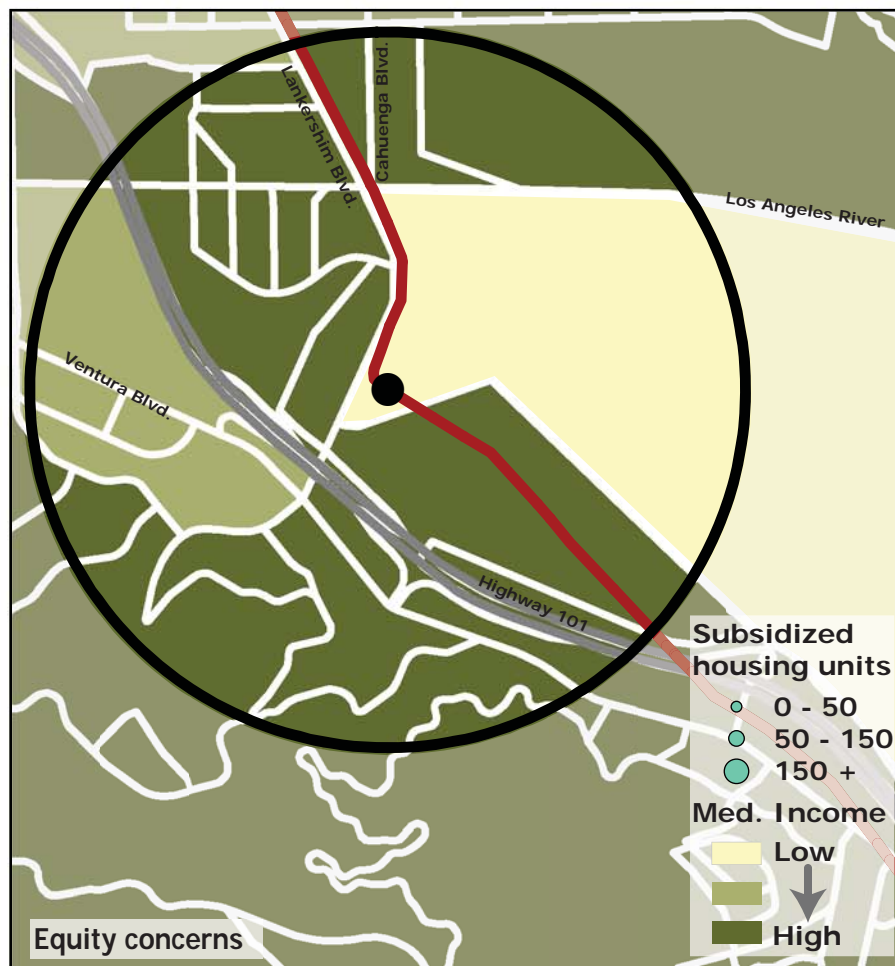
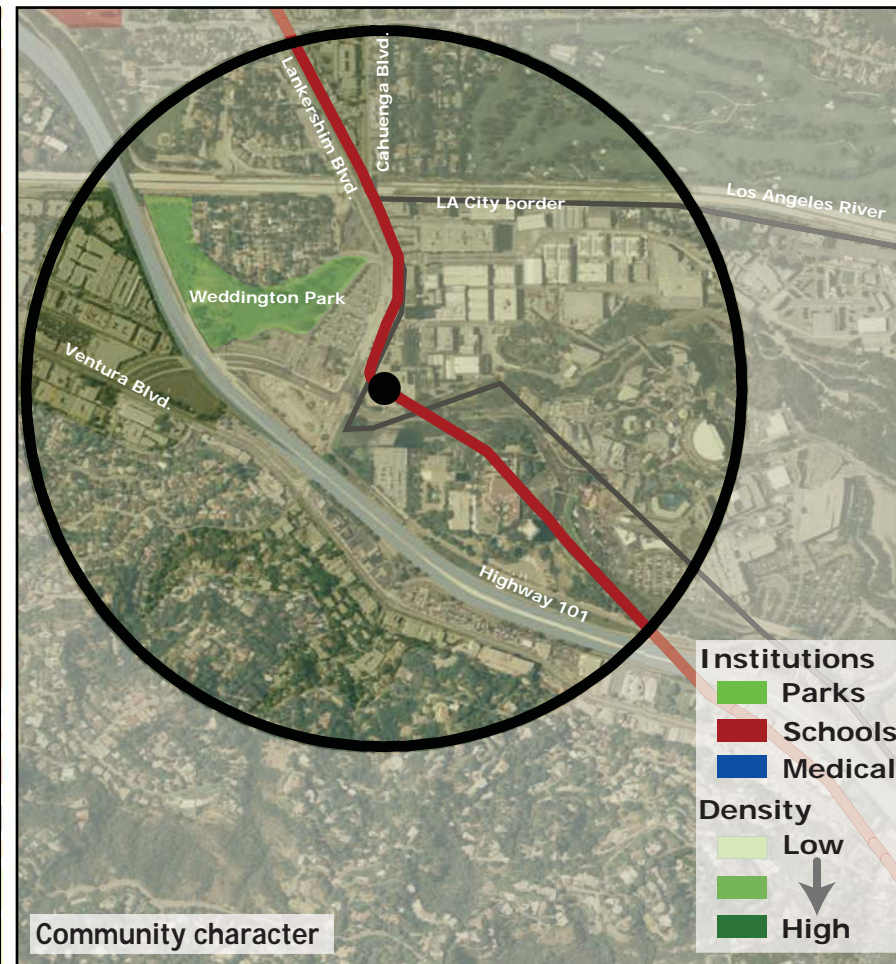
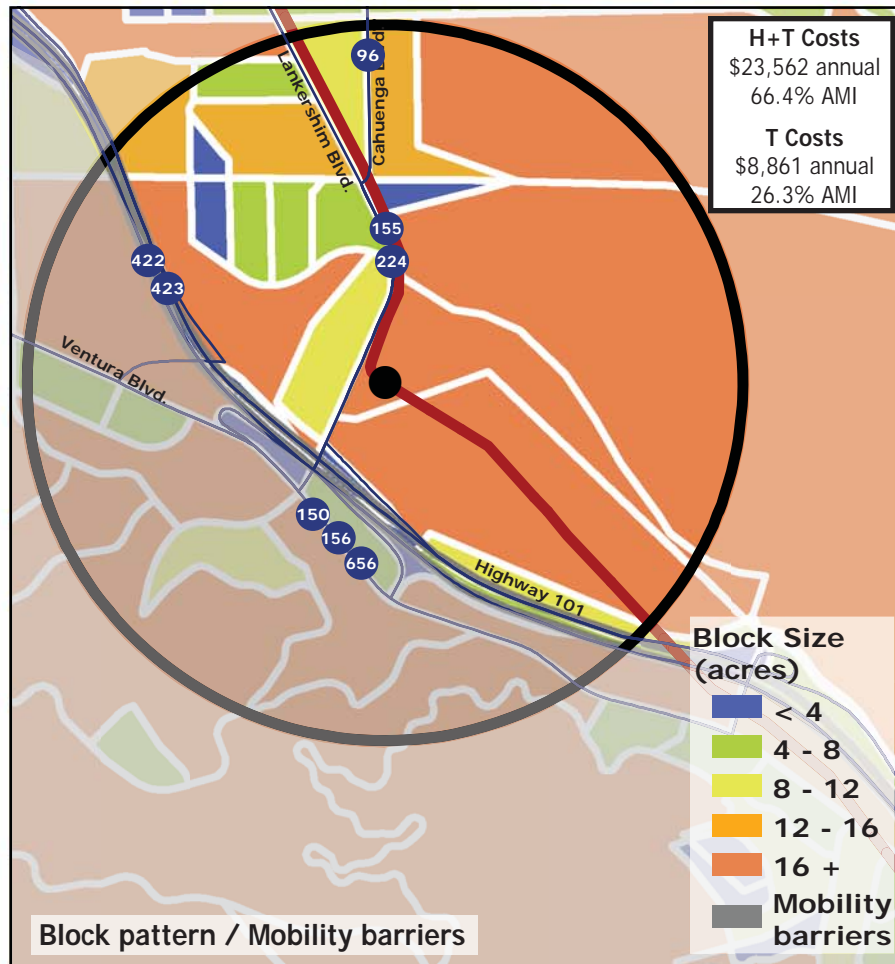
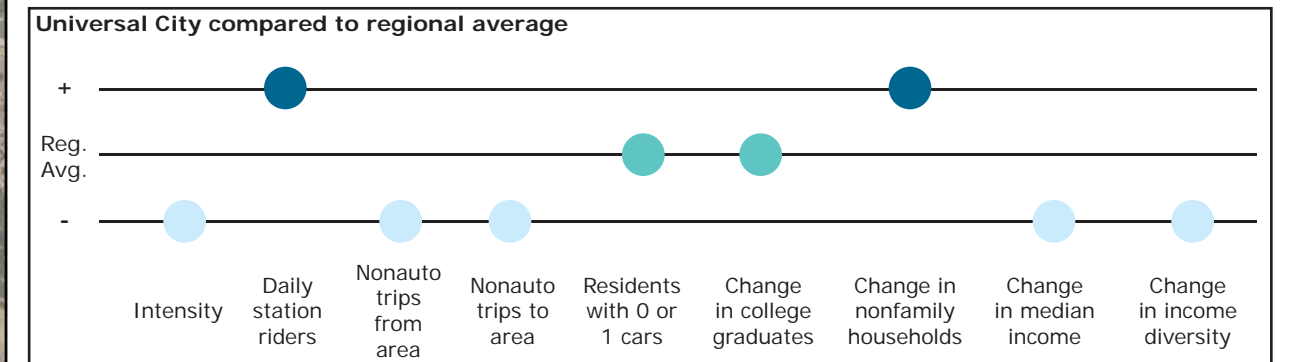


Los Angeles TOD Typology and Case Study Project Universal City - Red Line

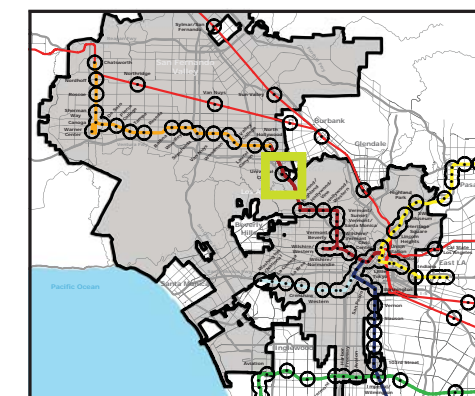
Neighborhood Type Office/Industrial District
Station Type Underground, Moderate corridor ridership
Neighborhood Change Mixed Income
Development Opportunity High

Category	Screen	Value	Reads As
Neighborhood Type (Uses)	Use Mix	1.80 jobs/resident	Employment Area
	Intensity	19.6 persons/acre	Low
Access and Mobility	Daily station boardings	7,525 riders	High
	Mobility barriers	freeway, large blocks	Auto-oriented
	Nonauto work trips from area	3.9%	Low
	Nonauto work trips to area	8.1%	Low
	Residents with 1 or 0 cars	60.0%	Moderate
Neighborhood Change	College graduates (1990-2000)	+15.2%	Nominal change
	Nonfamily households (1990-2000)	+3.7%	Increase
	Median Income (1990-2000)	-13.8%	Decrease
	Income diversity (1990-2000)	-9.1%	Decrease
	Affordable Units (2009-2015)	0 units, 0% expiring	No change
Development Opportunity	Underutilized Land	85 acres	High
	Avg. commercial & industrial parcel	2.78 acres	High



Legend

- Freeway
- Station
- Subway
- Bus line
- Half-mile radius



October 20, 2009,
Draft

Data sources: 1990 and 2000 Census SF3 Tables; USDA; City of Los Angeles; LA City Metro Transit Authority; County of Los Angeles Assessor's Office; HUD User; CTOD TOD database.