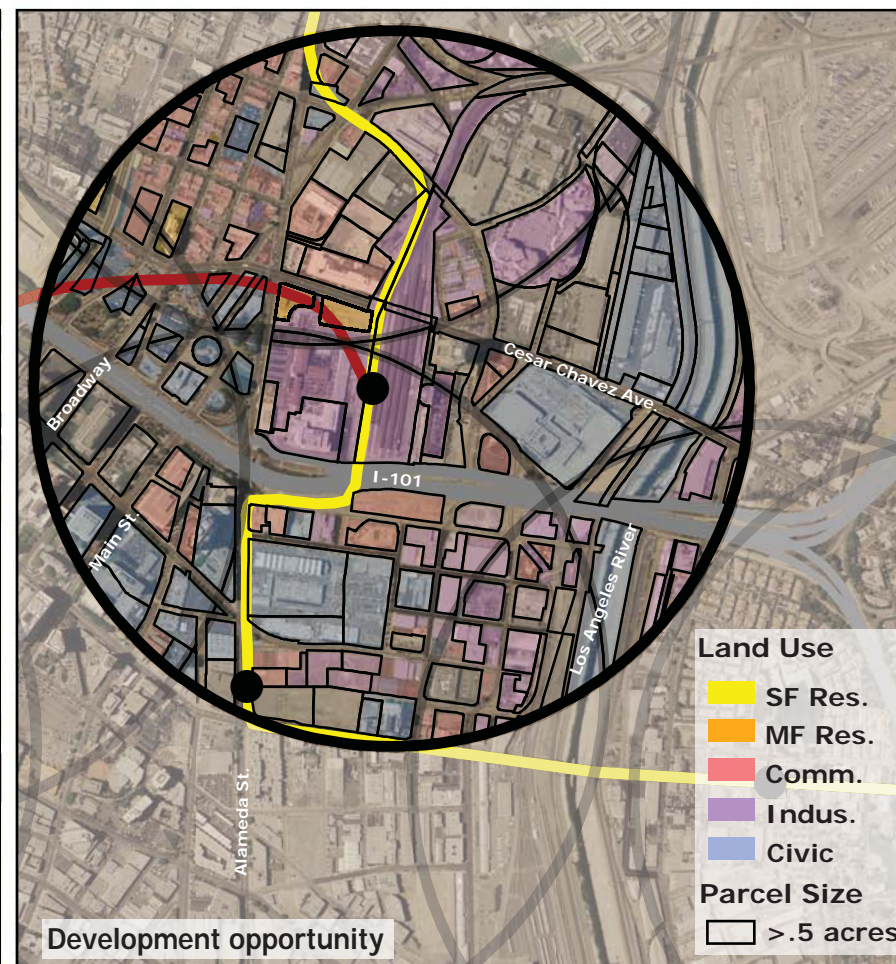
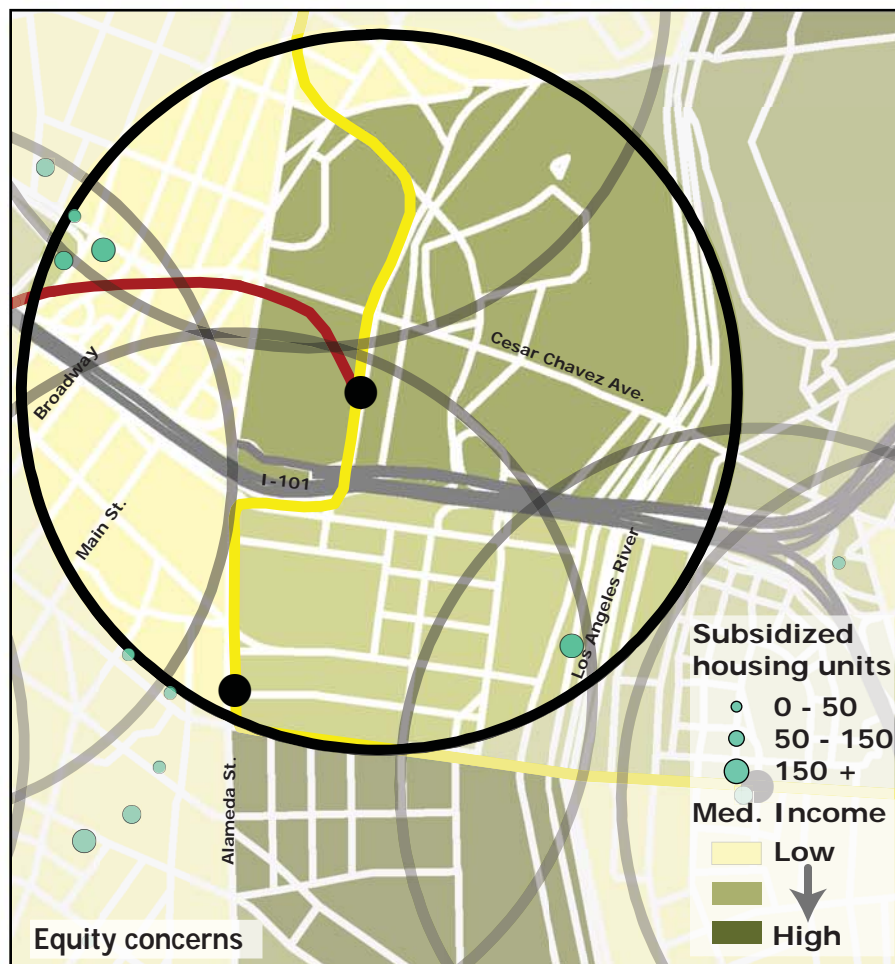
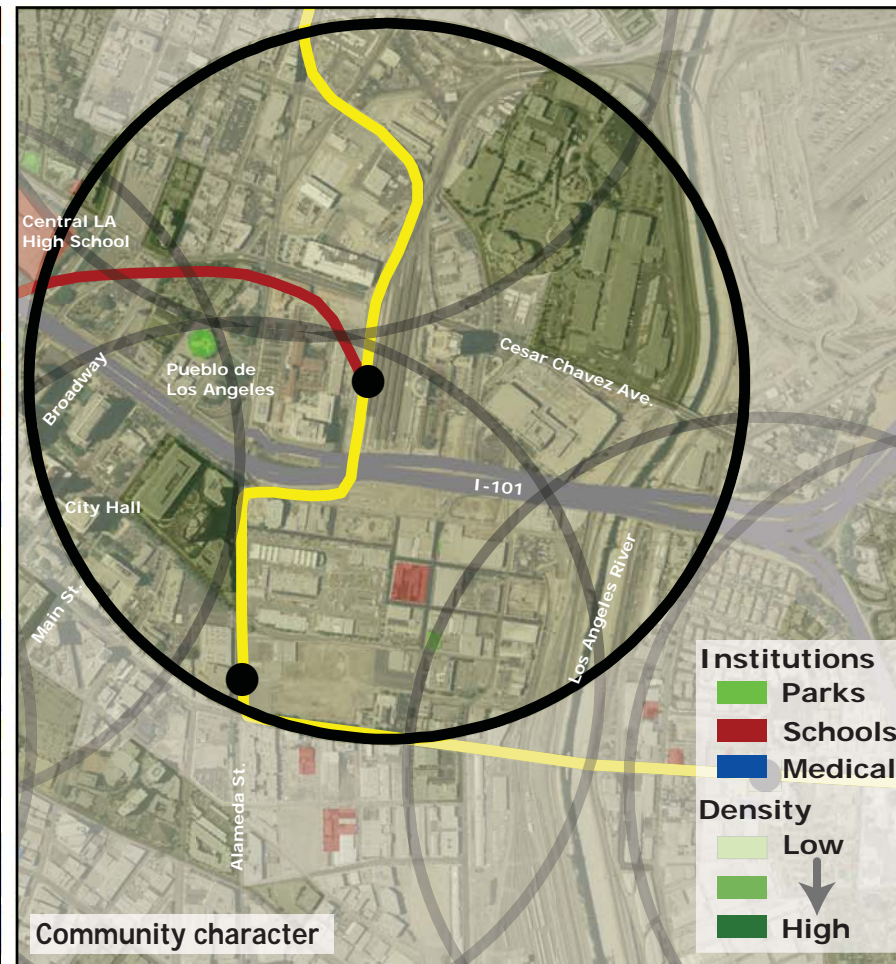
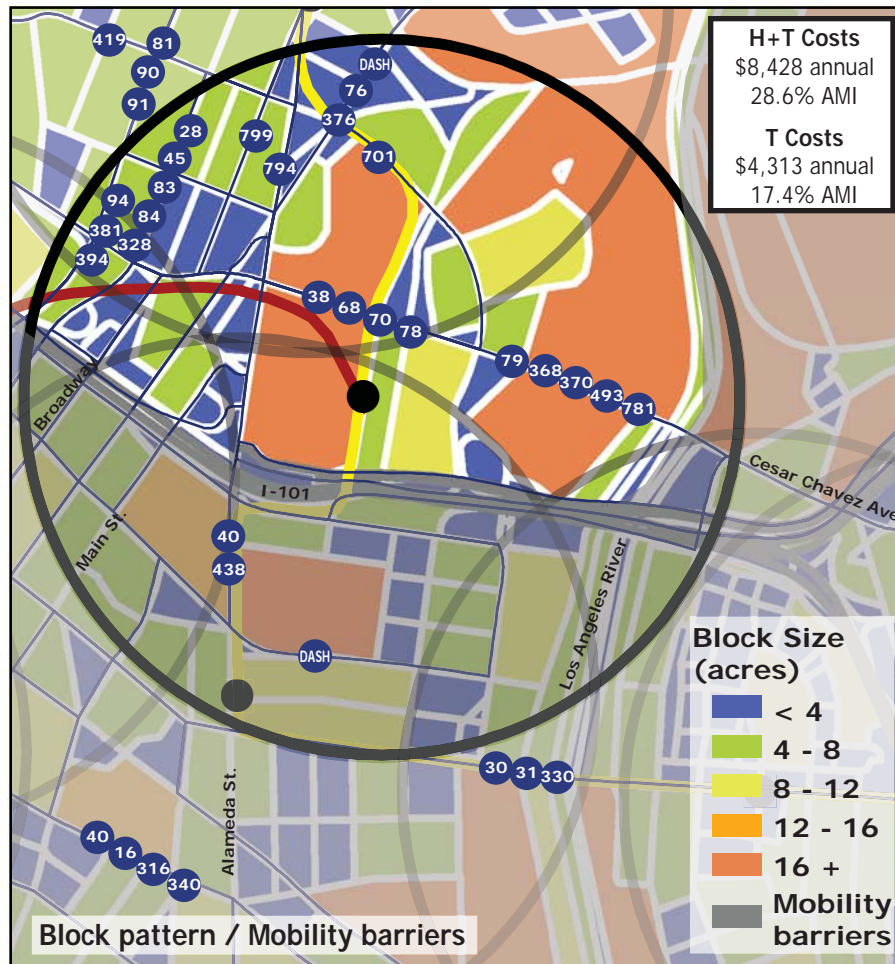
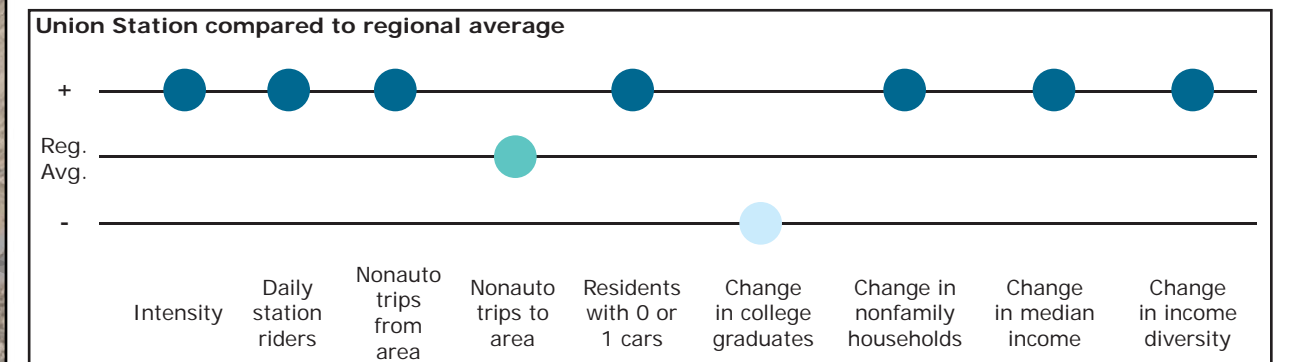


Los Angeles TOD Typology and Case Study Project

Union Station - Subway and Gold Line

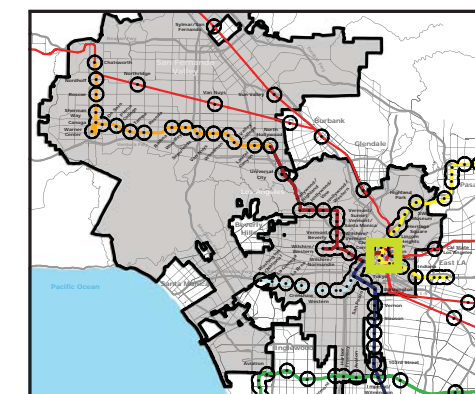
Neighborhood Type	CBD/Special District
Station Type	Underground, High corridor ridership
Neighborhood Change	Low Income
Development Opportunity	High

Category	Screen	Value	Reads As
Neighborhood Type (Uses)	Use Mix	6.43 jobs/resident	Employment Area
	Intensity	165.7 persons/acre	High
Access and Mobility	Daily station boardings	25,542 riders	High
	Mobility barriers	freeway; railroads	Semi-walkable
	Nonauto work trips from area	46.1%	High
	Nonauto work trips to area	15.6%	Moderate
	Residents with 1 or 0 cars	84.3%	High
Neighborhood Change	College graduates (1990-2000)	-57.3%	Rapid decrease
	Nonfamily households (1990-2000)	+43.48%	Rapid increase
	Median Income (1990-2000)	+1.4%	Increase
	Income diversity (1990-2000)	+2.2%	Increase
	Affordable Units (2009-2015)	614 units, 44% expiring	Low loss
Development Opportunity	Underutilized Land	96.9 acres	Large, clustered
	Avg. commercial & industrial parcel	1.23 acres	High



Legend

- Freeway
- Transit
- Station
- Gold Line
- Subway
- Bus line
- Half-mile radius



October 20, 2009,
Draft



Data sources: 1990 and 2000 Census SF3 Tables; USDA; City of Los Angeles; LA City Metro Transit Authority; County of Los Angeles Assessor's Office; HUD User; CTOD TOD database.