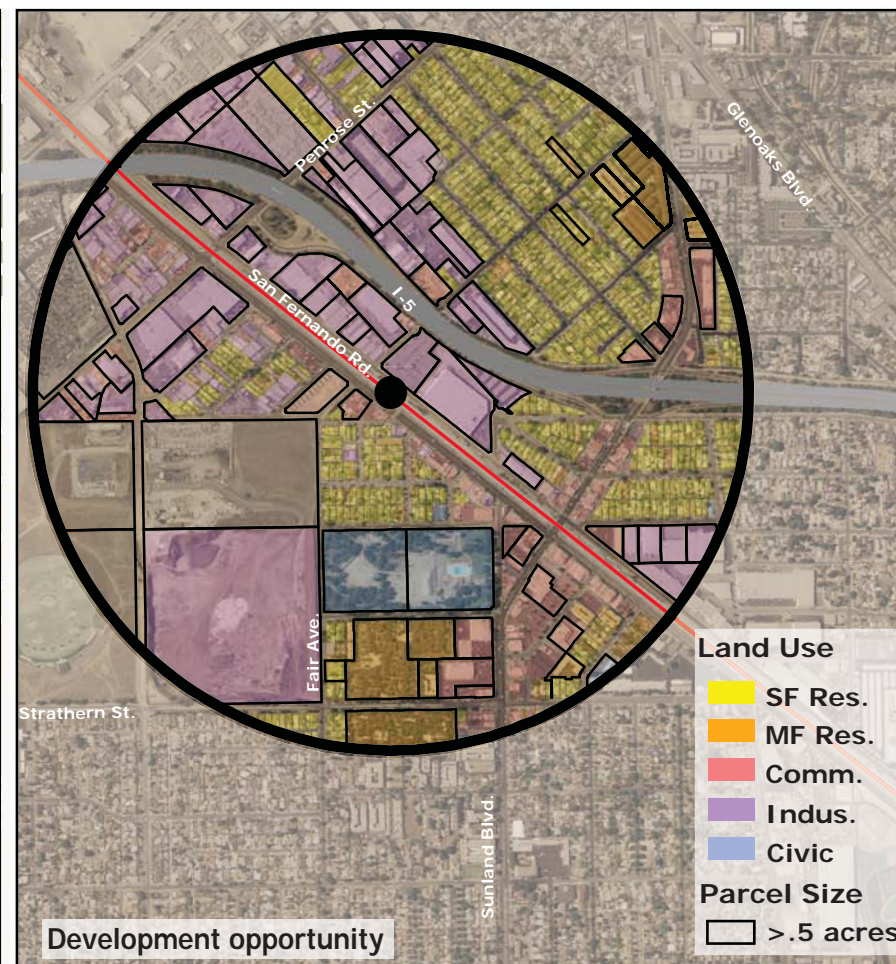
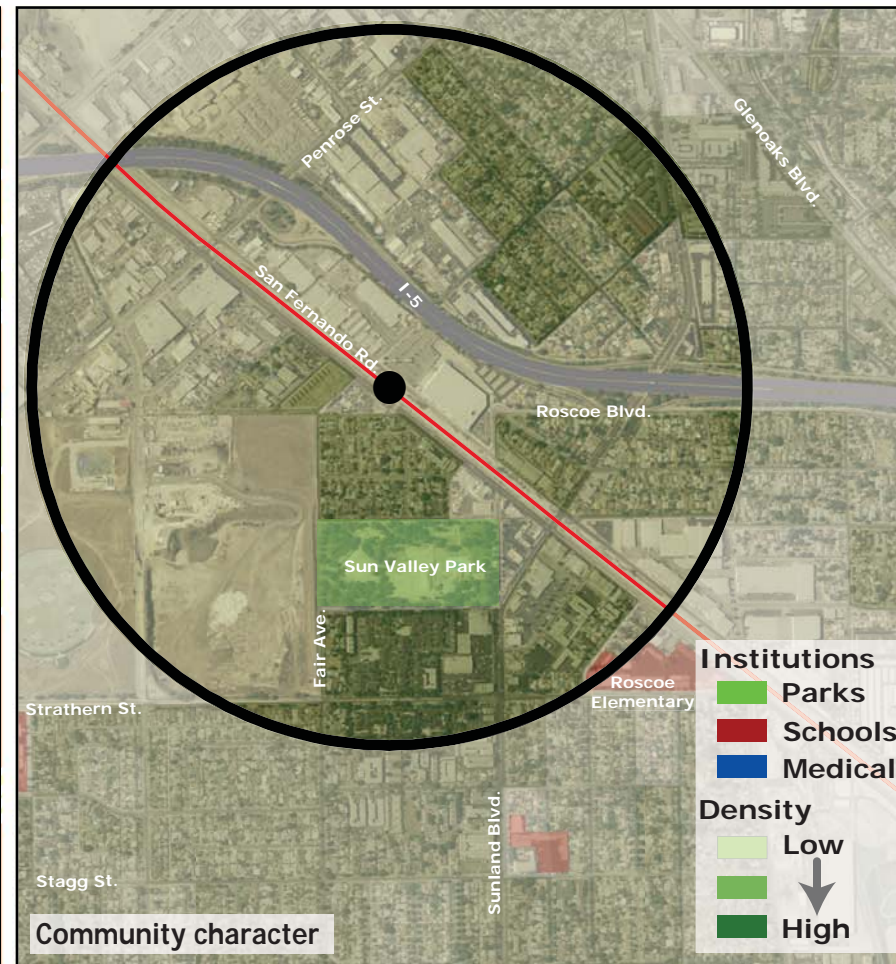
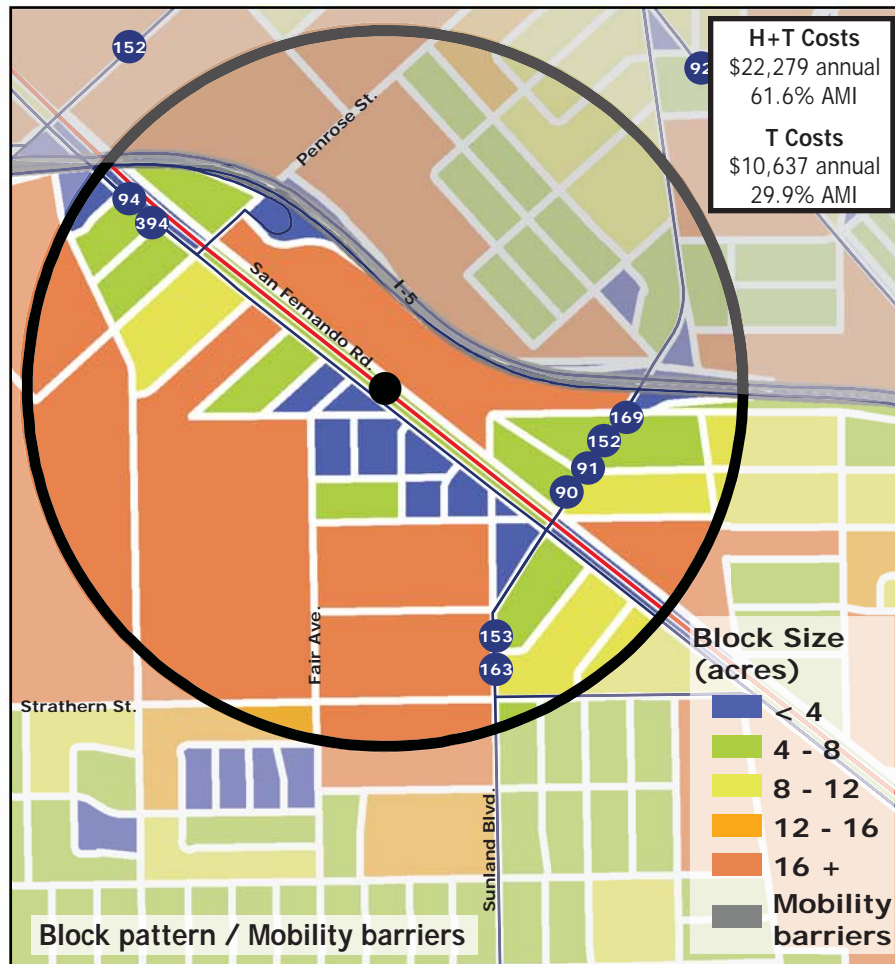
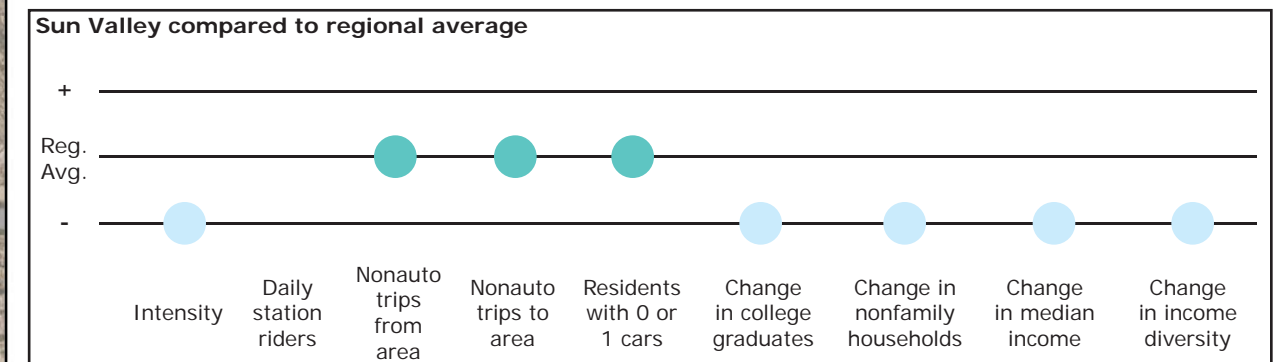


# Los Angeles TOD Typology and Case Study Project

## Sun Valley - Metrolink

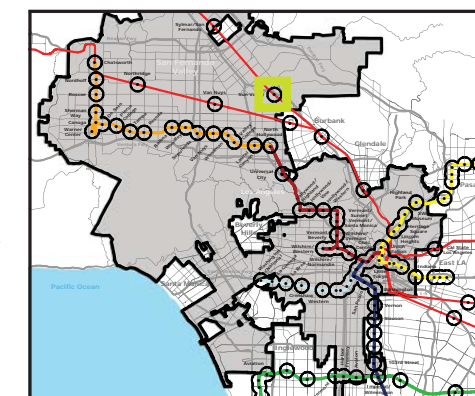
**Neighborhood Type** Suburban Neighborhood  
**Station Type** Street level  
**Neighborhood Change** Becoming more low income  
**Development Opportunity** High-moderate

Category	Screen	Value	Reads As
<b>Neighborhood Type (Uses)</b>	Use Mix	0.39 jobs/resident	Residential
	Intensity	14.96 persons/acre	Low
<b>Access and Mobility</b>	Daily station boardings	n/a	
	Mobility barriers	large blocks	Semi-walkable
	Nonauto work trips from area	15.5%	Moderate
	Nonauto work trips to area	11.5%	Moderate
	Residents with 1 or 0 cars	46.6%	Moderate
<b>Neighborhood Change</b>	College graduates (1990-2000)	-14.5%	Rapid decrease
	Nonfamily households (1990-2000)	-39.1%	Rapid decrease
	Median Income (1990-2000)	-22.9%	Rapid decrease
	Income diversity (1990-2000)	-6.1%	Decrease
	Affordable Units (2009-2015)	0 units, 0% expiring	No change
<b>Development Opportunity</b>	Underutilized Land	110 acres	Many, scattered
	Avg. commercial & industrial parcel	0.76 acres	Moderate



### Legend

- Freeway
- Transit
  - Station
  - Metrolink Rail Line
  - Bus line
  - Half-mile radius



October 20, 2009,  
Draft

Data sources: 1990 and 2000 Census SF3 Tables; USDA; City of Los Angeles; LA City Metro Transit Authority; County of Los Angeles Assessor's Office; HUD User; CTOD TOD database.