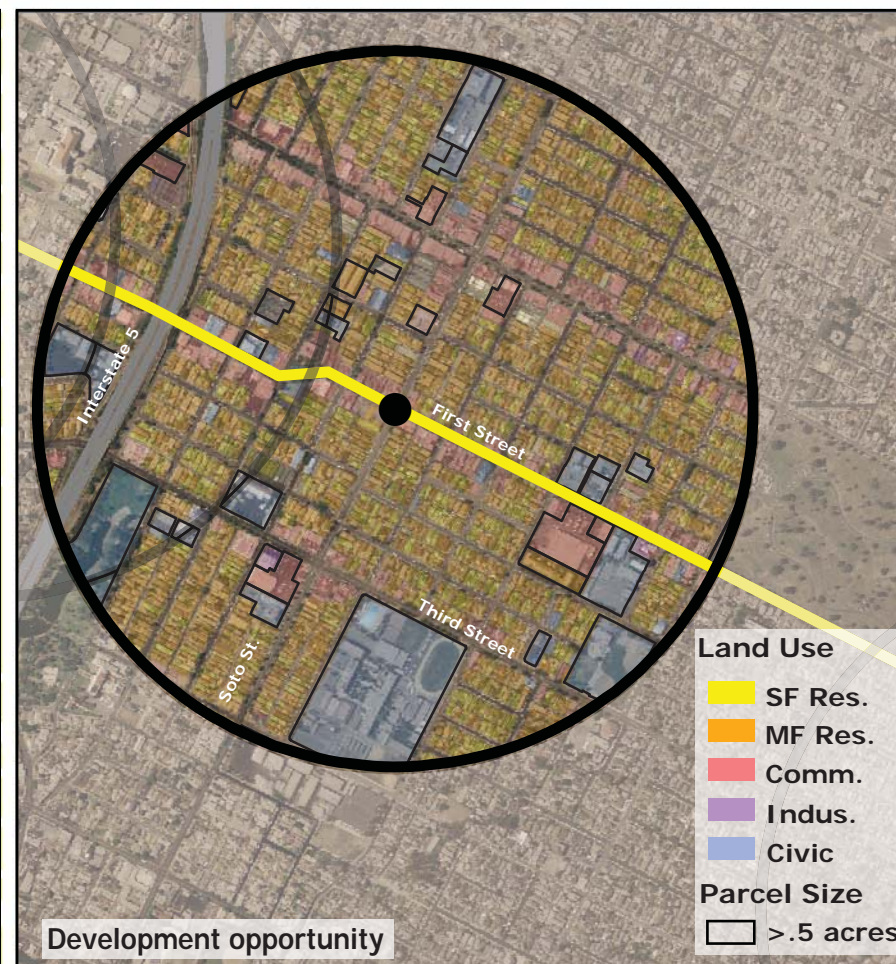
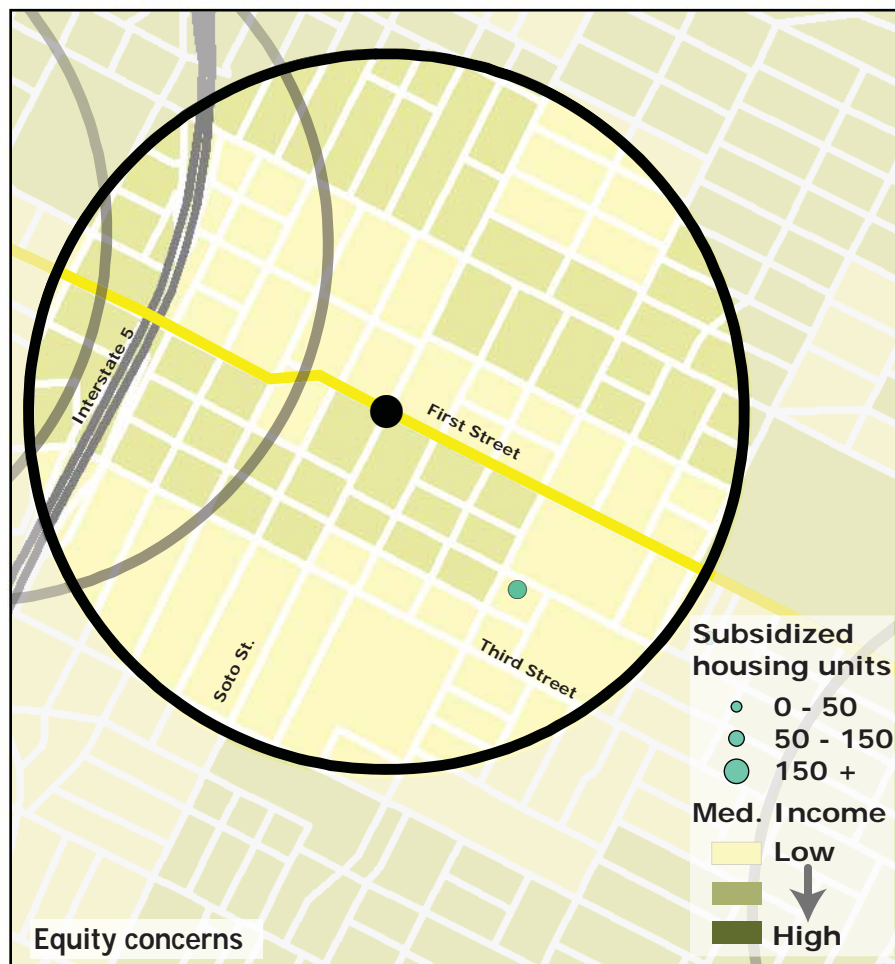
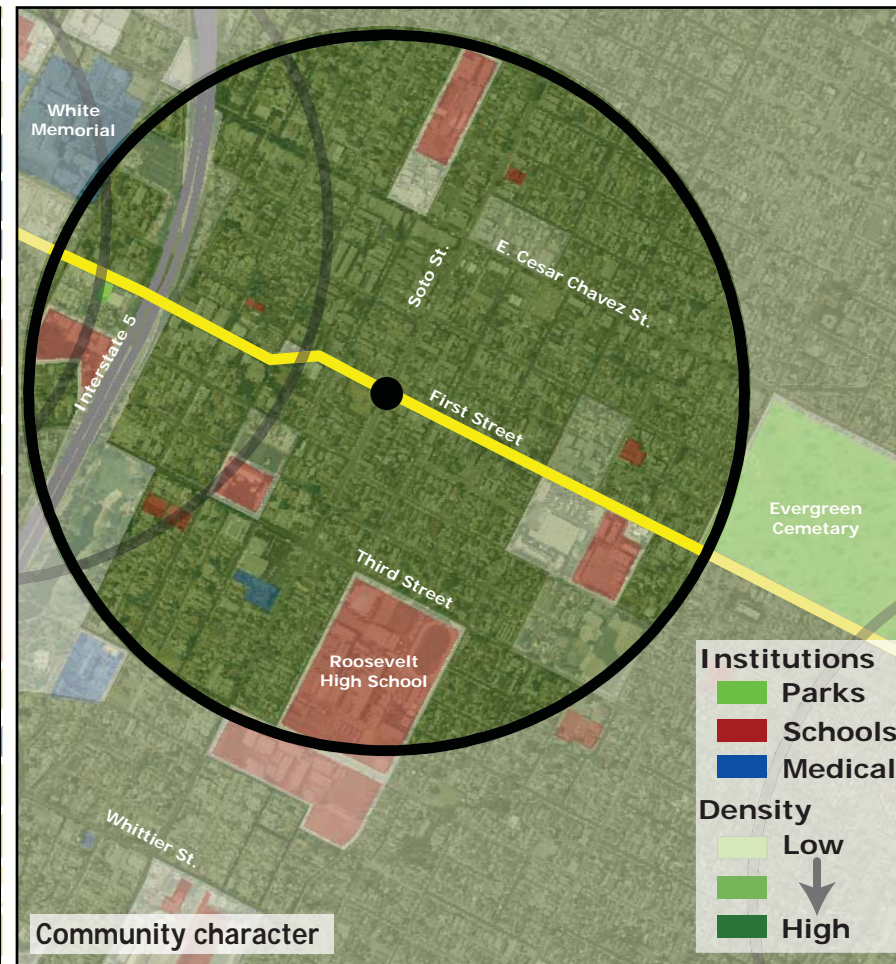
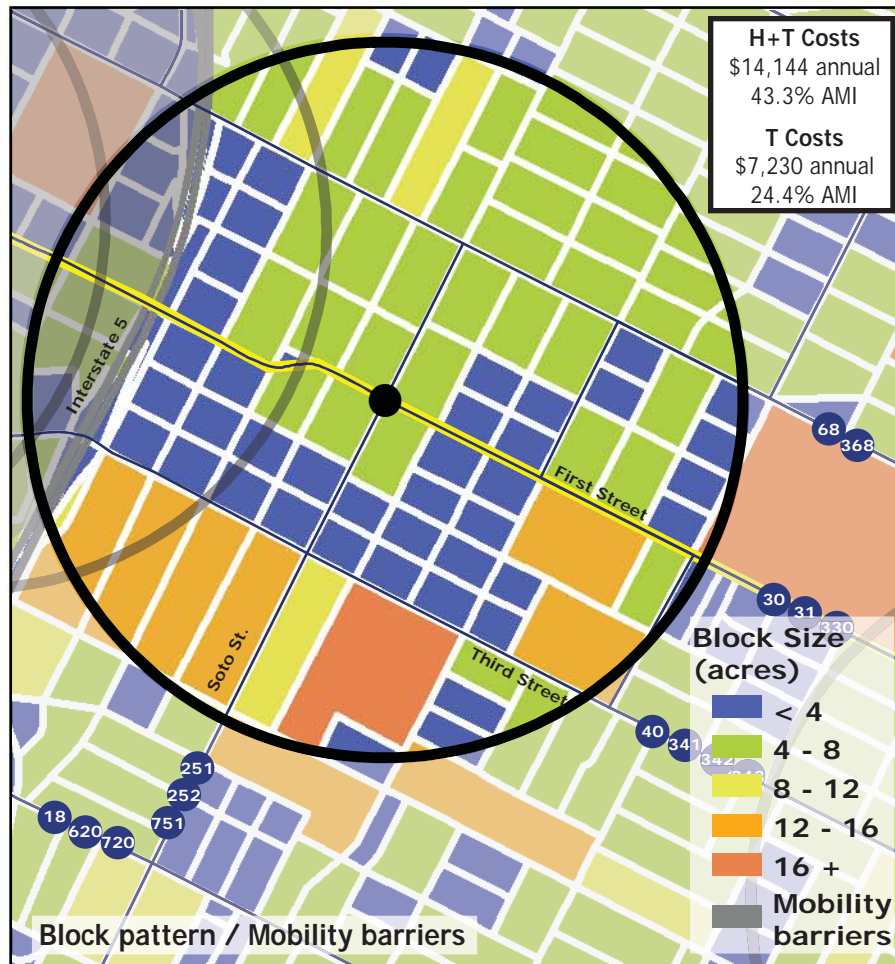
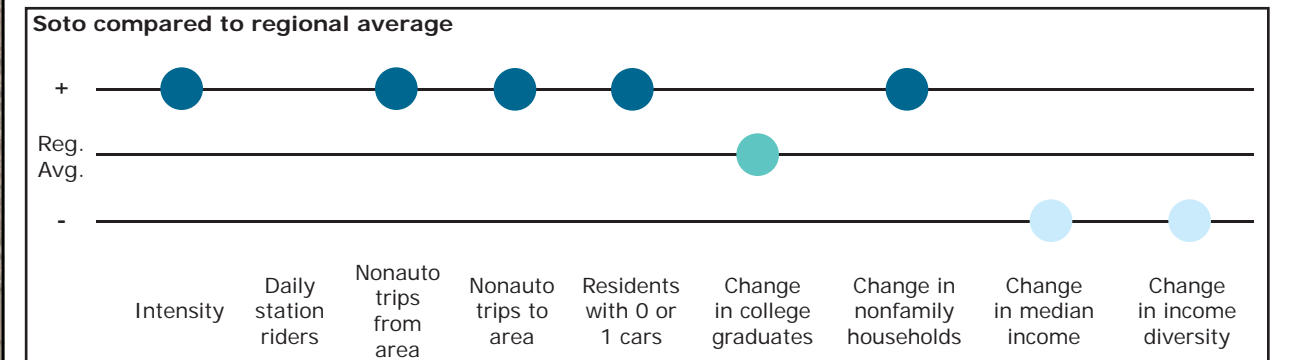


# Los Angeles TOD Typology and Case Study Project

## Soto - Gold Line Eastside Extension

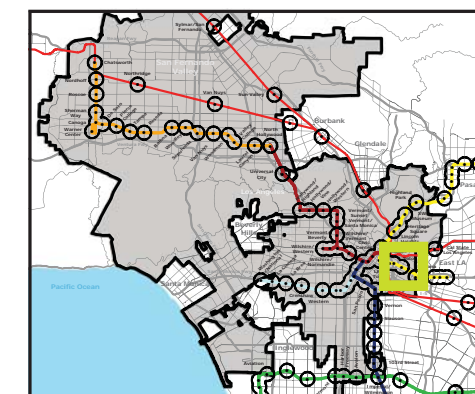
**Neighborhood Type** Urban Neighborhood  
**Station Type** Underground  
**Neighborhood Change** Becoming more low income  
**Development Opportunity** Low-moderate

Category	Screen	Value	Reads As
<b>Neighborhood Type (Uses)</b>	Use Mix	0.07 jobs/resident	Residential
	Intensity	44.0 persons/acre	High
<b>Access and Mobility</b>	Daily station boardings	n/a	
	Mobility barriers	freeway proximity	Semi-walkable
	Nonauto work trips from area	31.7%	High
	Nonauto work trips to area	22.6%	High
	Residents with 1 or 0 cars	75.1%	High
<b>Neighborhood Change from 1990 to 2000</b>	College graduates (1990-2000)	+2.4%	Nominal change
	Nonfamily households (1990-2000)	+9.2%	Increase
	Median Income (1990-2000)	-16.0%	Rapid decrease
	Income diversity (1990-2000)	-9.3%	Decrease
	Affordable Units (2009-2015)	88 units, 100% expiring	High loss
<b>Development Opportunity</b>	Underutilized Land	31.2 acres	Some, scattered
	Avg. commercial & industrial parcel	0.20 acres	Low



### Legend

- Freeway
- Station
- Gold Line
- Bus line
- Half-mile radius



November 5, 2009, Draft