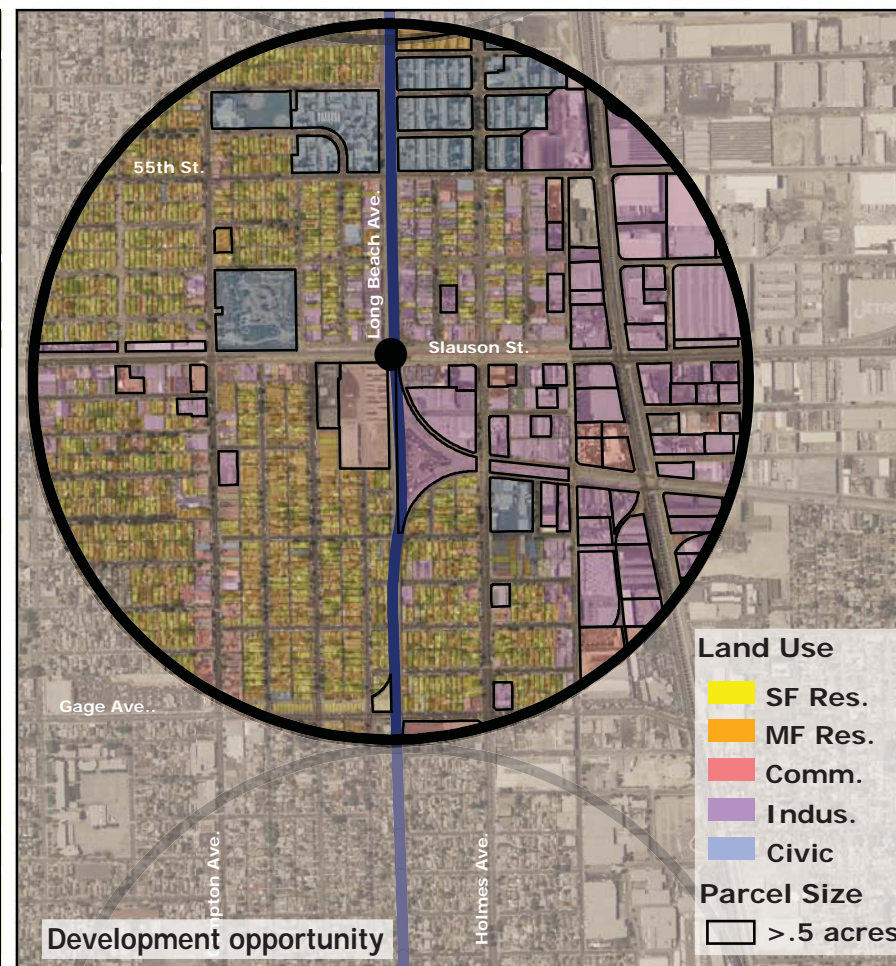
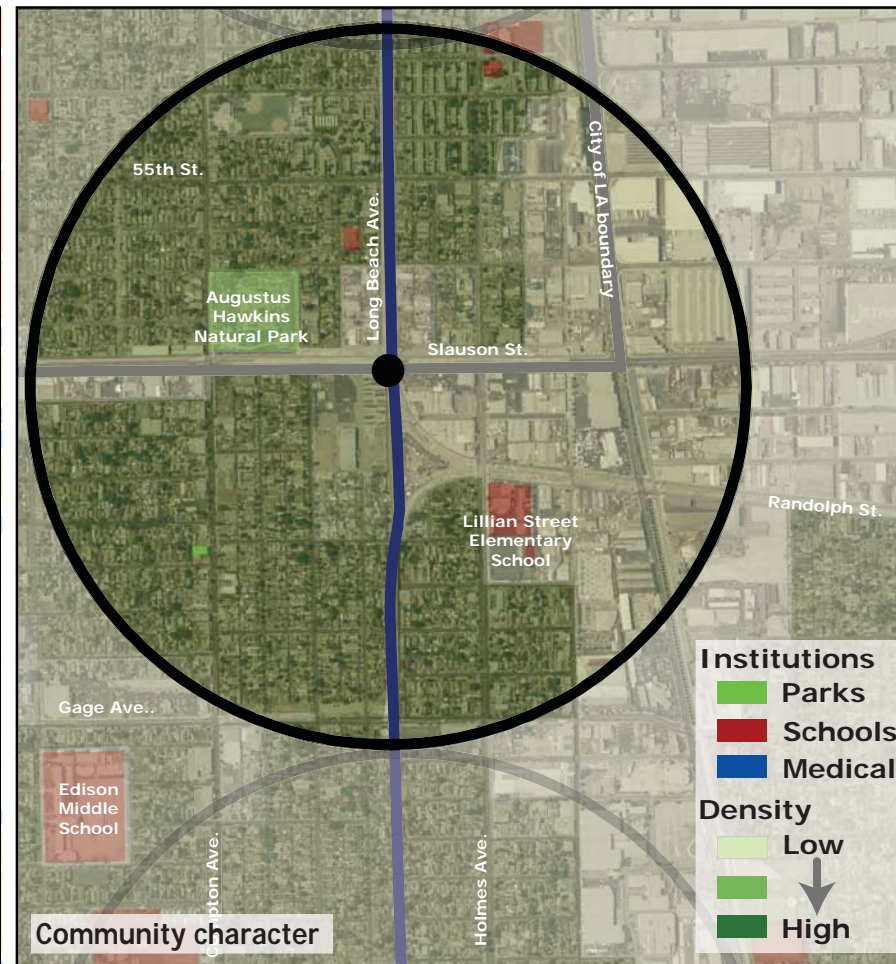
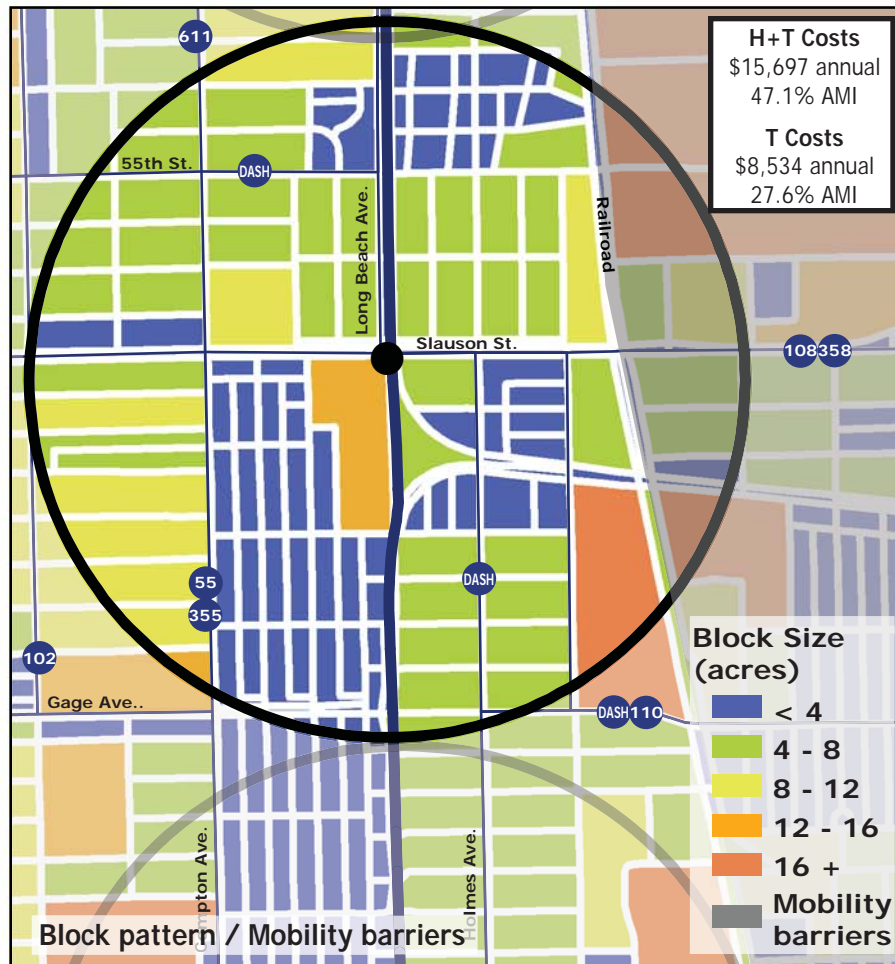
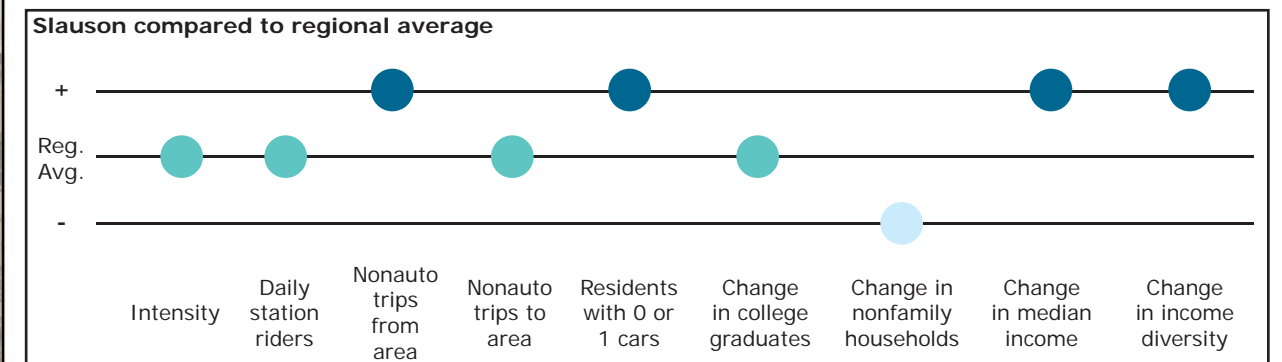


# Los Angeles TOD Typology and Case Study Project

## Slauson - Blue Line

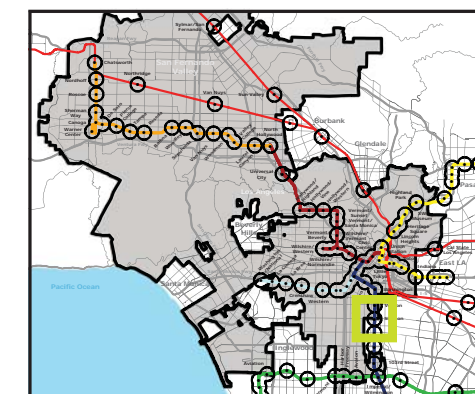
**Neighborhood Type** Transit Neighborhood  
**Station Type** Elevated, Moderate corridor ridership  
**Neighborhood Change** Stable Low Income  
**Development Opportunity** Moderate

Category	Screen	Value	Reads As
<b>Neighborhood Type (Uses)</b>	Use Mix	0.24 jobs/resident	Residential
	Intensity	26.2 persons/acre	Moderate
<b>Access and Mobility</b>	Daily station boardings	2,253 riders	Moderate
	Mobility barriers	railroads; industrial	Semi-walkable
	Nonauto work trips from area	30.2%	High
	Nonauto work trips to area	17.3%	Moderate
<b>Neighborhood Change</b>	Residents with 1 or 0 cars	69.1%	High
	College graduates (1990-2000)	+4.3%	Nominal change
	Nonfamily households (1990-2000)	-15.6%	Rapid decrease
	Median Income (1990-2000)	+8.4%	Increase
	Income diversity (1990-2000)	+3.5%	Increase
	Affordable Units (2009-2015)	0 units, 0% expiring	No change
<b>Development Opportunity</b>	Underutilized Land	85 acres	Small, clustered
	Avg. commercial & industrial parcel	0.55 acres	Moderate



### Legend

- Freeway
- Station
- Blue Line
- Bus line
- Half-mile radius



October 20, 2009,  
Draft

Data sources: 1990 and 2000 Census SF3 Tables; USDA; City of Los Angeles; LA City Metro Transit Authority; County of Los Angeles Assessor's Office; HUD User; CTOD TOD database.