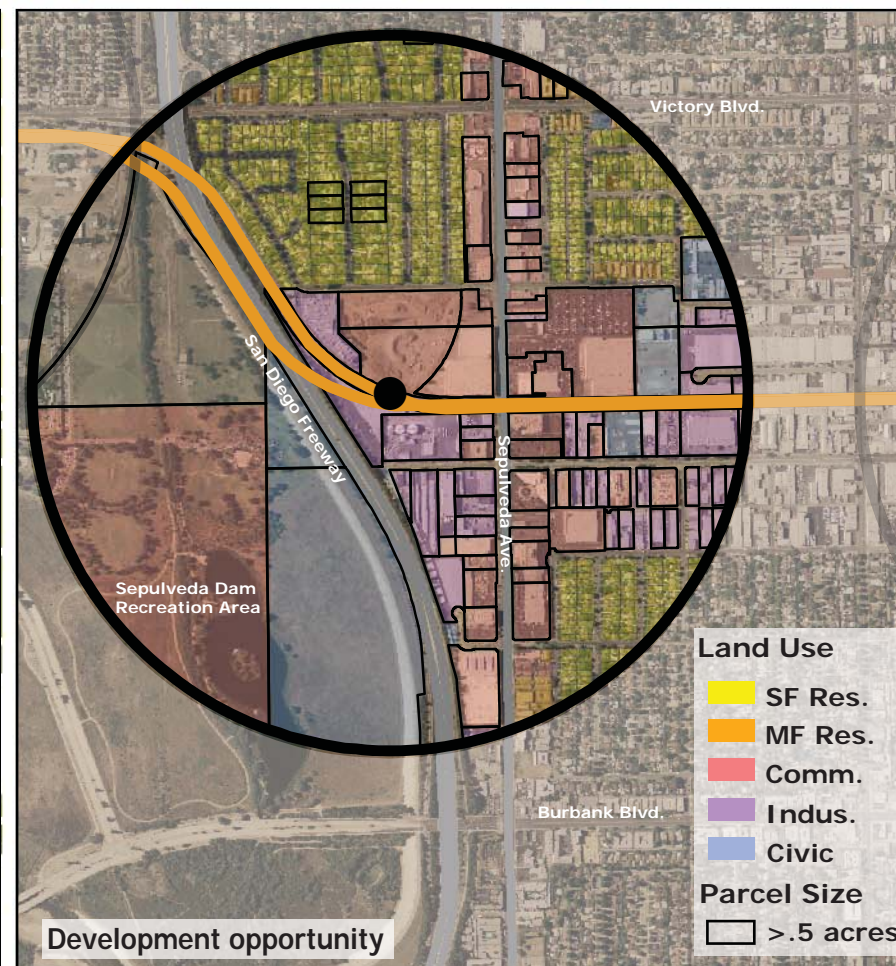
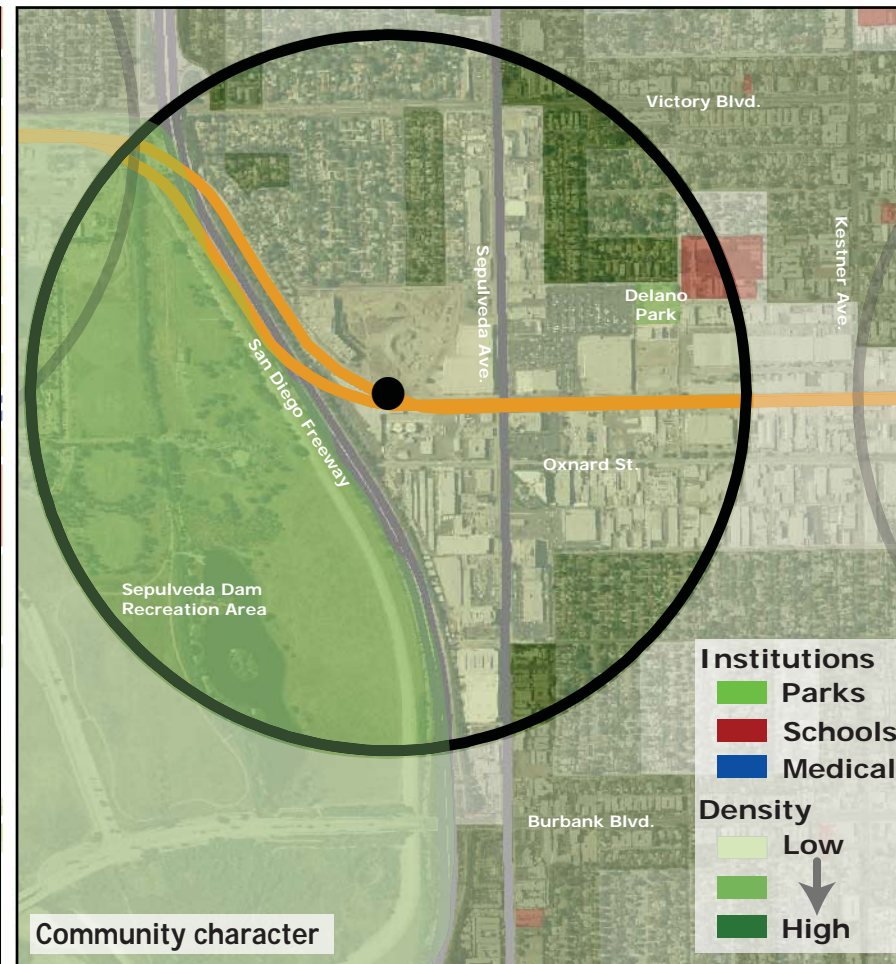
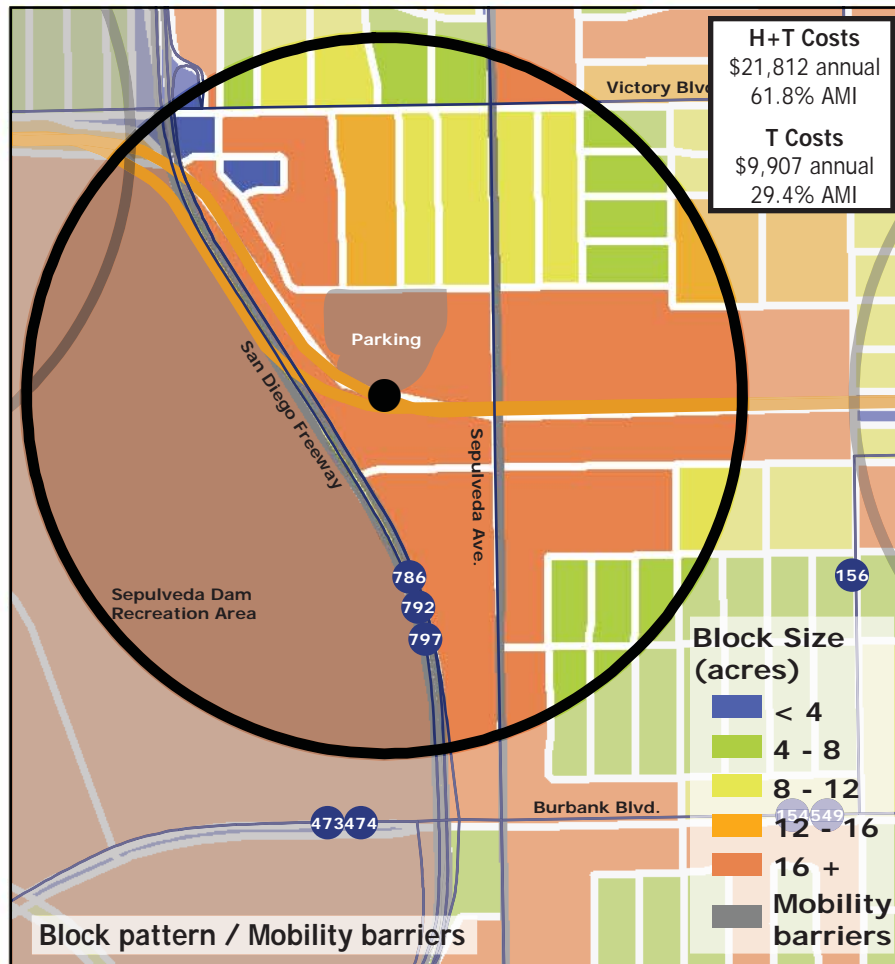
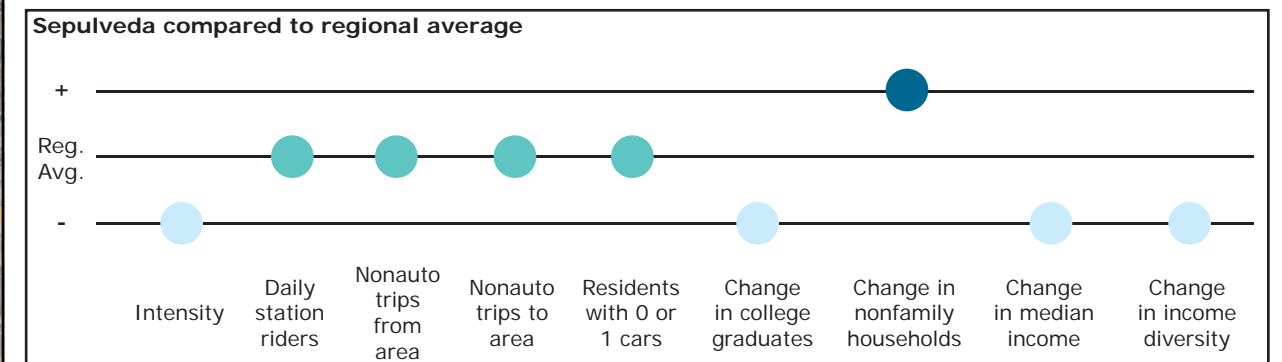


Los Angeles TOD Typology and Case Study Project

Sepulveda - Orange Line BRT

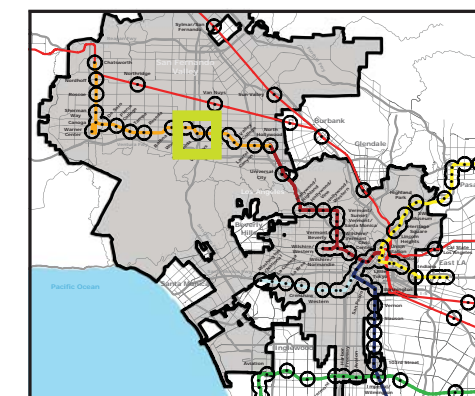
Neighborhood Type Neighborhood Center
Station Type Street Level, High corridor ridership
Neighborhood Change Becoming more low income
Development Opportunity High-moderate

Category	Screen	Value	Reads As
Neighborhood Type (Uses)	Use Mix	1.44 jobs/resident	Mixed-Use
	Intensity	10.37 persons/acre	Low
Access and Mobility	Daily station boardings	1,523 riders	Moderate
	Mobility barriers	freeway; parking	Auto-oriented
	Nonauto work trips from area	9.5%	Moderate
	Nonauto work trips to area	10.3%	Moderate
	Residents with 1 or 0 cars	54.0%	Moderate
Neighborhood Change	College graduates (1990-2000)	-16.0%	Rapid decrease
	Nonfamily households (1990-2000)	+14.6%	Rapid increase
	Median Income (1990-2000)	-14.0%	Decrease
	Income diversity (1990-2000)	-6.0%	Decrease
	Affordable Units (2009-2015)	0 units, 0% expiring	No change
Development Opportunity	Underutilized Land	70.0 acres	Few, large
	Avg. commercial & industrial parcel	6.66 acres	High



Legend

- Freeway
- Transit
- Station
- Orange Line BRT
- Bus line
- Half-mile radius



November 5, 2009,
Draft



Data sources: 1990 and 2000 Census SF3 Tables; USDA; City of Los Angeles; LA City Metro Transit Authority; County of Los Angeles Assessor's Office; HUD User; CTOD TOD database.