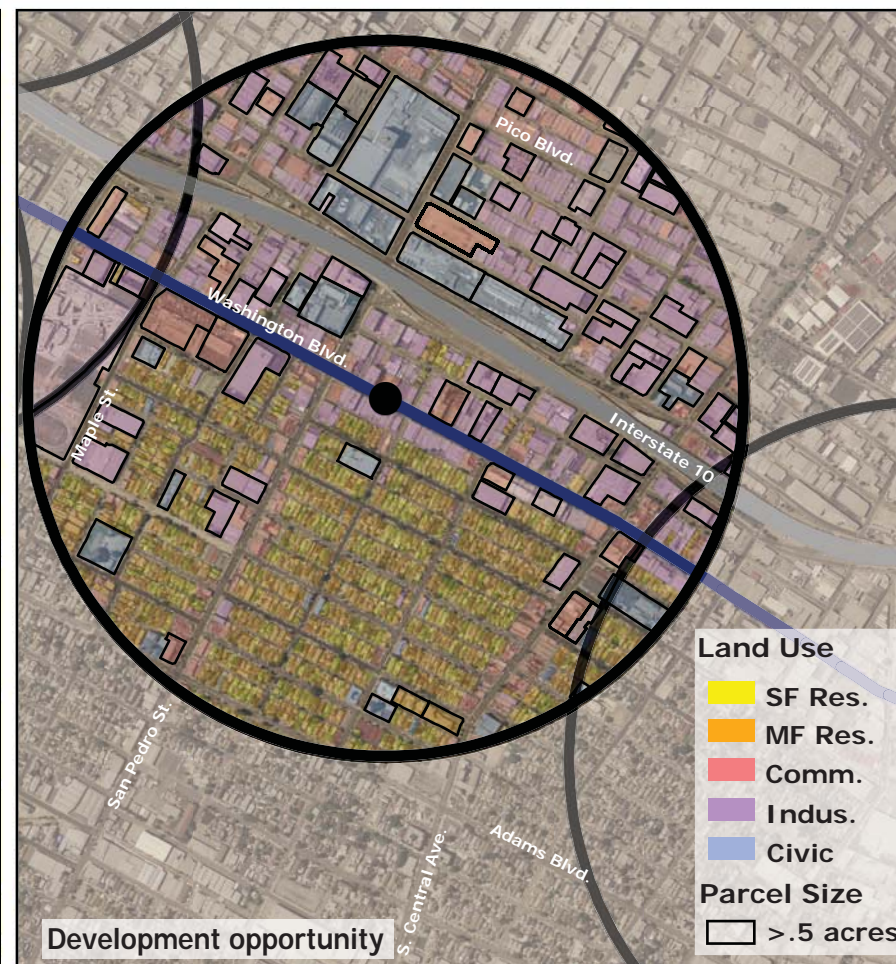
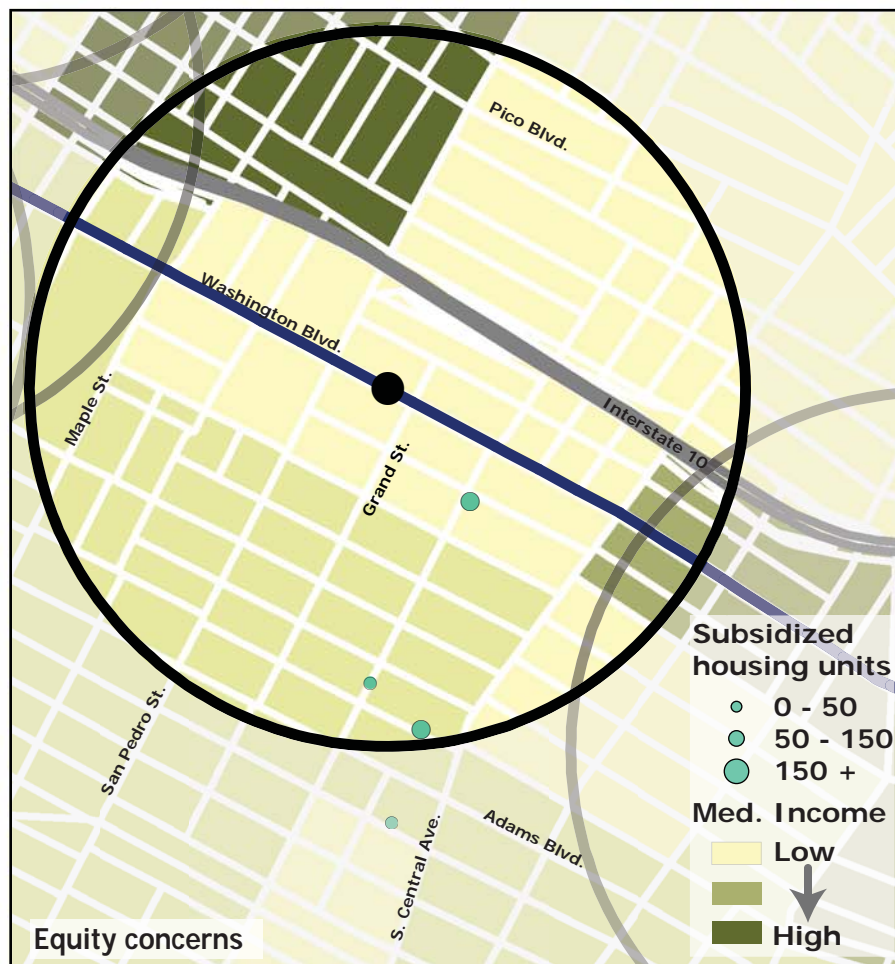
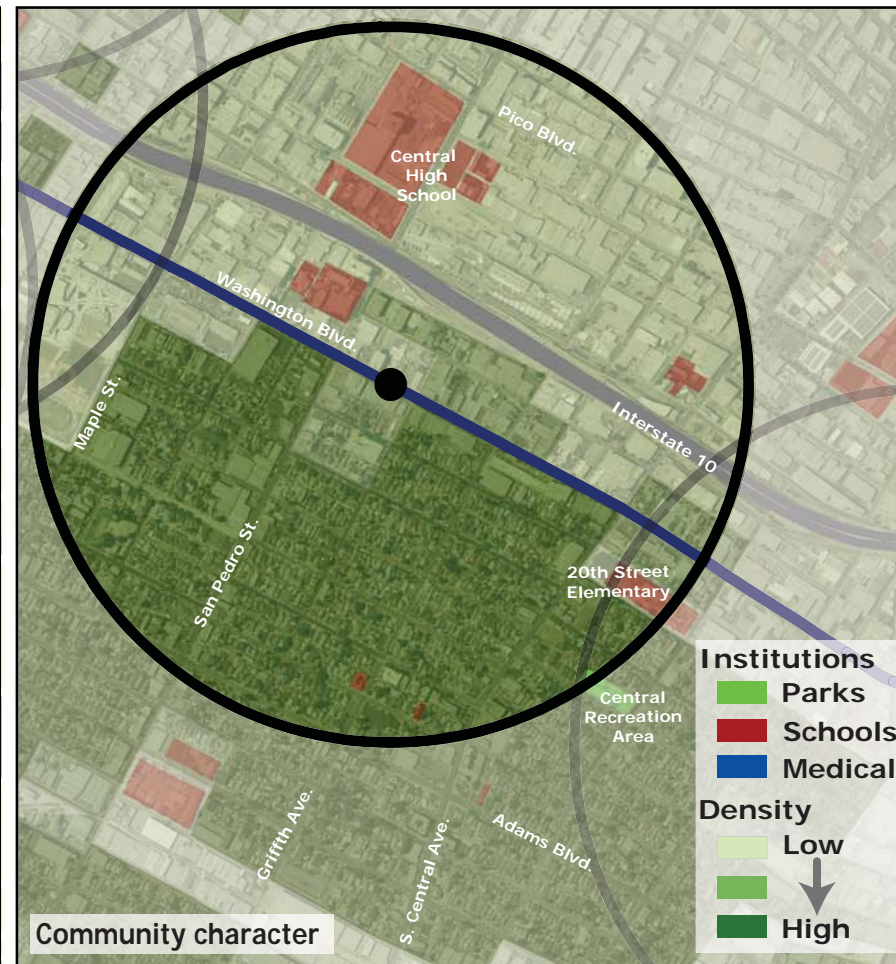
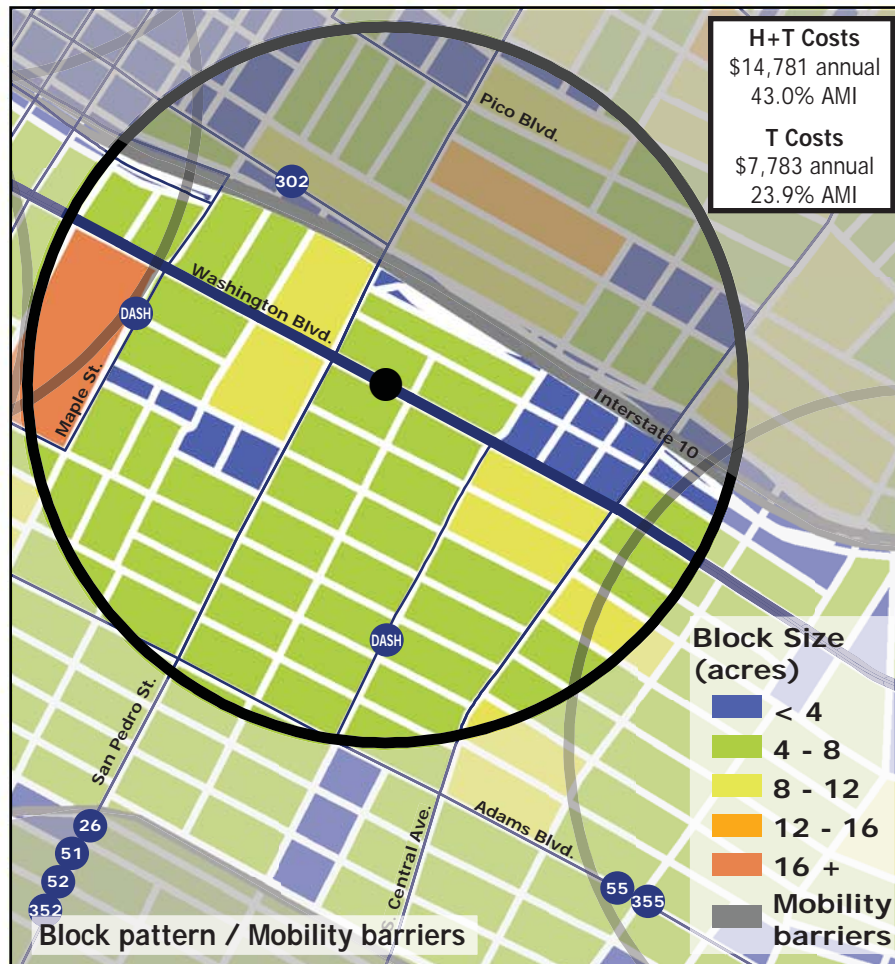
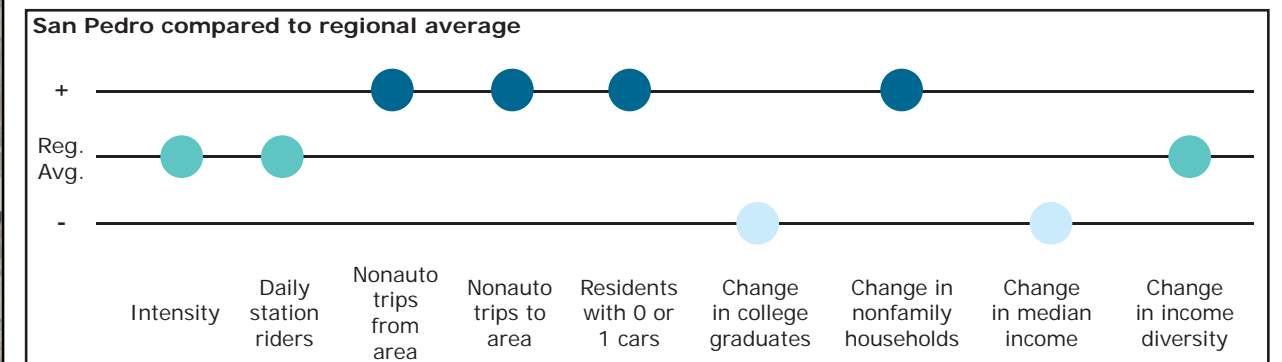


# Los Angeles TOD Typology and Case Study Project

## San Pedro - Blue Line

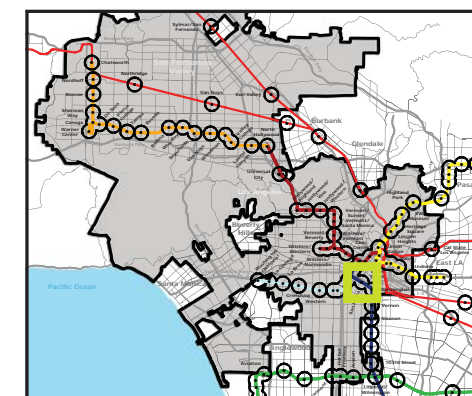
**Neighborhood Type** Mixed-Use Center  
**Station Type** Street level, Moderate corridor ridership  
**Neighborhood Change** Stable Mixed Income  
**Development Opportunity** High

Category	Screen	Value	Reads As
<b>Neighborhood Type (Uses)</b>	Use Mix	0.98 jobs/resident	Mixed-use
	Intensity	38.8 persons/acre	Moderate
<b>Access and Mobility</b>	Daily station boardings	2,023 riders	Moderate
	Mobility barriers	freeway proximity	Semi-walkable
	Nonauto work trips from area	41.1%	High
	Nonauto work trips to area	26.7%	High
	Residents with 1 or 0 cars	76.8%	High
<b>Neighborhood Change</b>	College graduates (1990-2000)	-8.3%	Decrease
	Nonfamily households (1990-2000)	+13.5%	Rapid increase
	Median Income (1990-2000)	-0.7%	Nominal change
	Income diversity (1990-2000)	-2.7%	Nominal change
	Affordable Units (2009-2015)	106 units, 0% expiring	No change
<b>Development Opportunity</b>	Underutilized Land	86 acres	Many, small
	Avg. commercial & industrial parcel	1.18 acres	High



### Legend

- Freeway
- Station
- Blue Line
- Bus line
- Half-mile radius



October 20, 2009,  
Draft

Data sources: 1990 and 2000 Census SF3 Tables; USDA; City of Los Angeles; LA City Metro Transit Authority; County of Los Angeles Assessor's Office; HUD User; CTOD TOD database.

