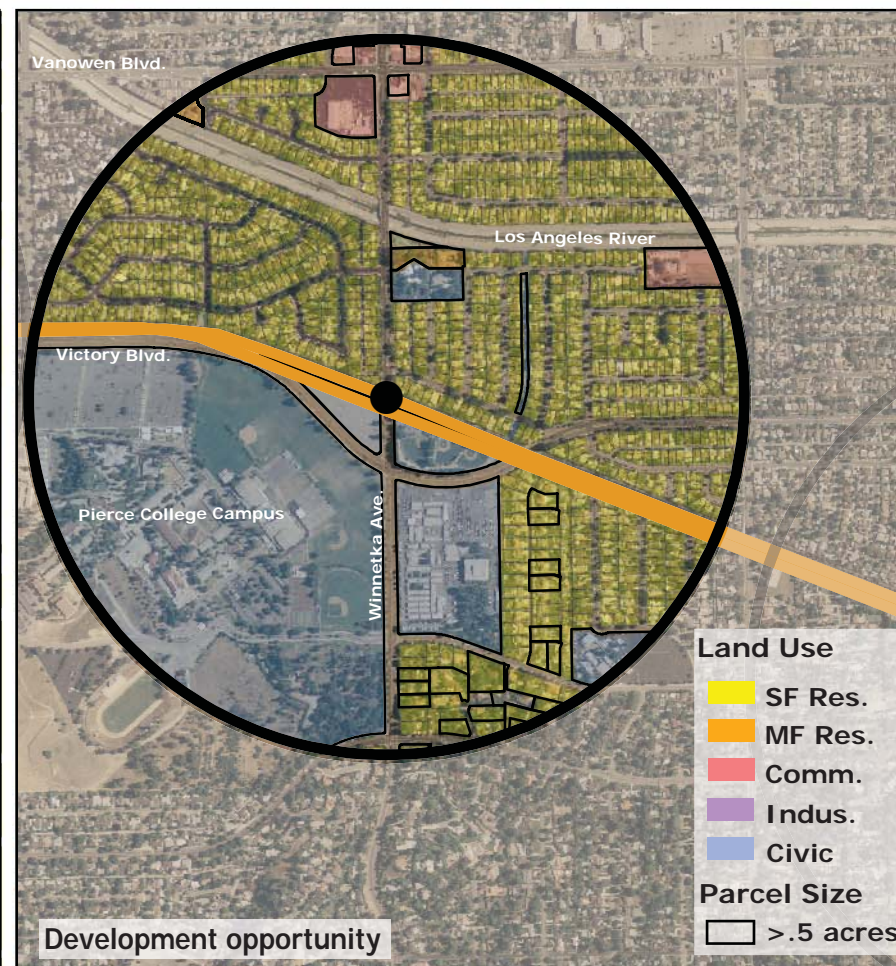
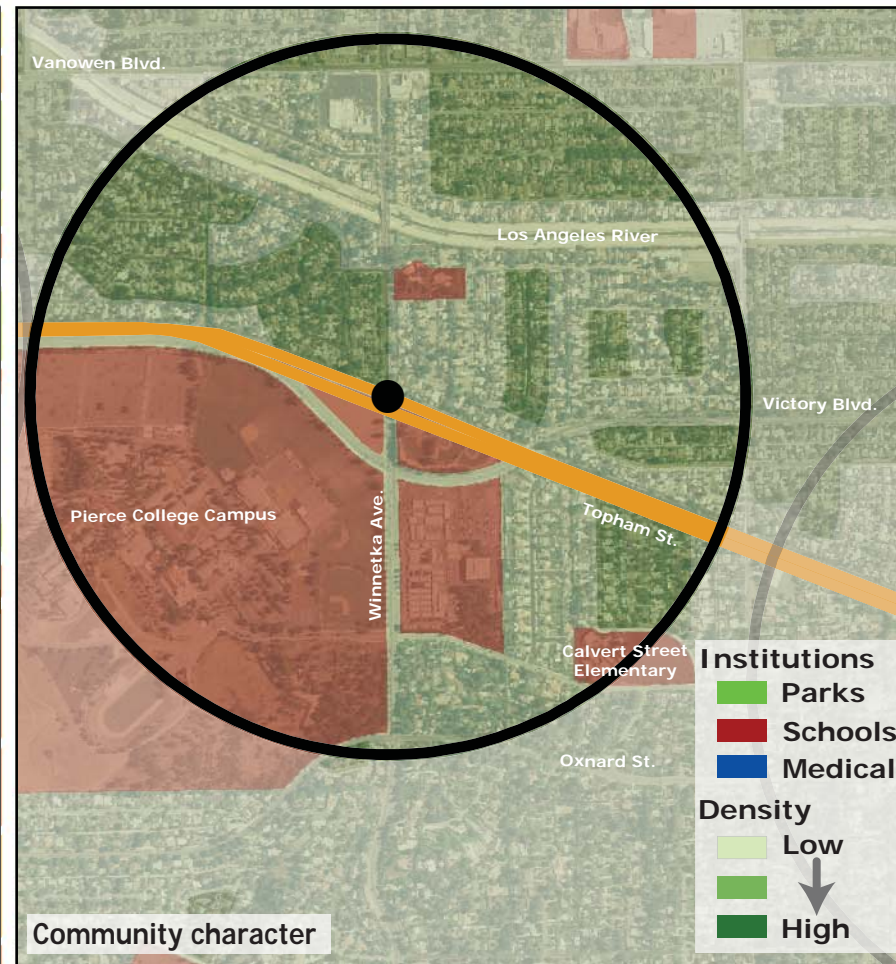
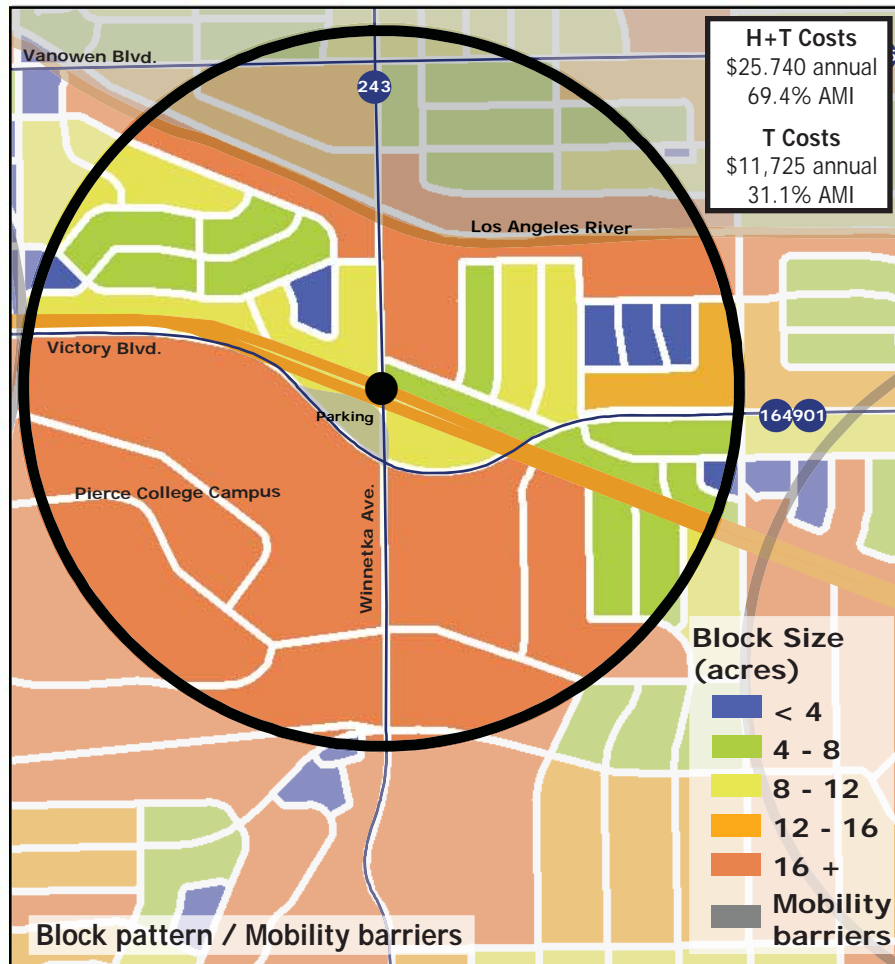
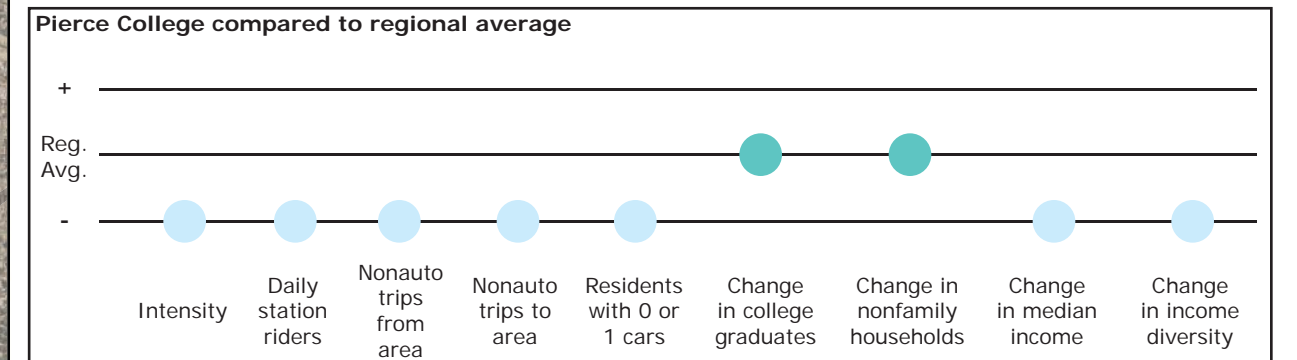


# Los Angeles TOD Typology and Case Study Project

## Pierce College - Orange Line BRT

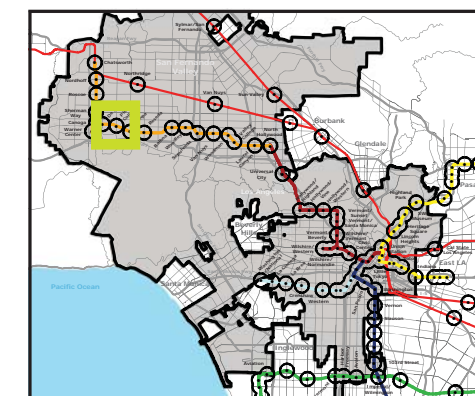
<b>Neighborhood Type</b>	Neighborhood Center
<b>Station Type</b>	Street Level, Moderate corridor ridership
<b>Neighborhood Change</b>	Becoming more high income
<b>Development Opportunity</b>	Low

Category	Screen	Value	Reads As
<b>Neighborhood Type (Uses)</b>	Use Mix	0.93 jobs/resident	Mixed-Use
	Intensity	12.44 persons/acre	Low
<b>Access and Mobility</b>	Daily station boardings	1,088 riders	Low
	Mobility barriers	block size	Semi-walkable
	Nonauto work trips from area	5.0%	Low
	Nonauto work trips to area	5.9%	Low
	Residents with 1 or 0 cars	41.1%	Low
<b>Neighborhood Change</b>	College graduates (1990-2000)	+8.1%	Nominal change
	Nonfamily households (1990-2000)	+0.7%	Nominal change
	Median Income (1990-2000)	-13.1%	Decrease
	Income diversity (1990-2000)	-10.5%	Decrease
	Affordable Units (2009-2015)	24 units, 100% expiring	High loss
<b>Development Opportunity</b>	Underutilized Land	5.9 acres	Few, clustered
	Avg. commercial & industrial parcel	1.06 acres	High



### Legend

- Freeway
- Station
- Orange Line BRT
- Bus line
- Half-mile radius



November 5, 2009,  
Draft