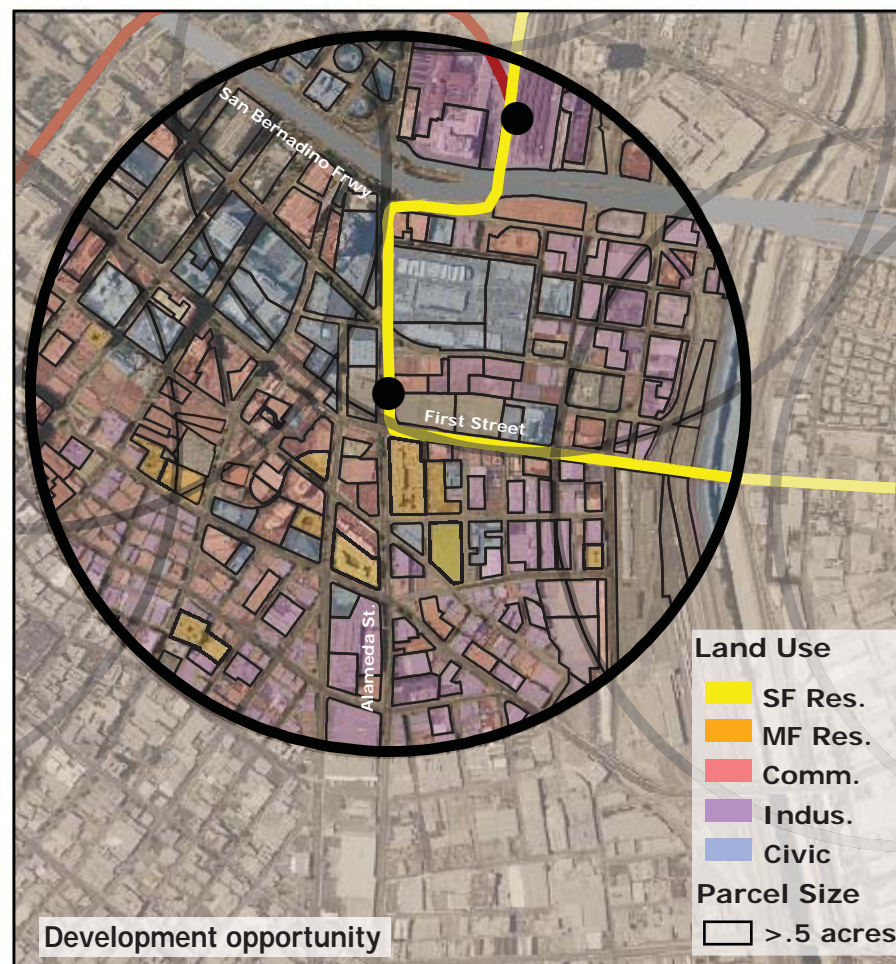
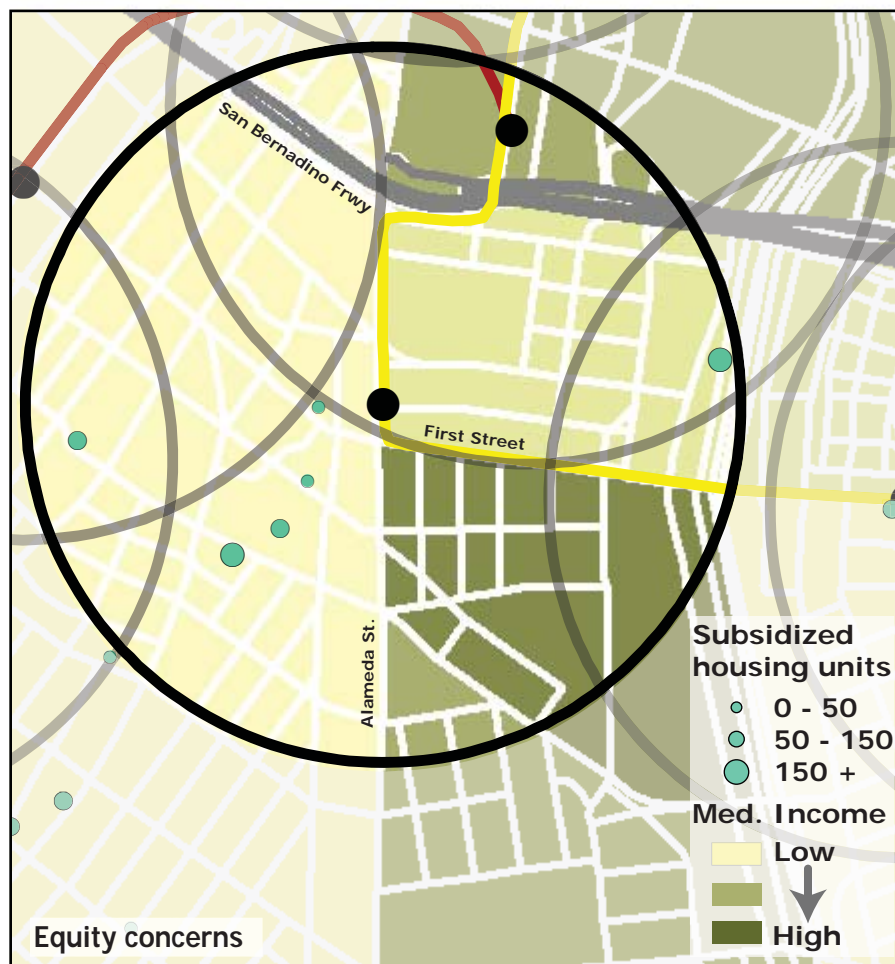
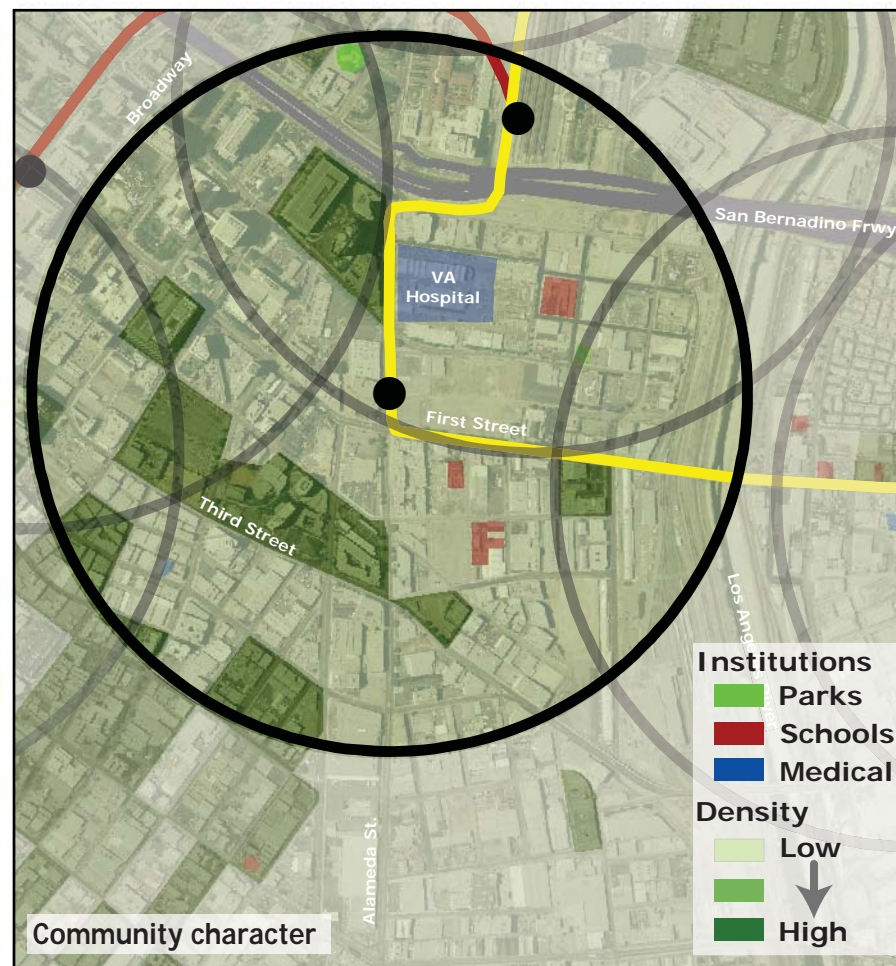
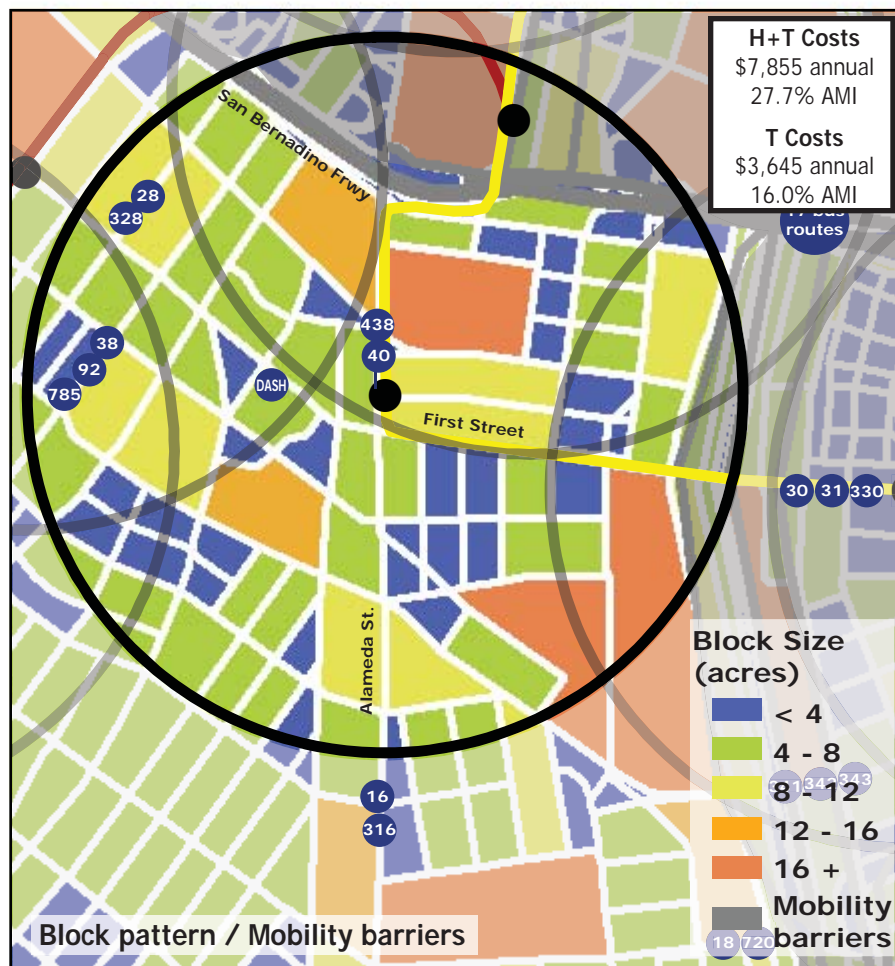
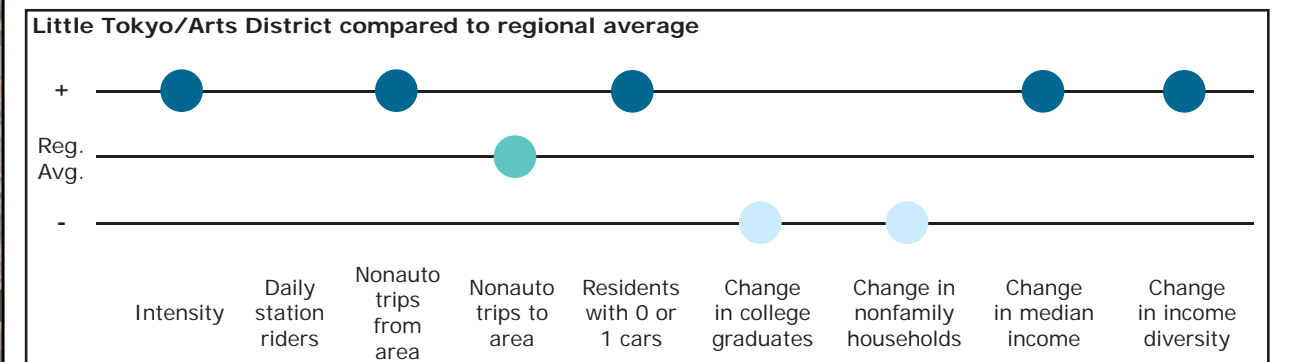


Los Angeles TOD Typology and Case Study Project Little Tokyo/Arts District - Gold Line Extension

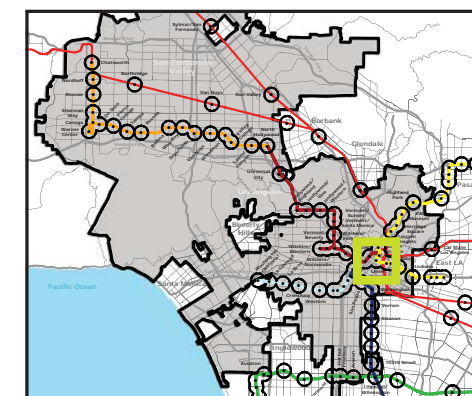
Neighborhood Type CBD/Special District
Station Type Street Level
Neighborhood Change Becoming more Mixed Income
Development Opportunity High-moderate

Category	Screen	Value	Reads As
Neighborhood Type (Uses)	Use Mix	9.87 jobs/resident	Employment Area
	Intensity	112.44 persons/acre	High
Access and Mobility	Daily station boardings	n/a	
	Mobility barriers	freeways; railyards	Semi-walkable
	Nonauto work trips from area	56.1%	High
	Nonauto work trips to area	18.5%	Moderate
	Residents with 1 or 0 cars	89.6%	High
Neighborhood Change	College graduates (1990-2000)	-15.4%	Rapid decrease
	Nonfamily households (1990-2000)	-12.4%	Rapid decrease
	Median Income (1990-2000)	+12.8%	Rapid increase
	Income diversity (1990-2000)	+32.5%	Rapid increase
	Affordable Units (2009-2015)	427 units, 23% expiring	Low loss
Development Opportunity	Underutilized Land	104.9 acres	Many, scattered
	Avg. commercial & industrial parcel	0.47 acres	Low



Legend

- Freeway
- Station
- Gold Line
- Bus line
- Half-mile radius



November 5, 2009,
Draft



Data sources: 1990 and 2000 Census SF3 Tables; USDA; City of Los Angeles; LA City Metro Transit Authority; County of Los Angeles Assessor's Office; HUD User; CTOD TOD database.