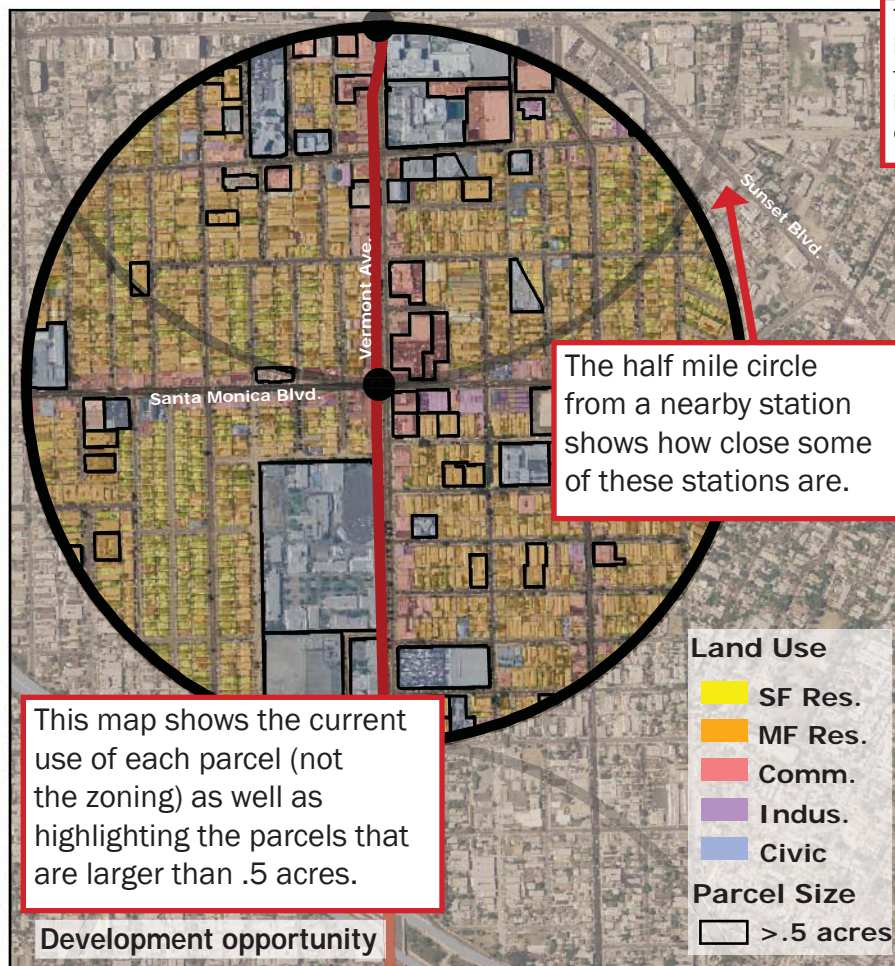
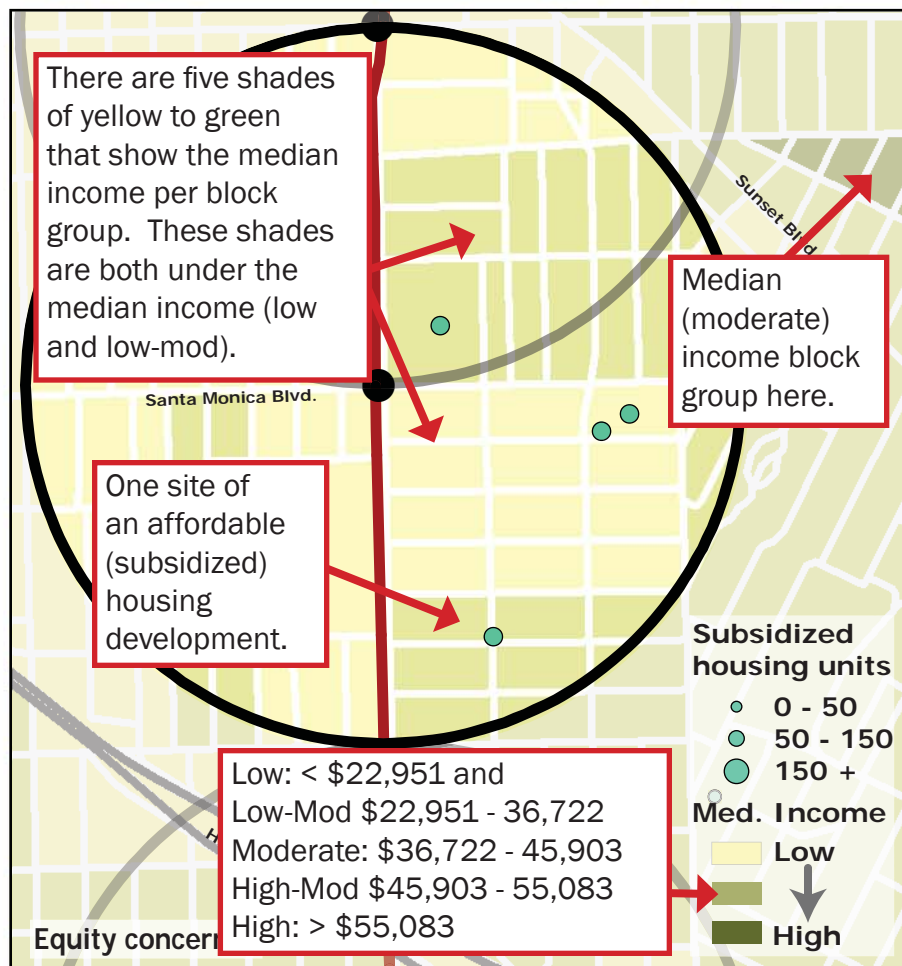
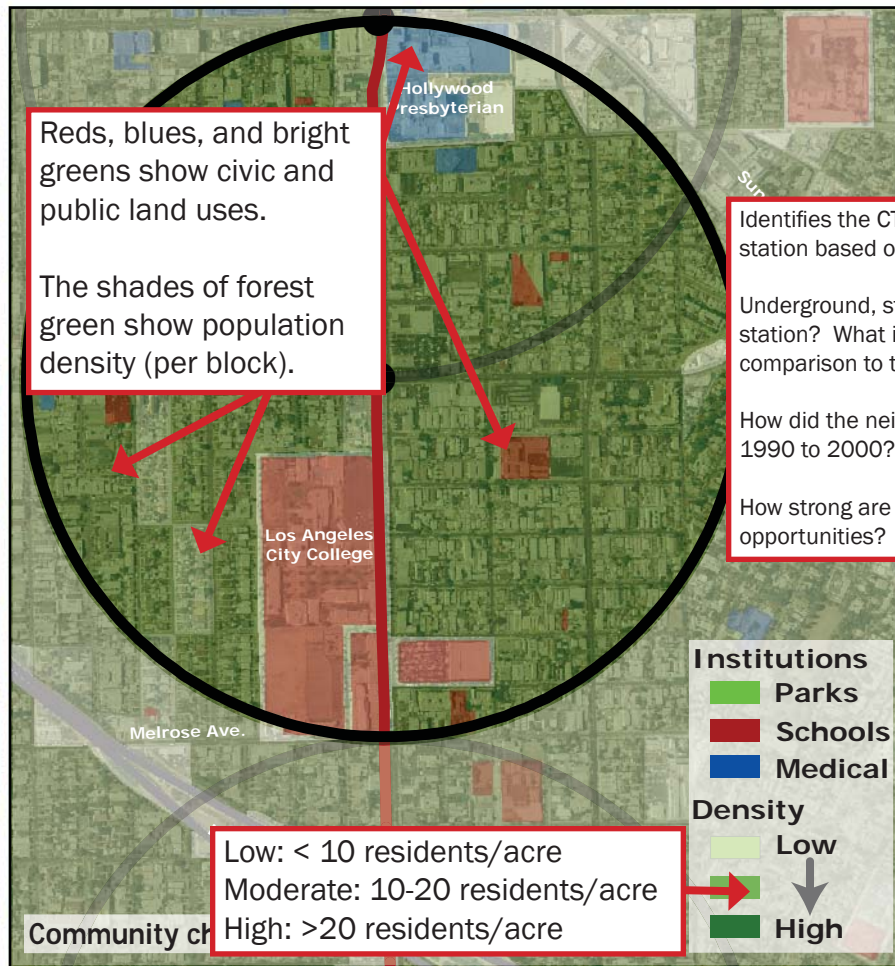
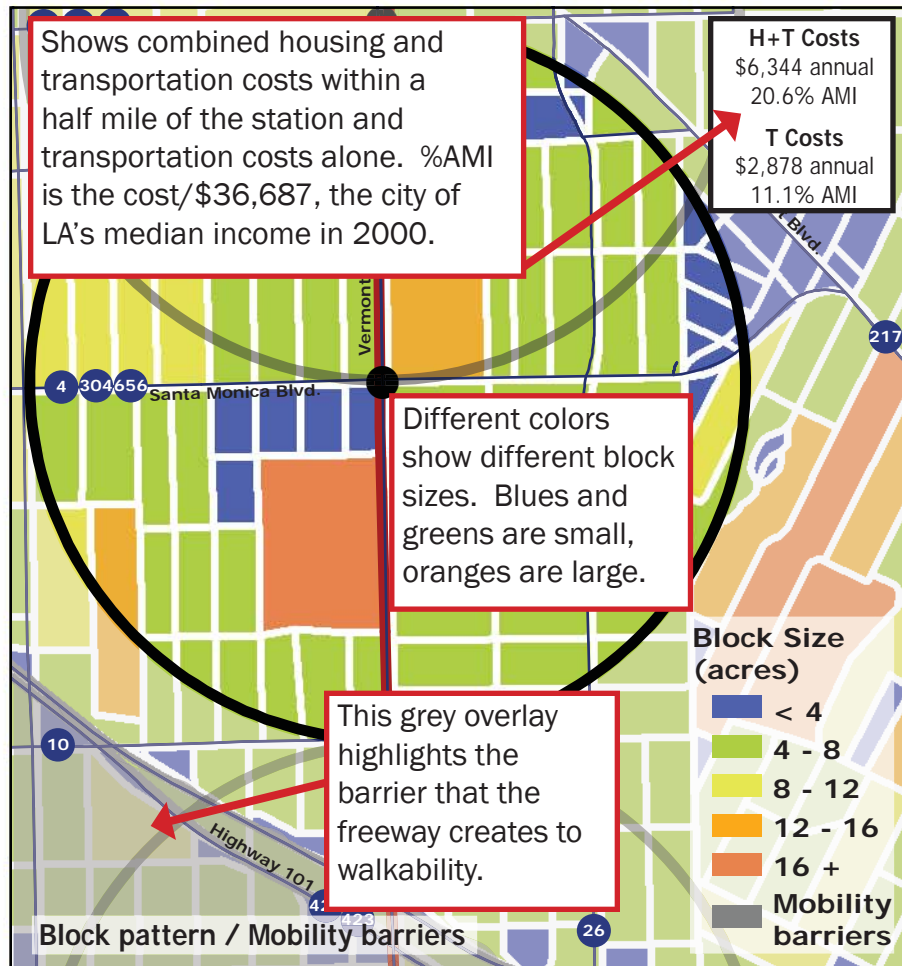


Los Angeles TOD Typology and Case Study Project



KEY

Neighborhood Type: CBD/Special District
 Station Type: Underground, Moderate
 Neighborhood Change: Gentrifying
 Development Opportunity: Moderate

Screen	Explanation	Low	Moderate	High
Use Mix	# of jobs / # of residents	< .5	.5-1.5	>1.5
Intensity	# jobs + # residents / total acres	< 14.4	14.4-28.8	>28.8
Daily station boardings		< 1255	1255-3100	> 3100
Mobility barriers	qualitative assessment of block size, freeway proximity, railroads, other barriers to walkability			
Nonauto work trips from area	residents going to work	< 8.1%	8.1-20.4%	> 20.4%
Nonauto work trips to area	workers coming to station area			
Residents with 1 or 0 cars		< 45.4%	45.4 to 66%	> 66%
College graduates (1990-2000)		Rapid dec.: < -10%; Dec.: -10% to 0; Nominal change: 0 to 19.5% (19.5%=regional change); Inc.: 19.5-30%; Rapid inc.: >30%		
Nonfamily households (1990-2000)		RD: < -10%; D: -10 to -2.5%; NC: -2.5 to 2.5%; (regional change=+2.5%) I: 2.5 to 10%; RI: > 10%		
Median Income (1990-2000)		RD: < -21.5%; D: 21.5 to -10%; NC: -10% to 0 (Regional change=-10%); I: 0 to 15%; RI: > 15%		
Income diversity (1990-2000)		RD: -15%; D: -15 to -5.62%; NC: -5.62 to 0% (regional change=-5.62%); I: 0 to 5%; RI: > 5%		
Affordable units (2009-2015)	Number of unexpired subsidized (LIHTC, Sec 8, 202, Public, Hope VI) housing units, and % expiring by 2015	Low: < 30%; Moderate: 30-85%; High: 85-100%		
Underutilized parcels		High: >17% land area Moderate: 6%-17% land area Low: < 17% land area		
Avg. commercial & industrial parcel		Large: > 1 acres Medium: 0.5 - 1 Small: < 0.5 acres		

The specific indicators in this chart map to the more generalized information at the top of the page.

Station name compared to regional average

+
Reg. Avg.
-

Intensity, Daily station exits, Nonauto trips from area, Nonauto trips to area, Residents with 0 or 1 cars, Change in college graduates

Shows how the station compares to the region, using the same indicators as in the chart above.

Ex. Vermont and Sunset's station area has more residents commuting through walking, biking or public transit than the region as a whole.