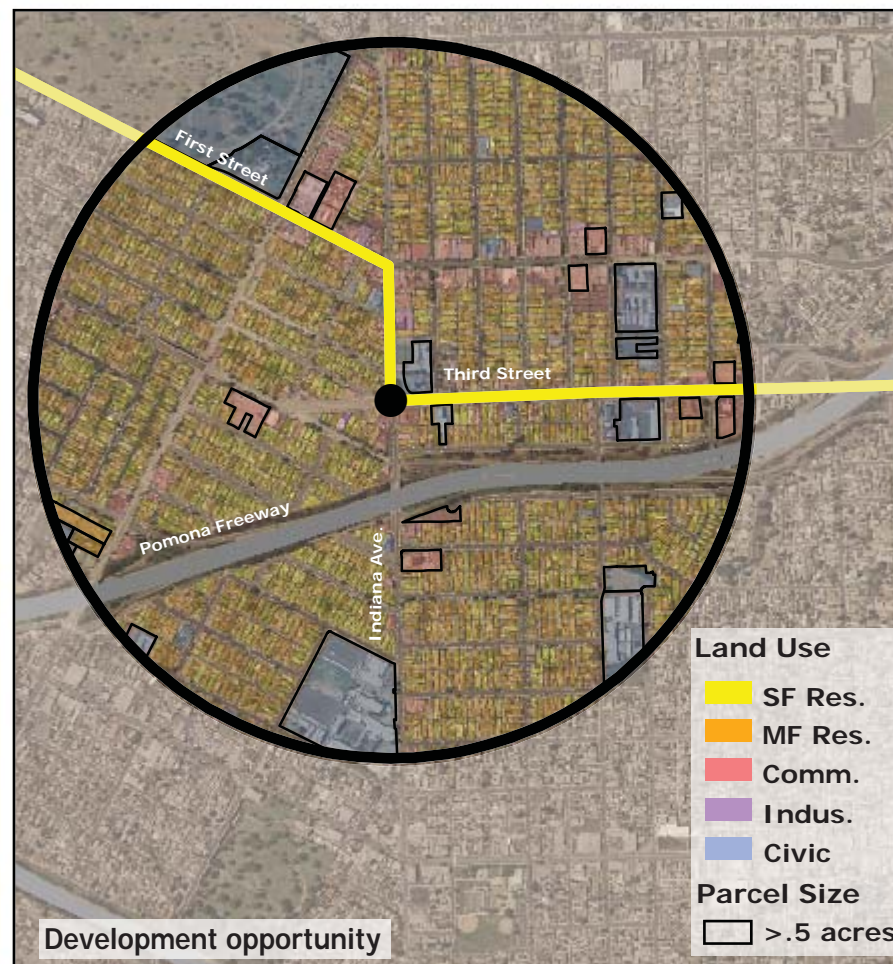
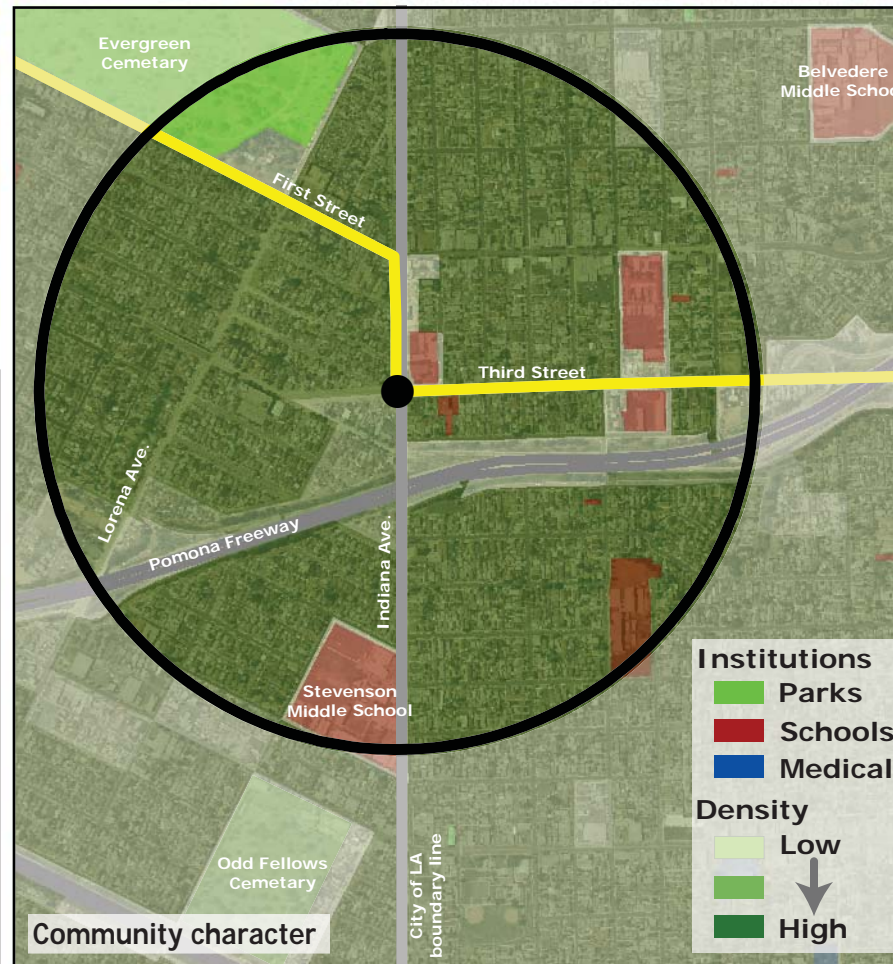
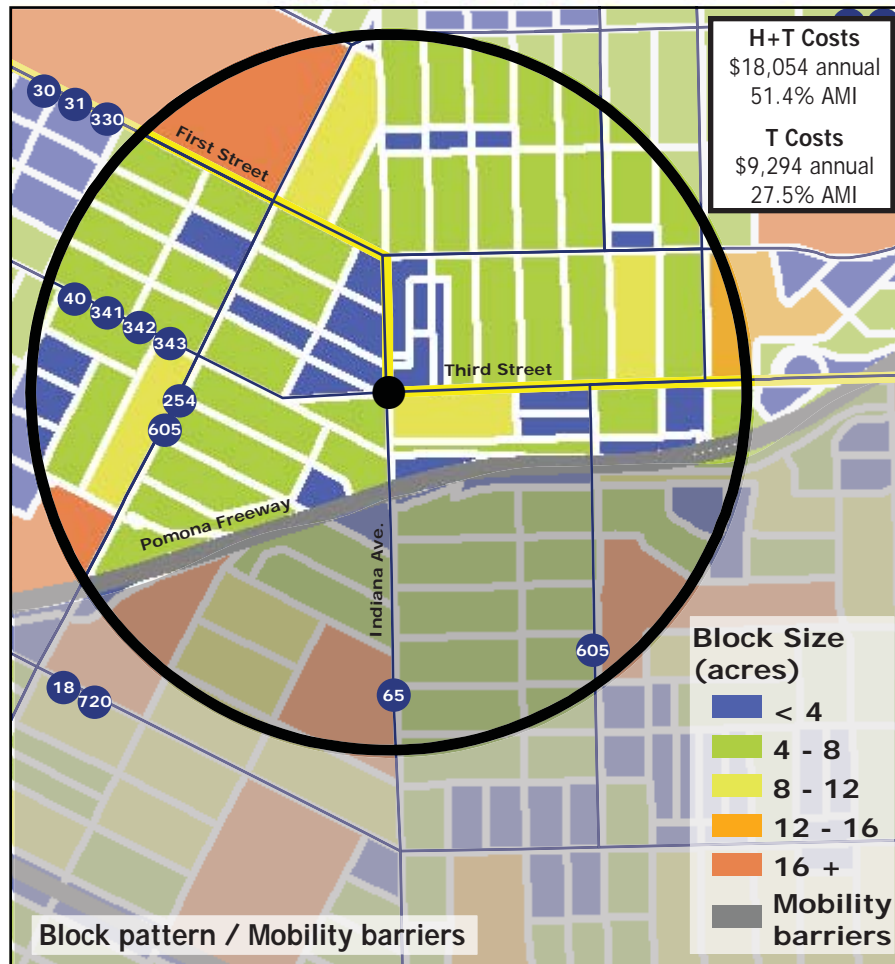
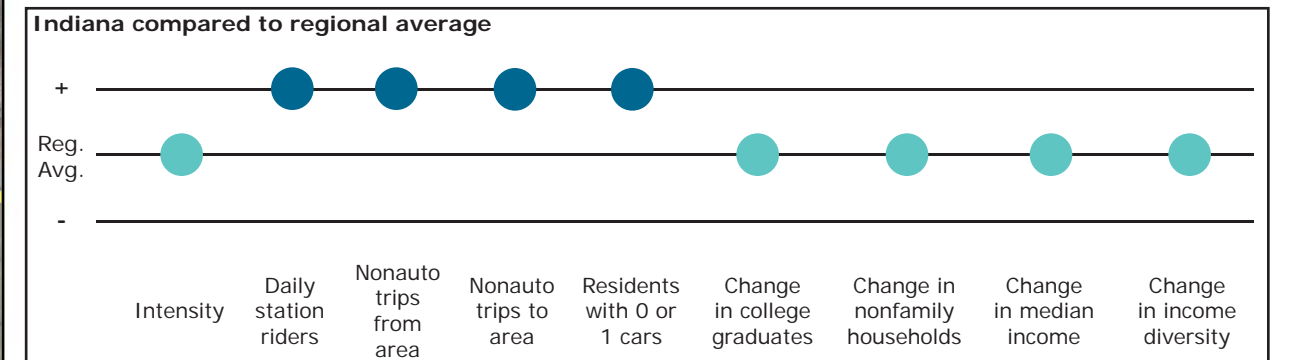


Los Angeles TOD Typology and Case Study Project

Indiana - Gold Line Eastside Extension

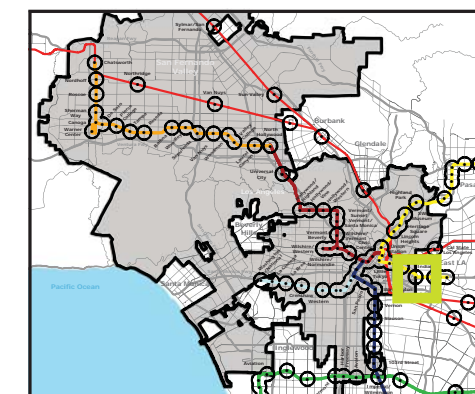
Neighborhood Type Transit Neighborhood
Station Type Street Level
Neighborhood Change Polarizing
Development Opportunity Low

Category	Screen	Value	Reads As
Neighborhood Type (Uses)	Use Mix	0.08 jobs/resident	Residential
	Intensity	34.14 persons/acre	Moderate
Access and Mobility	Daily station boardings	n/a	
	Mobility barriers	2 (freeway proximity)	Semi-walkable
	Nonauto work trips from area	23.1%	High
	Nonauto work trips to area	23.4%	High
	Residents with 1 or 0 cars	61.3%	Moderate
Neighborhood Change from 1990 to 2000	College graduates (1990-2000)	+1.5%	Nominal change
	Nonfamily households (1990-2000)	-1.3%	Nominal change
	Median Income (1990-2000)	-5.9%	Nominal change
	Income diversity (1990-2000)	-4.5%	Nominal change
	Affordable Units (2009-2015)	47 units, 0% expiring	No loss
Development Opportunity	Underutilized Land	23.3 acres	Few, clustered
	Avg. commercial & industrial parcel	0.21 acres	Low



Legend

- Freeway
- Station
- Gold Line
- Bus line
- Half-mile radius



November 5, 2009,
Draft