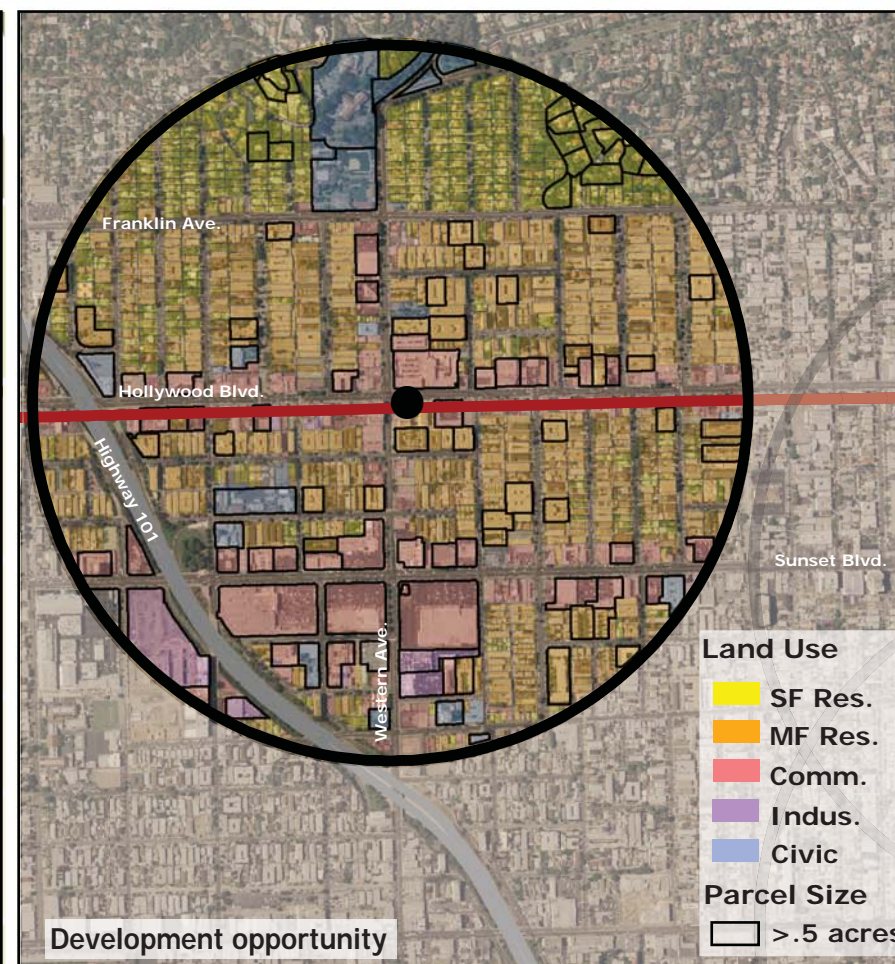
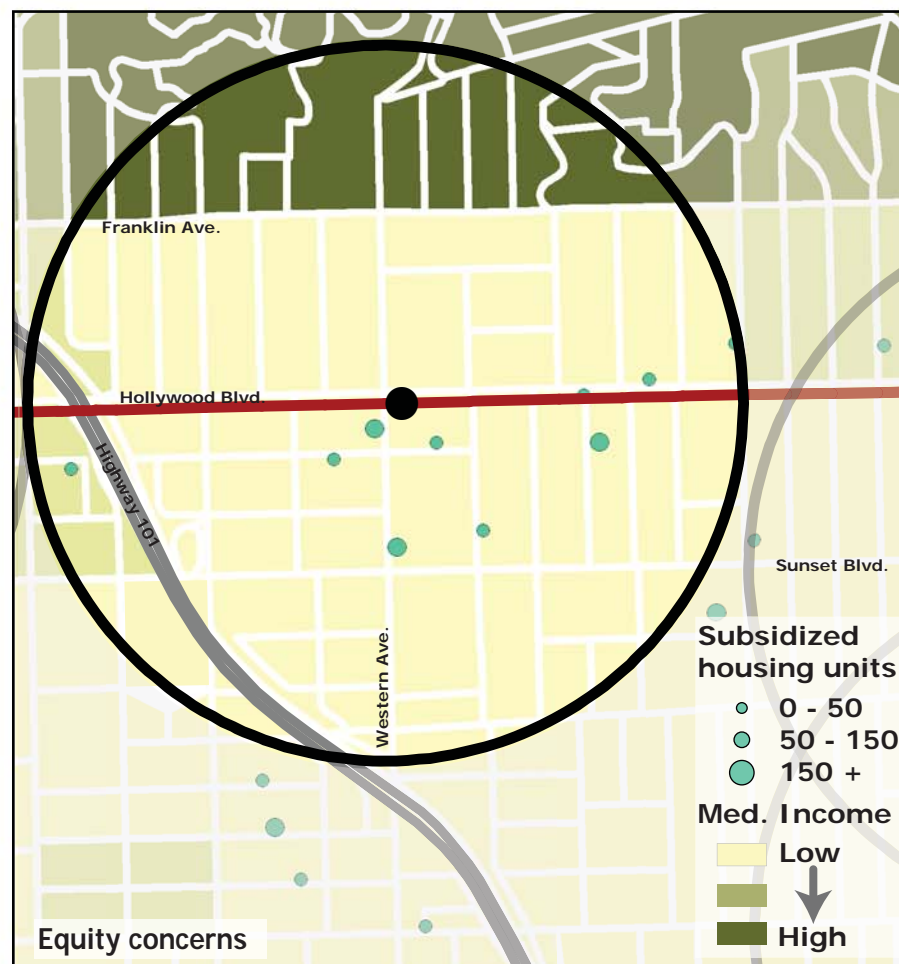
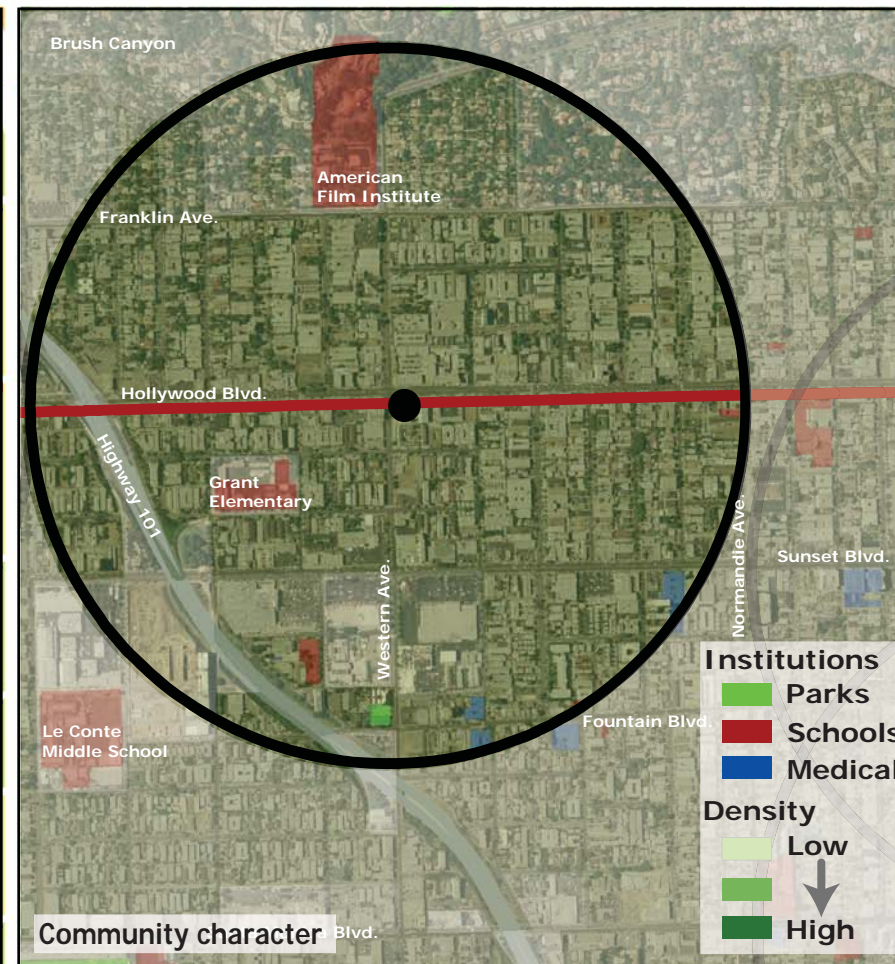
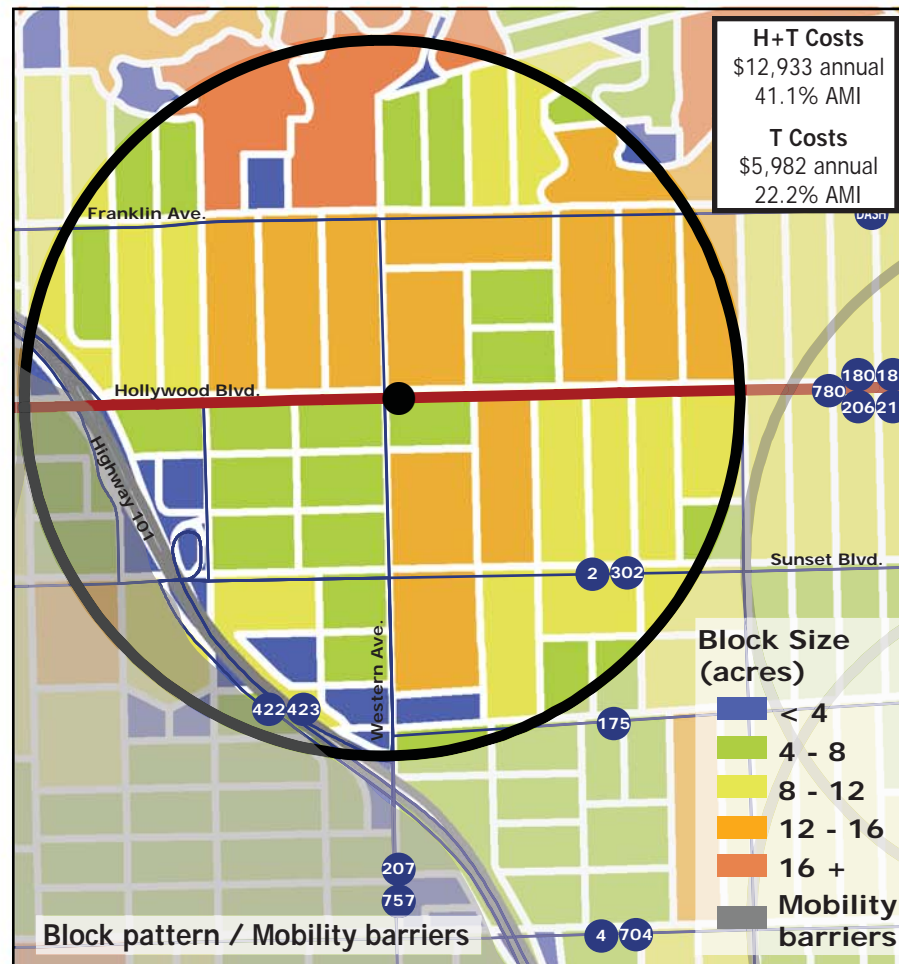
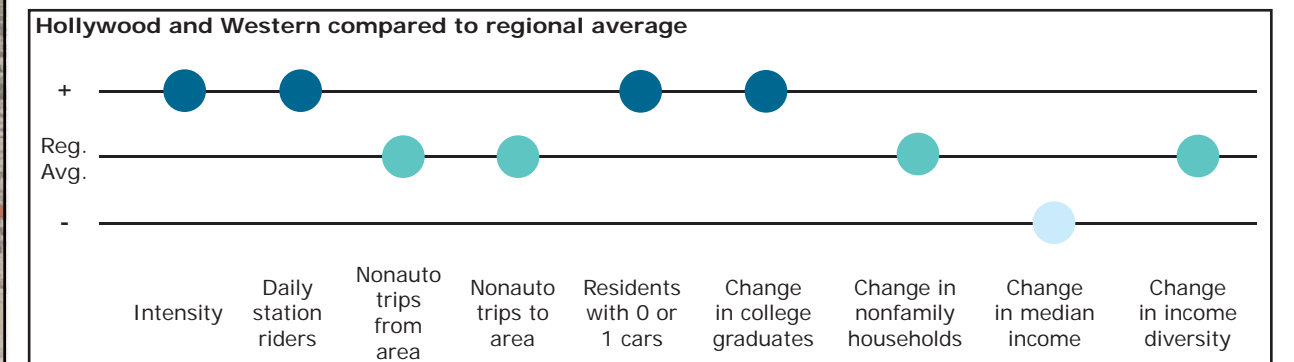


Los Angeles TOD Typology and Case Study Project

Hollywood and Western - Red Line

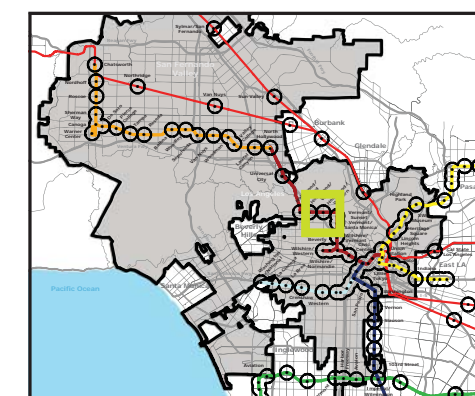
Neighborhood Type Urban Neighborhood
Station Type Underground, Low corridor ridership
Neighborhood Change Potential for gentrification
Development Opportunity Moderate

Category	Screen	Value	Reads As
Neighborhood Type (Uses)	Use Mix	0.29 jobs/resident	Residential
	Intensity	28.3 persons/acre	High
Access and Mobility	Daily station boardings	9,572 riders	High
	Mobility barriers	freeway proximity	Semi-walkable
	Nonauto work trips from area	17.3%	Moderate
	Nonauto work trips to area	9.0%	Moderate
	Residents with 1 or 0 cars	73%	High
Neighborhood Change	College graduates (1990-2000)	+36.7%	Rapid Increase
	Nonfamily households (1990-2000)	-1.9%	Nominal change
	Median Income (1990-2000)	-11%	Decrease
	Income diversity (1990-2000)	-5.3%	Nominal change
	Affordable Units (2009-2015)	215 units, 36% expiring	Moderate loss
Development Opportunity	Underutilized Land	69.0 acres	Some, clustered
	Avg. commercial & industrial parcel	0.53 acres	Moderate



Legend

- Freeway
- Station
- Subway
- Bus line
- Half-mile radius



October 20, 2009,
Draft

Data sources: 1990 and 2000 Census SF3 Tables; USDA; City of Los Angeles; LA City Metro Transit Authority; County of Los Angeles Assessor's Office; HUD User; CTOD TOD database.