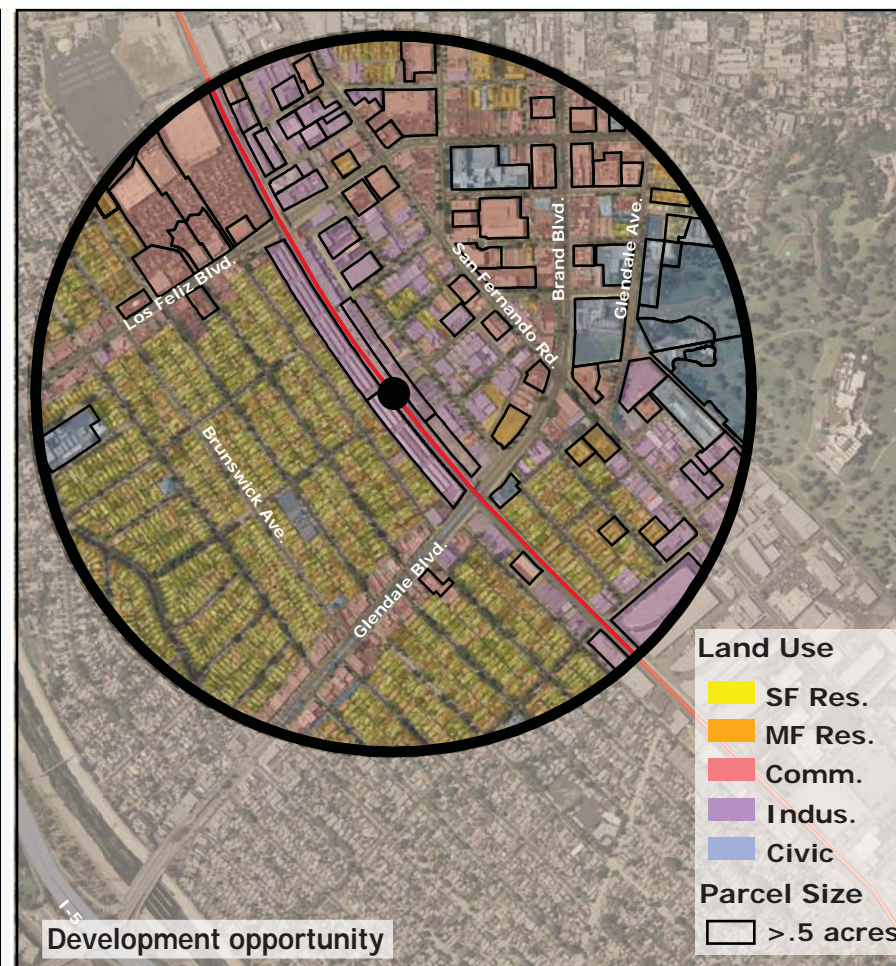
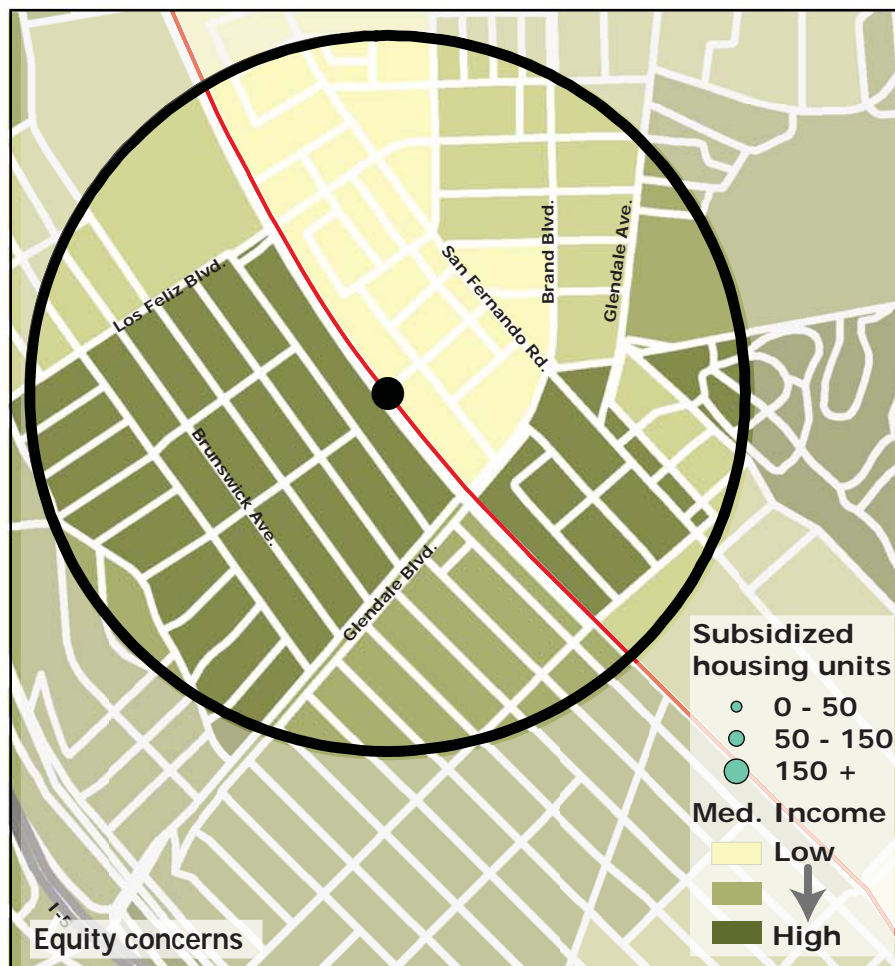
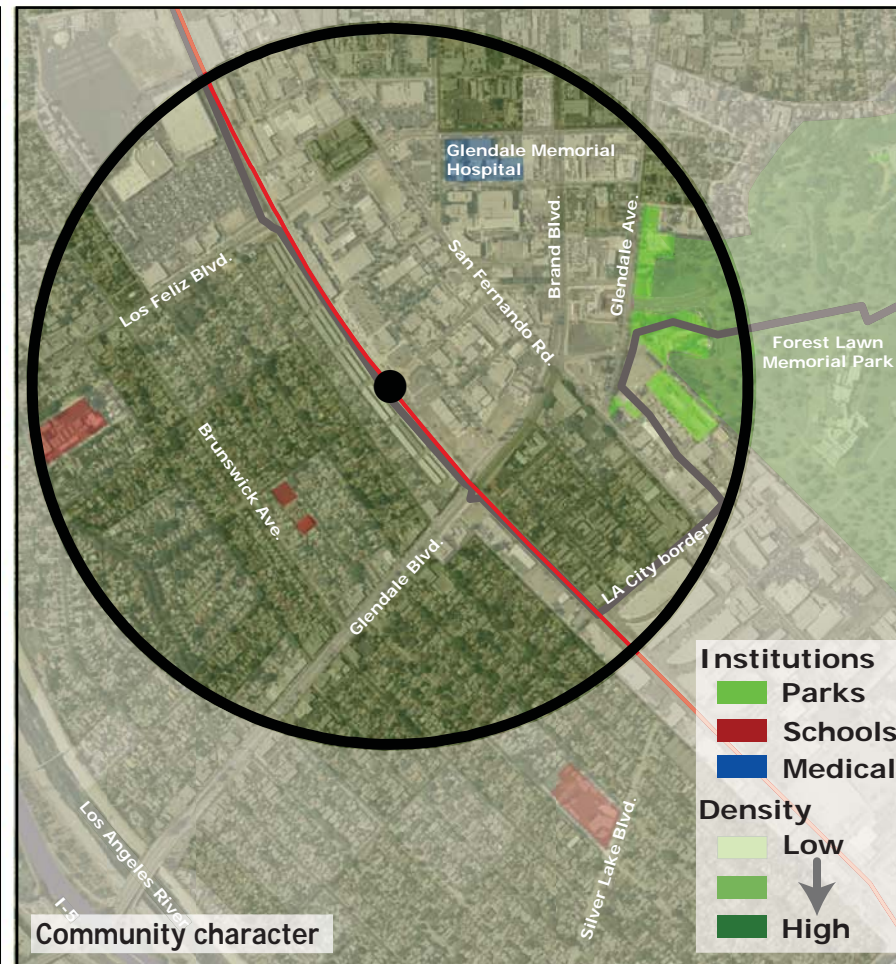
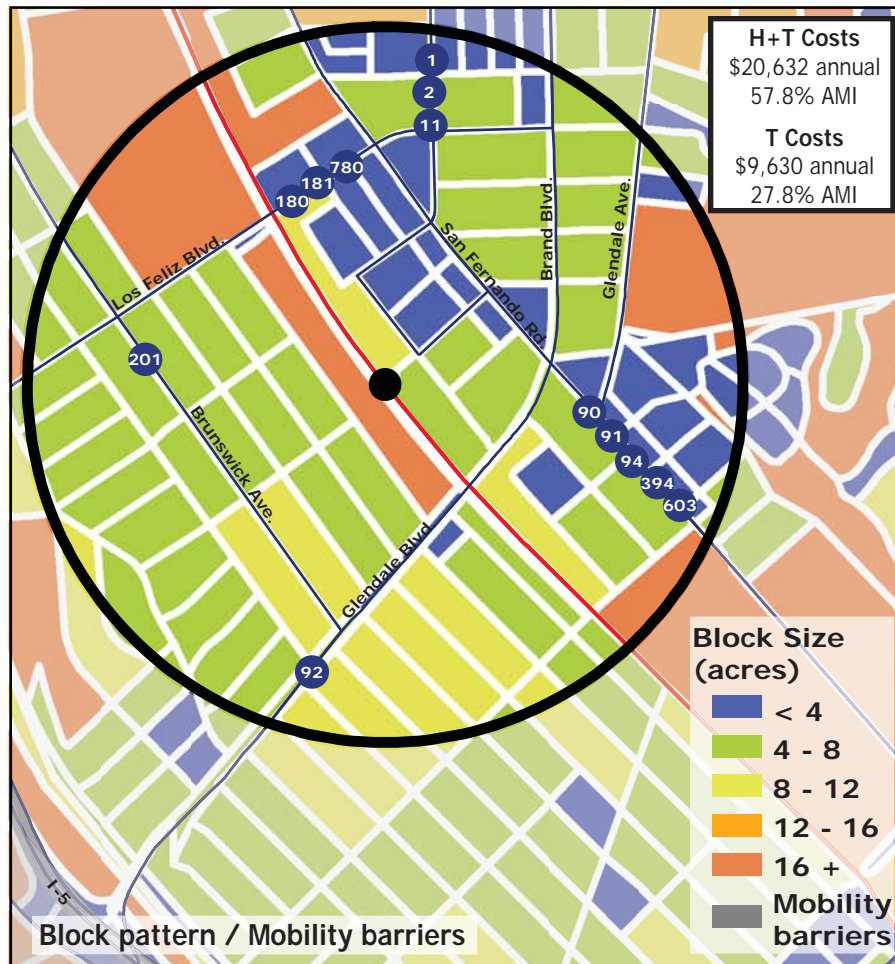
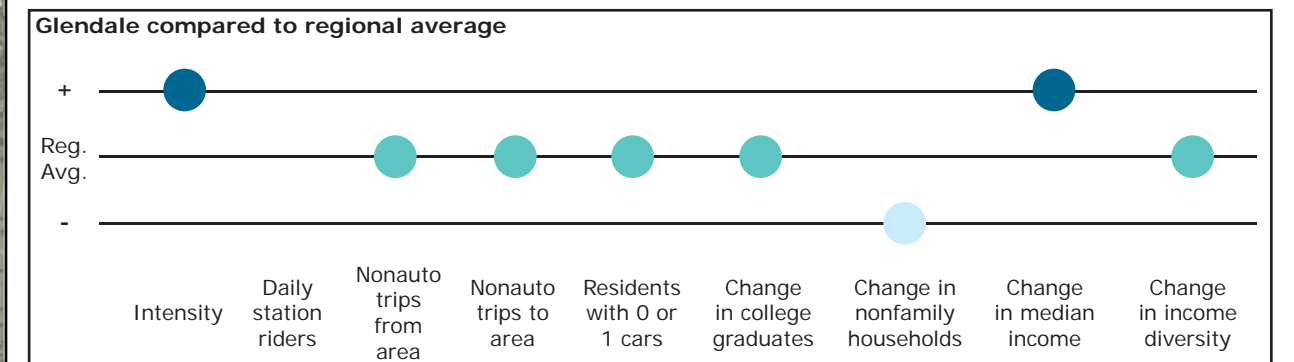


# Los Angeles TOD Typology and Case Study Project

## Glendale - Metrolink

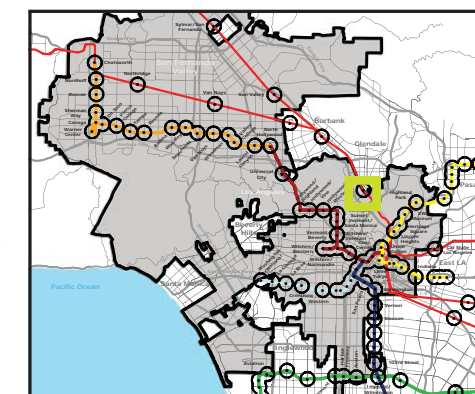
**Neighborhood Type** CBD/Special District  
**Station Type** Street level  
**Neighborhood Change** Becoming more high income  
**Development Opportunity** Moderate

Category	Screen	Value	Reads As
<b>Neighborhood Type (Uses)</b>	Use Mix	3.01 jobs/resident	Employment Area
	Intensity	53.5 persons/acre	High
<b>Access and Mobility</b>	Daily station boardings	n/a	
	Mobility barriers	none	Walkable
	Nonauto work trips from area	13.5%	Moderate
	Nonauto work trips to area	12.6%	Moderate
	Residents with 1 or 0 cars	52.7%	Moderate
<b>Neighborhood Change</b>	College graduates (1990-2000)	-15.0%	Nominal change
	Nonfamily households (1990-2000)	-16.4%	Rapid decrease
	Median Income (1990-2000)	+4.4%	Increase
	Income diversity (1990-2000)	-5.1%	Nominal change
	Affordable Units (2009-2015)	0 units, 0% expiring	No change
<b>Development Opportunity</b>	Underutilized Land	107 acres	Small, clustered
	Avg. commercial & industrial parcel	0.43 acres	Low



### Legend

- Freeway
- Transit
- Station
- Metrolink Rail Line
- Bus line
- Half-mile radius



October 20, 2009,  
Draft

Data sources: 1990 and 2000 Census SF3 Tables; USDA; City of Los Angeles; LA City Metro Transit Authority; County of Los Angeles Assessor's Office; HUD User; CTOD TOD database.