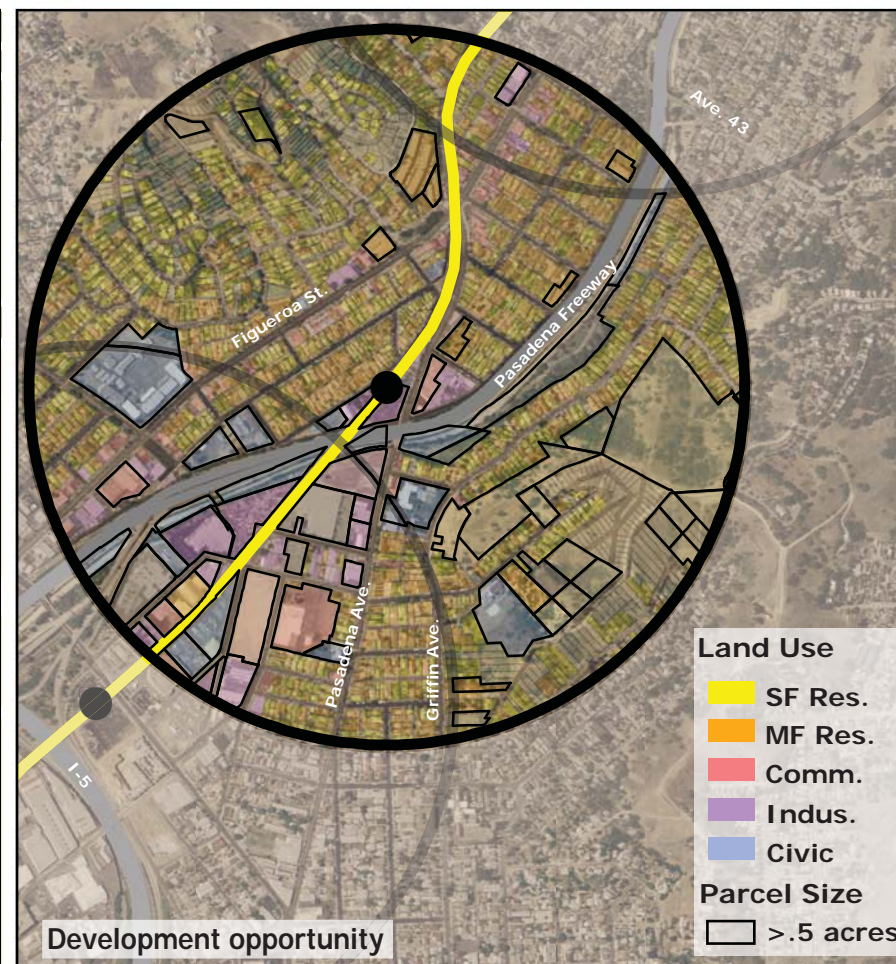
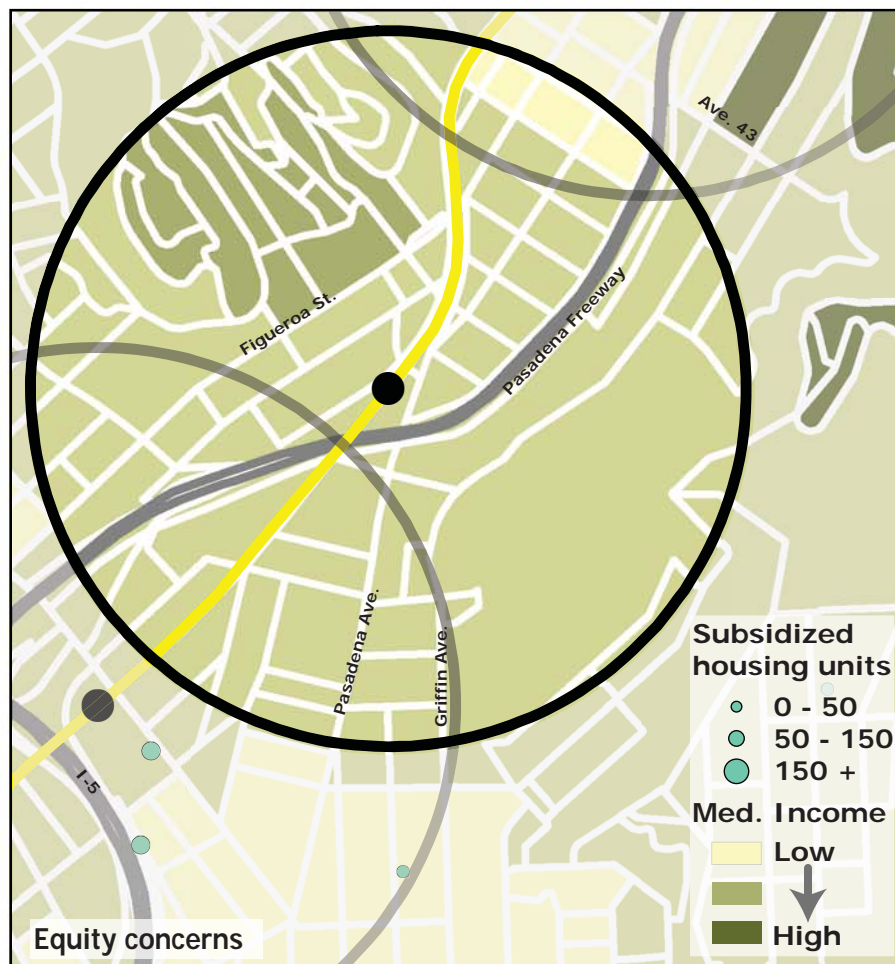
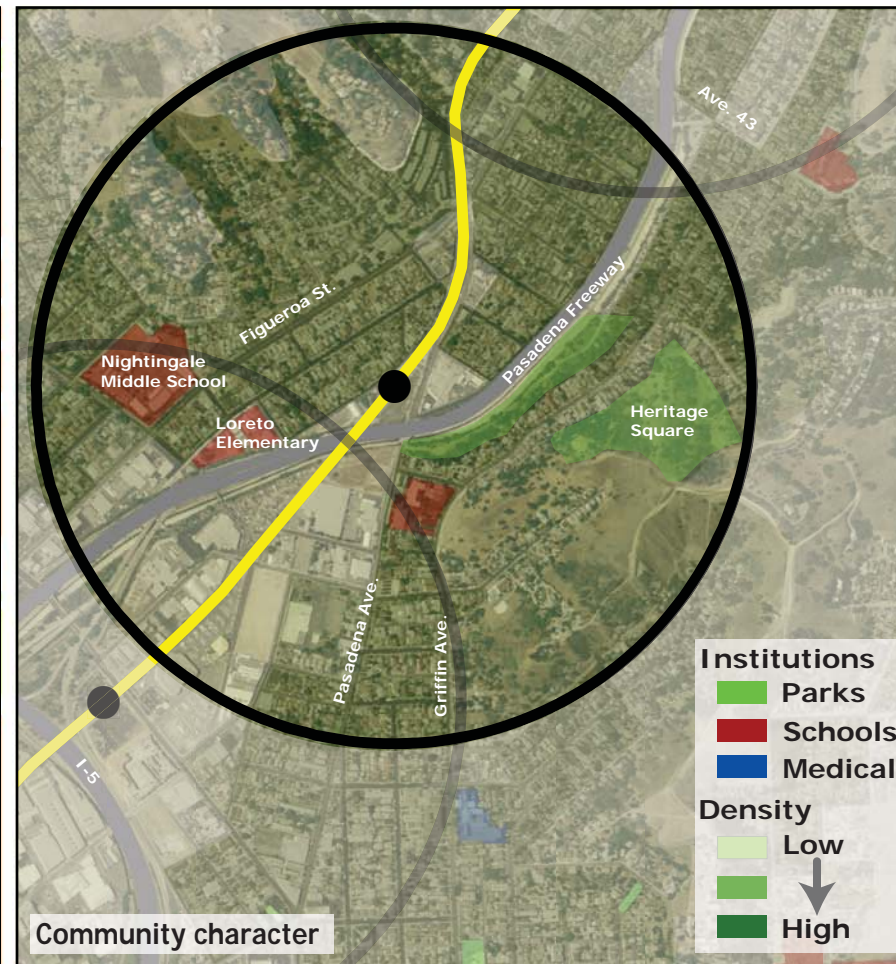
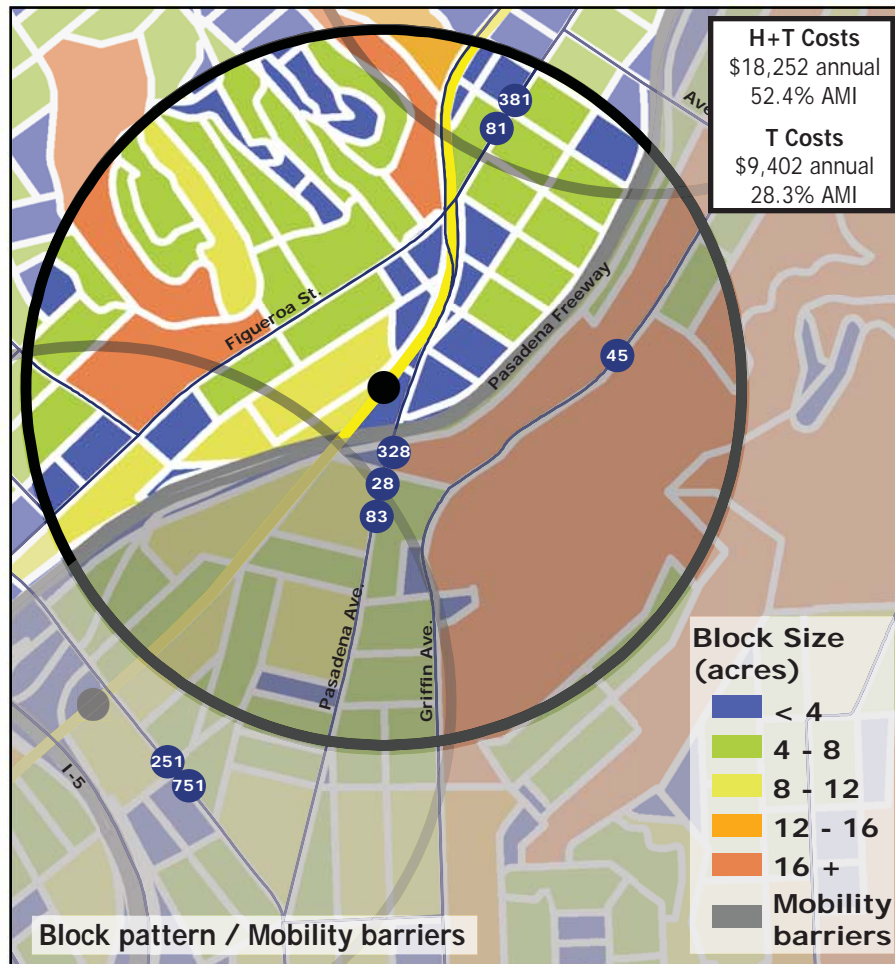
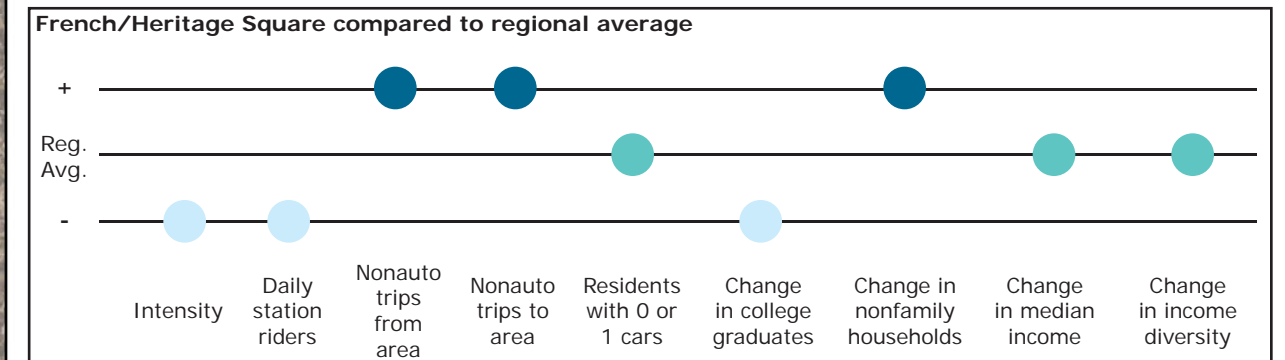


# Los Angeles TOD Typology and Case Study Project

## French/Heritage Square - Gold Line

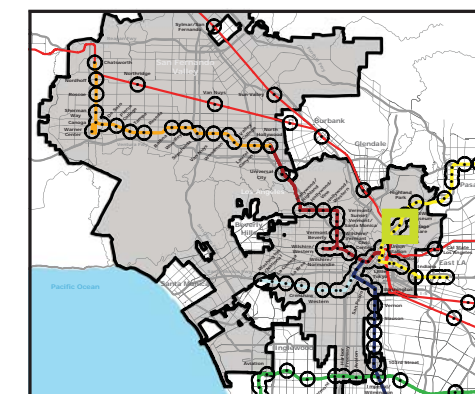
**Neighborhood Type** Suburban Neighborhood  
**Station Type** Street level, Low corridor ridership  
**Neighborhood Change** Stable Mixed Income  
**Development Opportunity** Low-moderate

Category	Screen	Value	Reads As
<b>Neighborhood Type (Uses)</b>	Use Mix	0.13 jobs/resident	Residential
	Intensity	22.3 persons/acre	Low
<b>Access and Mobility</b>	Daily station boardings	533 riders	Low
	Mobility barriers	freeways; block size	Auto-oriented
	Nonauto work trips from area	20.4%	High
	Nonauto work trips to area	22.4%	High
	Residents with 1 or 0 cars	57.9%	Moderate
<b>Neighborhood Change</b>	College graduates (1990-2000)	-0.4%	Decrease
	Nonfamily households (1990-2000)	+30.9%	Rapid increase
	Median Income (1990-2000)	-6.0%	Nominal change
	Income diversity (1990-2000)	-4.2%	Nominal change
	Affordable Units (2009-2015)	0 units, 0% expiring	No change
<b>Development Opportunity</b>	Underutilized Land	34.4 acres	Small, scattered
	Avg. commercial & industrial parcel	0.44 acres	Low



### Legend

- Freeway
- Station
- Gold Line
- Bus line
- Half-mile radius



October 20, 2009,  
Draft



Data sources: 1990 and 2000 Census SF3 Tables; USDA; City of Los Angeles; LA City Metro Transit Authority; County of Los Angeles Assessor's Office; HUD User; CTOD TOD database.