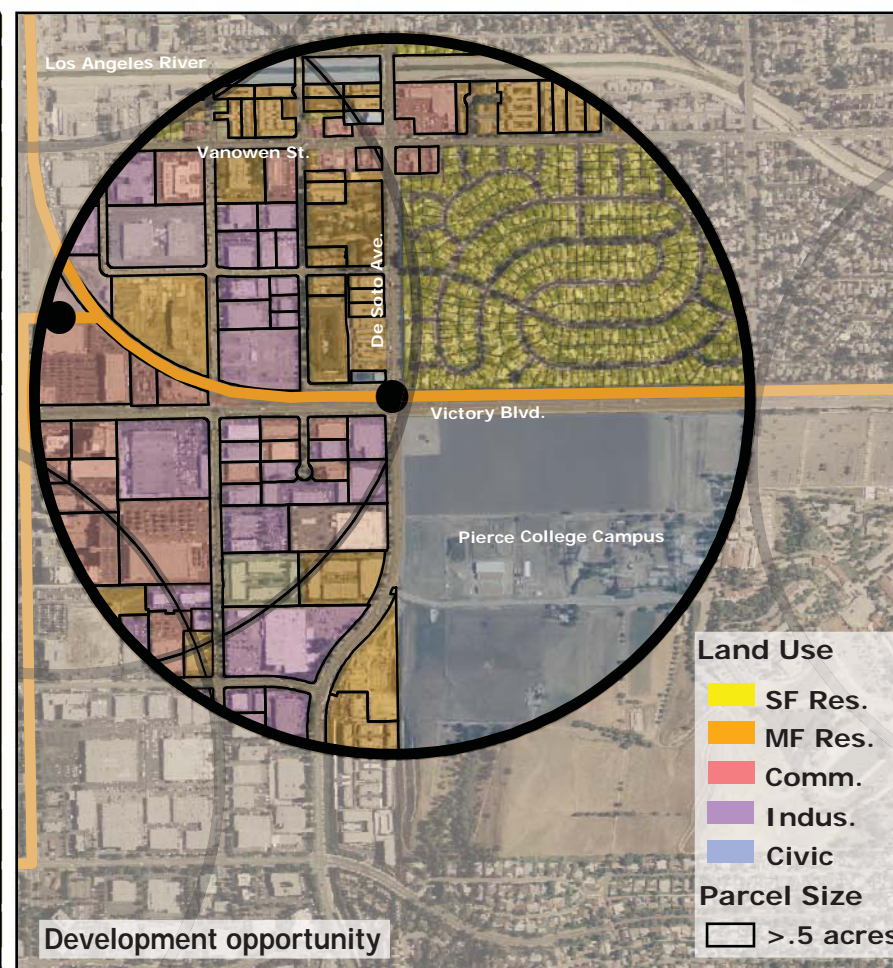
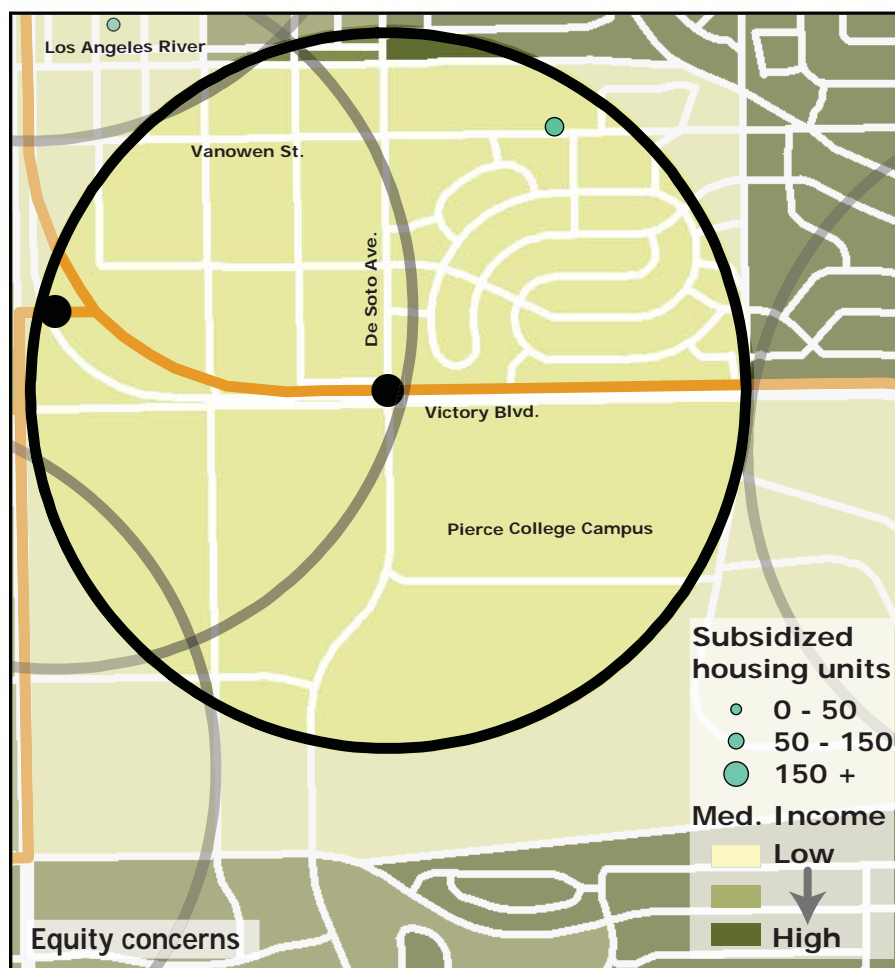
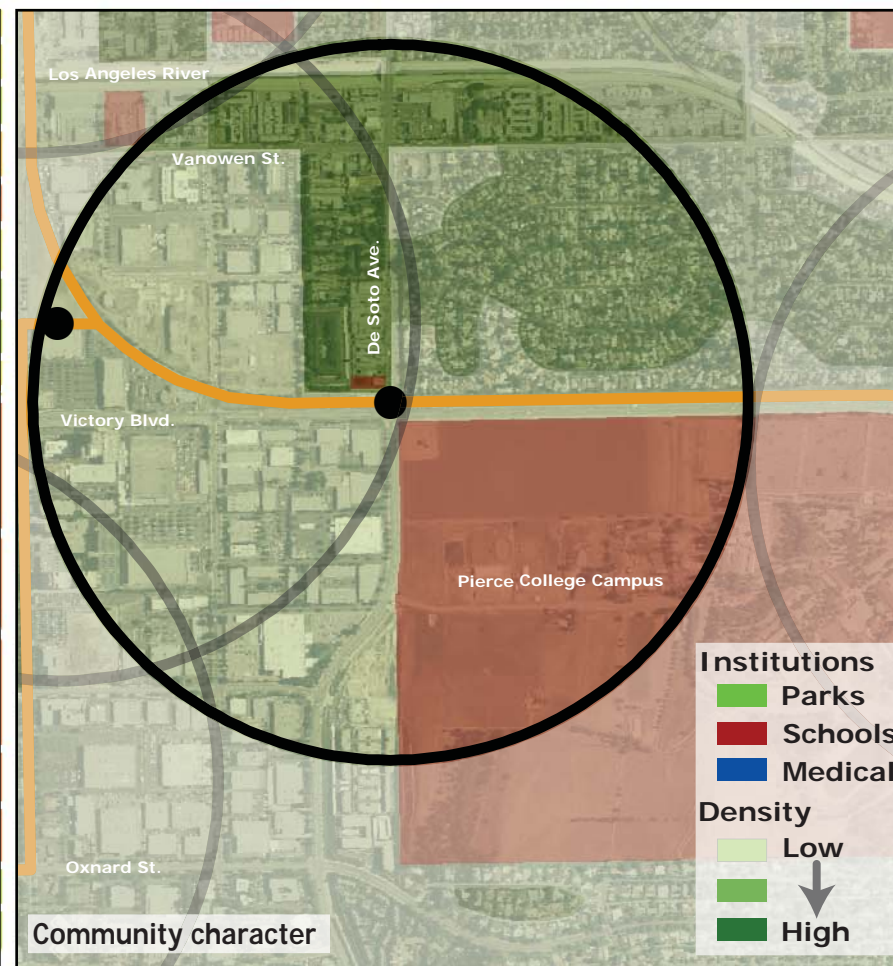
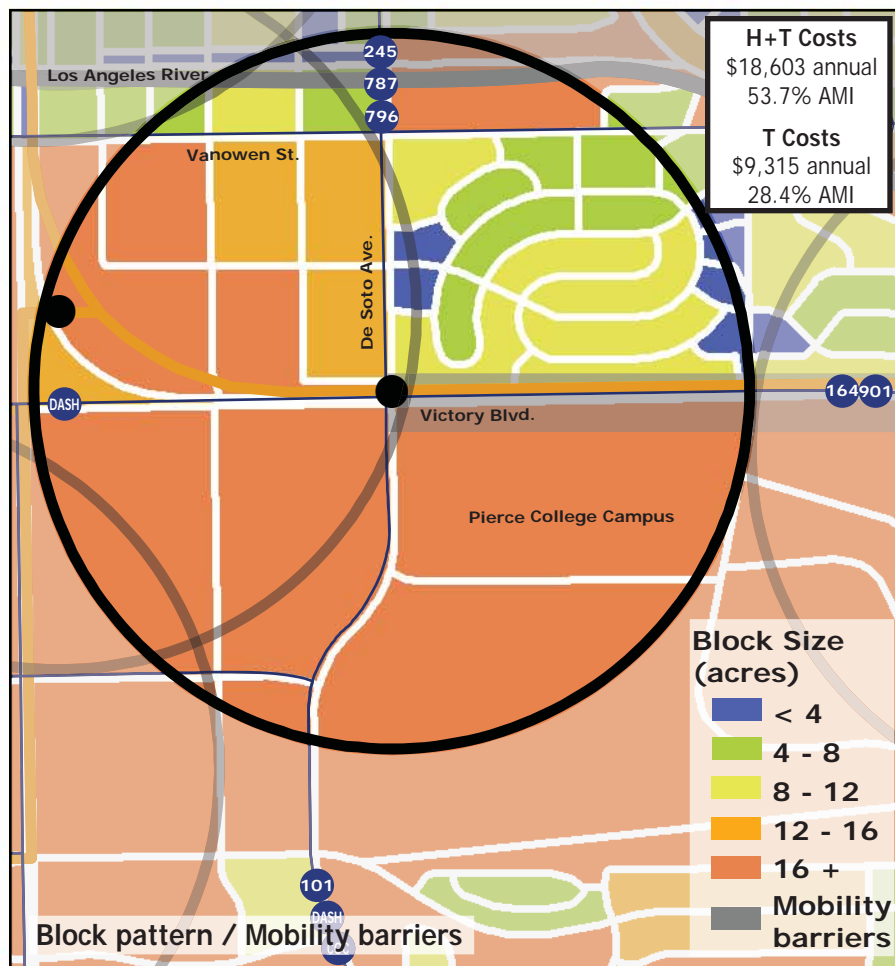
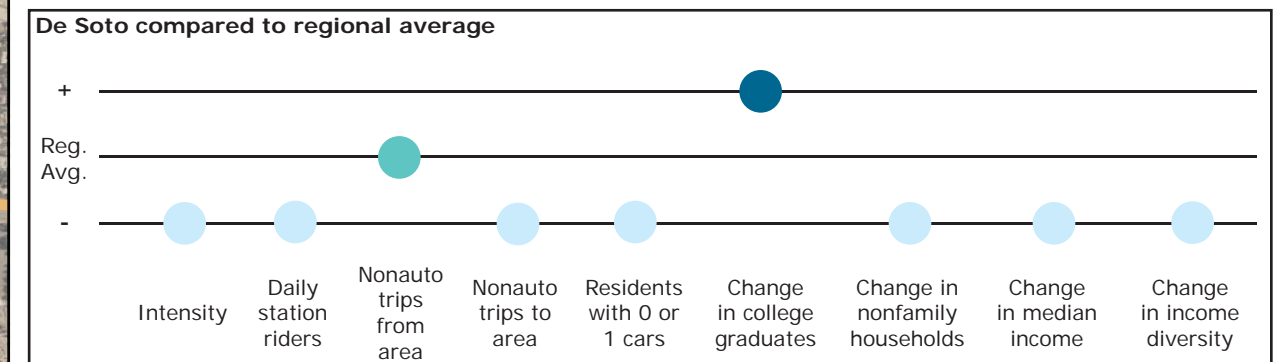


Los Angeles TOD Typology and Case Study Project

De Soto - Orange Line BRT

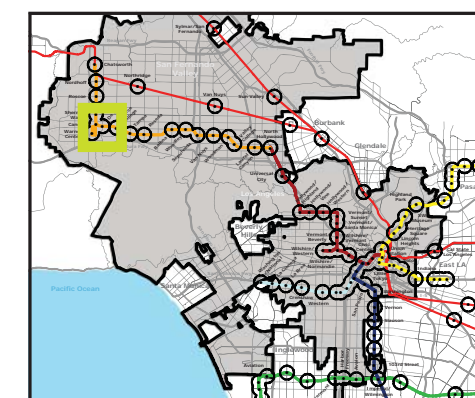
Neighborhood Type Neighborhood Center
Station Type Street Level, Low corridor ridership
Neighborhood Change Potential for gentrification
Development Opportunity High

Category	Screen	Value	Reads As
Neighborhood Type (Uses)	Use Mix	1.07 jobs/resident	Mixed-Use
	Intensity	21.55 persons/acre	Low
Access and Mobility	Daily station boardings	659 riders	Low
	Mobility barriers	block size	Semi-walkable
	Nonauto work trips from area	12.1%	Moderate
	Nonauto work trips to area	5.8%	Low
	Residents with 1 or 0 cars	39%	Low
Neighborhood Change	College graduates (1990-2000)	+35.4%	Rapid Increase
	Nonfamily households (1990-2000)	-10.6%	Rapid decrease
	Median Income (1990-2000)	-19.9%	Decrease
	Income diversity (1990-2000)	-6.7%	Decrease
	Affordable Units (2009-2015)	101 units, 0% expiring	No change
Development Opportunity	Underutilized Land	87.5 acres	Few, large
	Avg. commercial & industrial parcel	2.88 acres	High



Legend

- Freeway
- Transit
- Station
- Orange Line BRT
- Bus line
- Half-mile radius



November 5, 2009,
Draft



Data sources: 1990 and 2000 Census SF3 Tables; USDA; City of Los Angeles; LA City Metro Transit Authority; County of Los Angeles Assessor's Office; HUD User; CTOD TOD database.