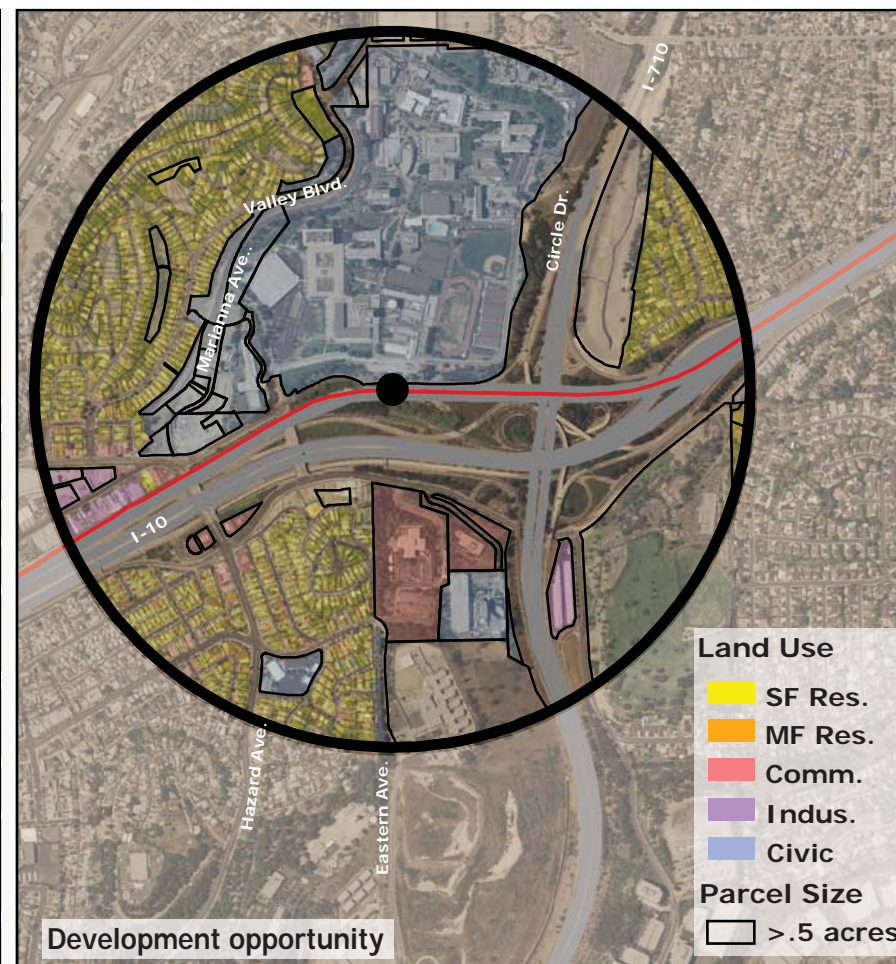
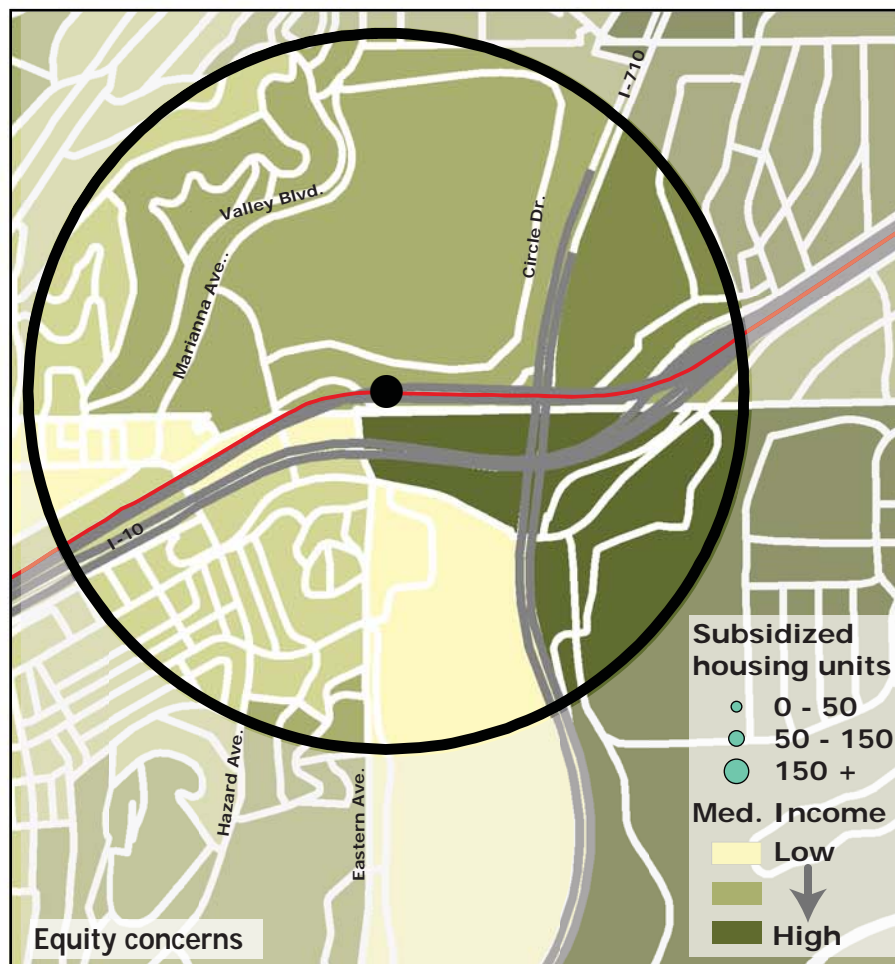
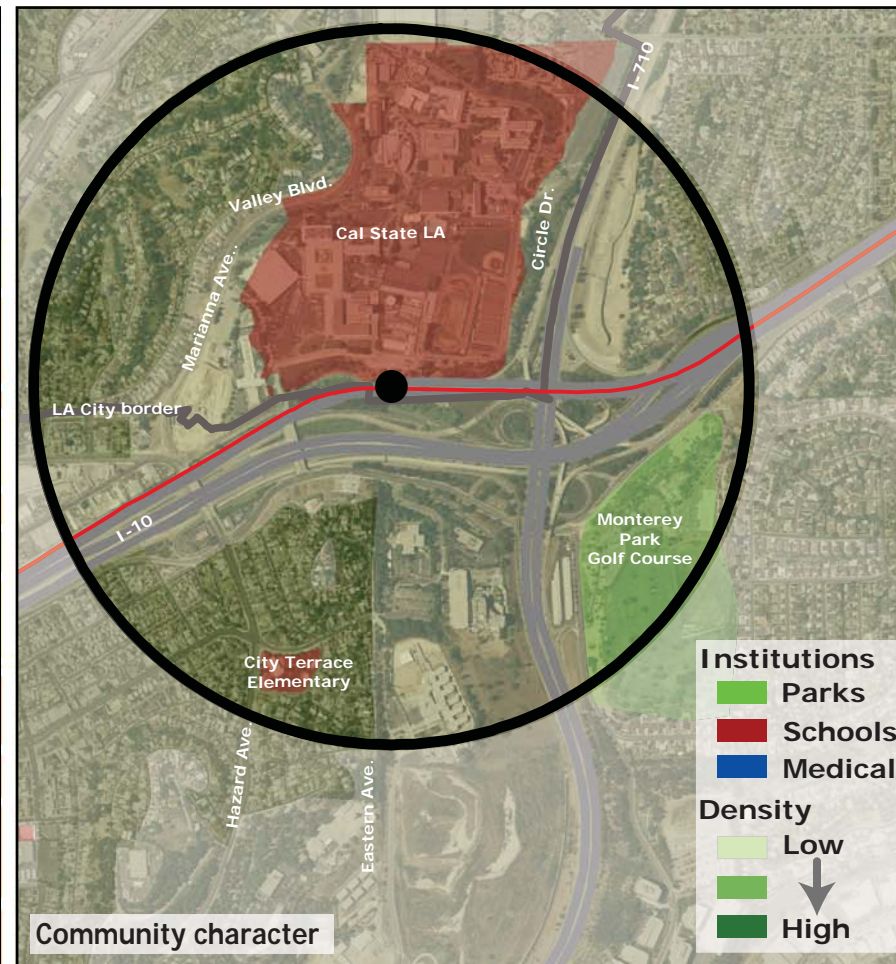
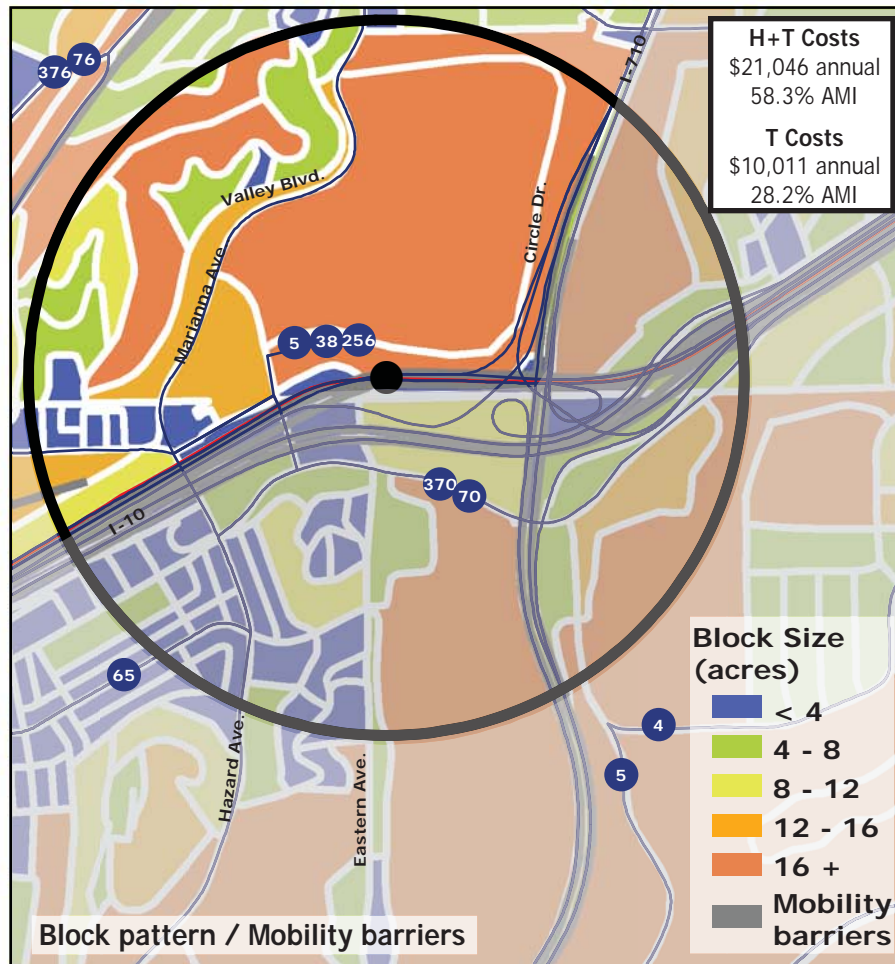
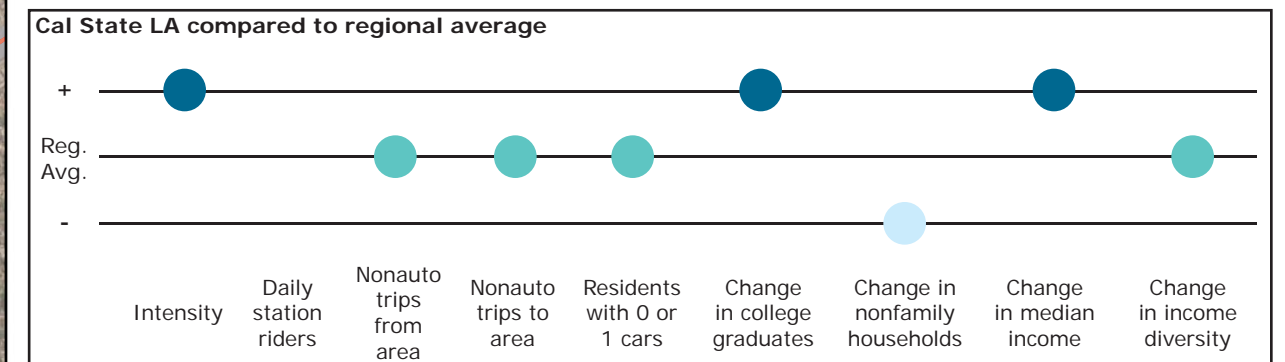


Los Angeles TOD Typology and Case Study Project

Cal State LA - Metrolink

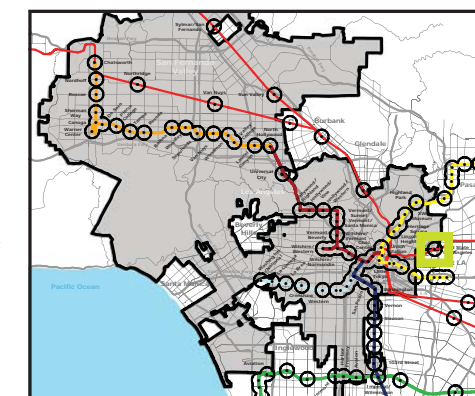
Neighborhood Type Suburban Neighborhood
Station Type Elevated
Neighborhood Change Potential for gentrification
Development Opportunity Low-moderate

Category	Screen	Value	Reads As
Neighborhood Type (Uses)	Use Mix	0.34 jobs/resident	Residential
	Intensity	11.0 persons/acre	Low
Access and Mobility	Daily station boardings	n/a	
	Mobility barriers	freeways; block size	Auto-oriented
	Nonauto work trips from area	9.1%	Moderate
	Nonauto work trips to area	12.5%	Moderate
	Residents with 1 or 0 cars	48.6%	Moderate
Neighborhood Change	College graduates (1990-2000)	+194%	Rapid increase
	Nonfamily households (1990-2000)	-11.8%	Rapid decrease
	Median Income (1990-2000)	+40.1%	Rapid increase
	Income diversity (1990-2000)	-3.2%	Nominal change
	Affordable Units (2009-2015)	0 units, 0% expiring	No change
Development Opportunity	Underutilized Land	5.6 acres	Few, scattered
	Avg. commercial & industrial parcel	0.91 acres	Moderate



Legend

- Freeway
- Transit
- Station
- Metrolink Rail Line
- Bus line
- Half-mile radius



October 20, 2009,
Draft



Data sources: 1990 and 2000 Census SF3 Tables; USDA; City of Los Angeles; LA City Metro Transit Authority; County of Los Angeles Assessor's Office; HUD User; CTOD TOD database.