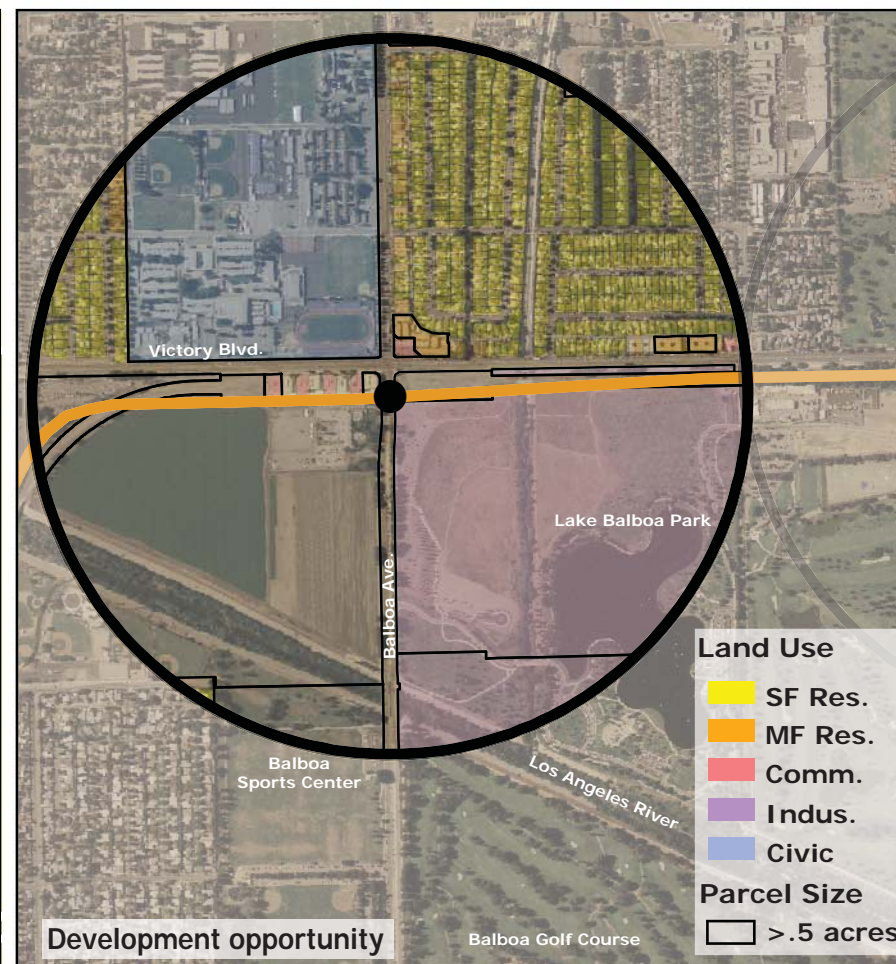
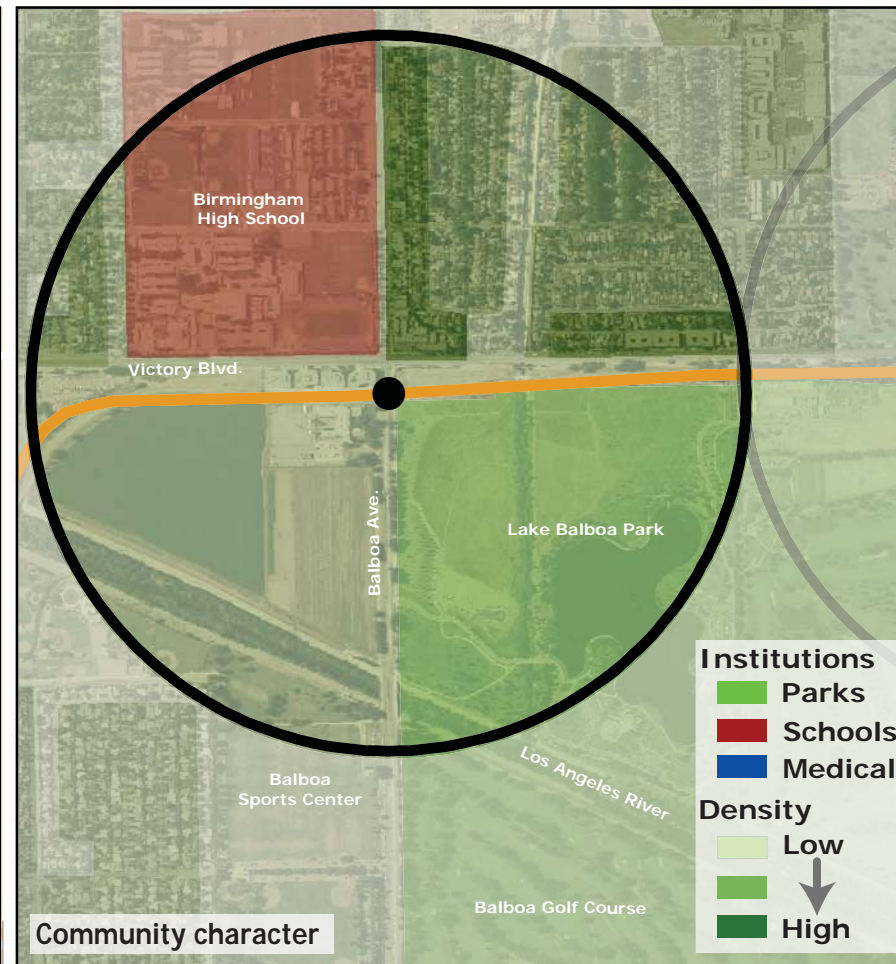
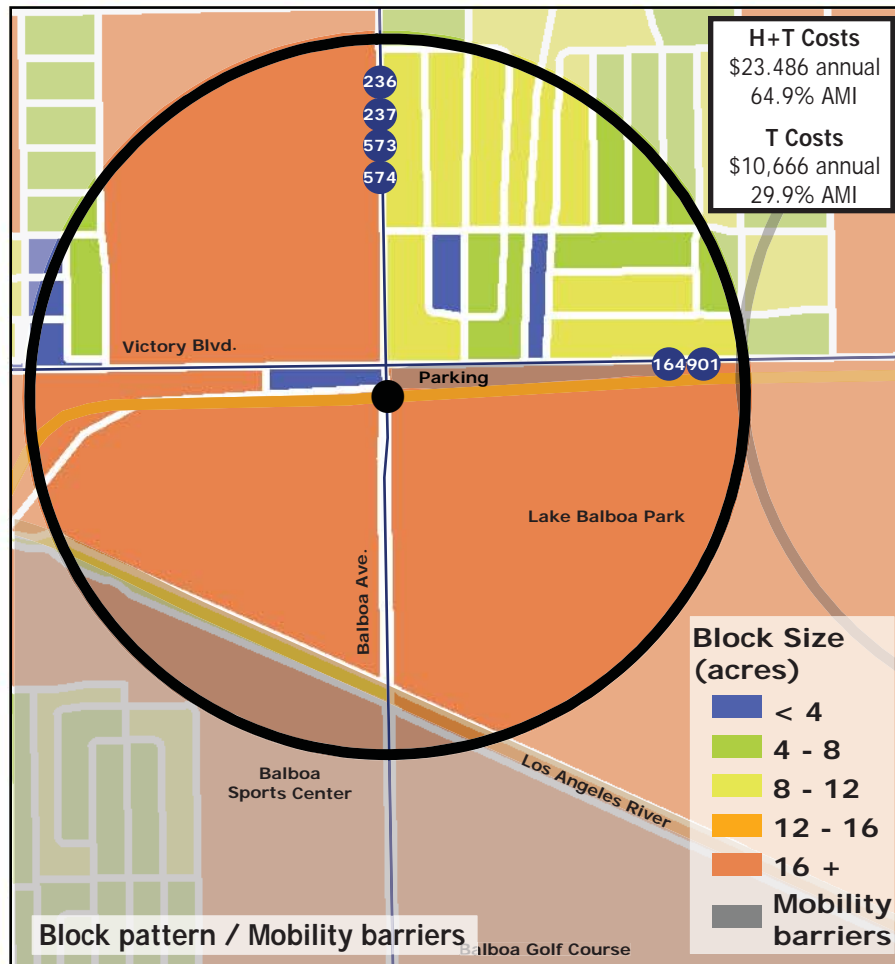
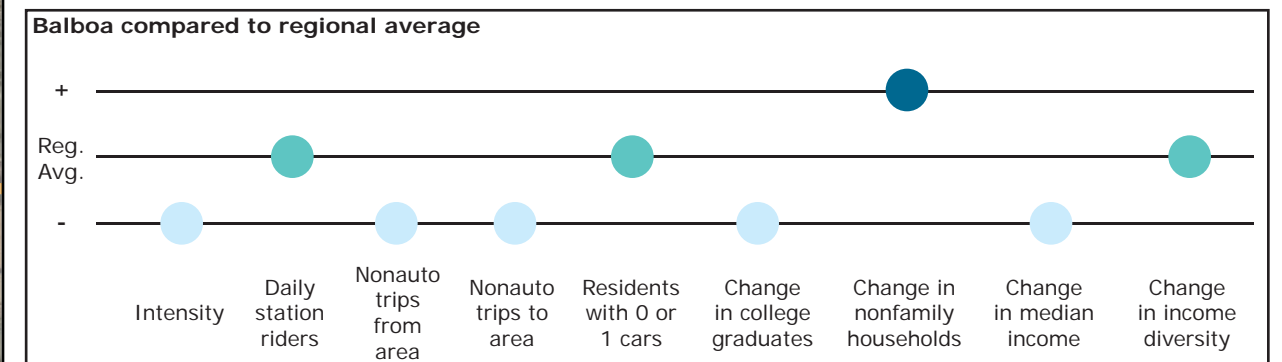


Los Angeles TOD Typology and Case Study Project

Balboa - Orange Line BRT

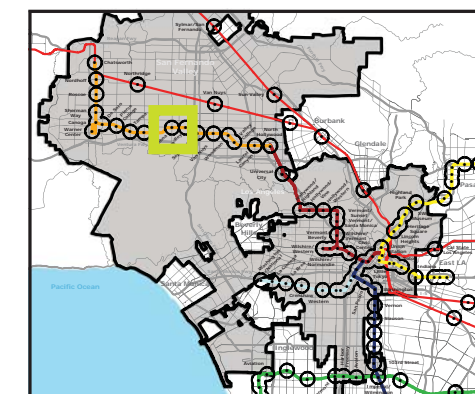
Neighborhood Type Neighborhood Center
Station Type Street Level, Moderate corridor ridership
Neighborhood Change Becoming more low income
Land Opportunity Low

Category	Screen	Value	Reads As
Neighborhood Type (Uses)	Use Mix	0.53 jobs/resident	Mixed-Use
	Intensity	7.0 persons/acre	Low
Access and Mobility	Daily station boardings	1,255 riders	Moderate
	Mobility barriers	2 (block size)	Semi-walkable
	Nonauto work trips from area	7.6%	Low
	Nonauto work trips to area	6.0%	Low
	Residents with 1 or 0 cars	43.6%	Moderate
Neighborhood Change from 1990 to 2000	College graduates (1990-2000)	-1.1%	Decrease
	Nonfamily households (1990-2000)	+27.6%	Rapid increase
	Median Income (1990-2000)	-19.0%	Decrease
	Income diversity (1990-2000)	-0.5%	Nominal change
	Affordable Units (2009-2015)	0 units, 0% expiring	No change
Development Opportunity	Underutilized Land	0.86 acres	Very few
	Avg. commercial & industrial parcel	0.85 acres	Moderate



Legend

- Freeway
- Transit
- Station
- Orange Line BRT
- Bus line
- Half-mile radius



November 5, 2009,
Draft

Data sources: 1990 and 2000 Census SF3 Tables; USDA; City of Los Angeles; LA City Metro Transit Authority; County of Los Angeles Assessor's Office; HUD User; CTOD TOD database.