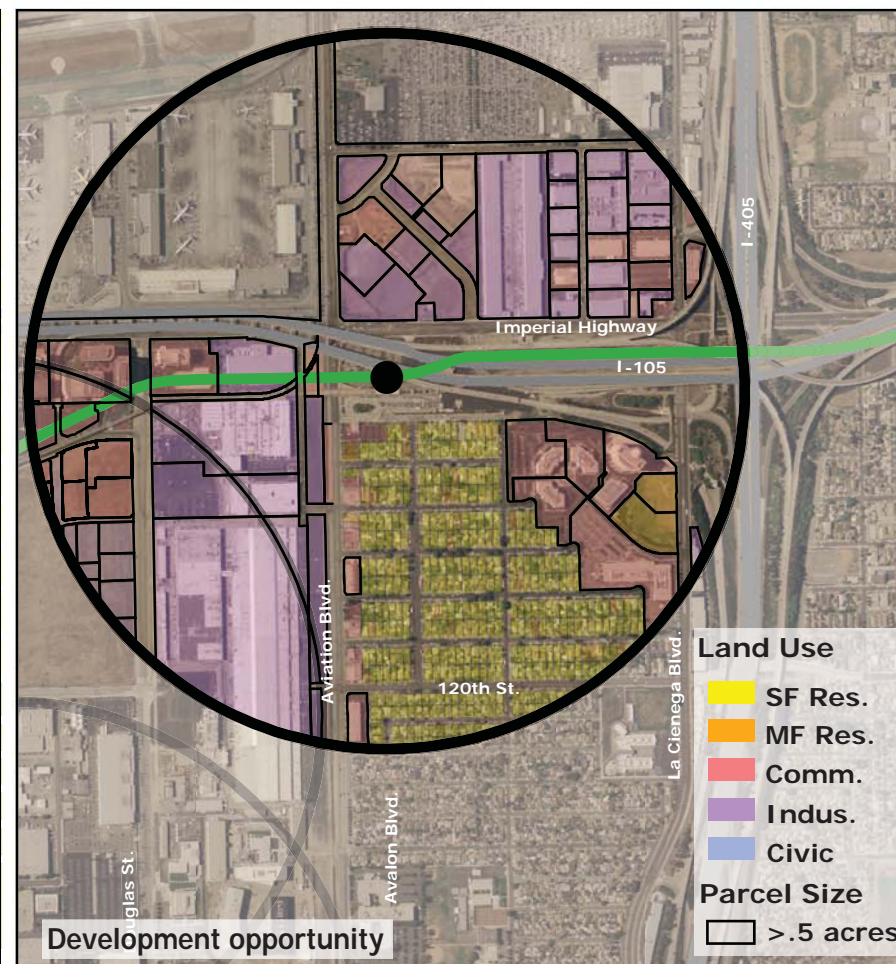
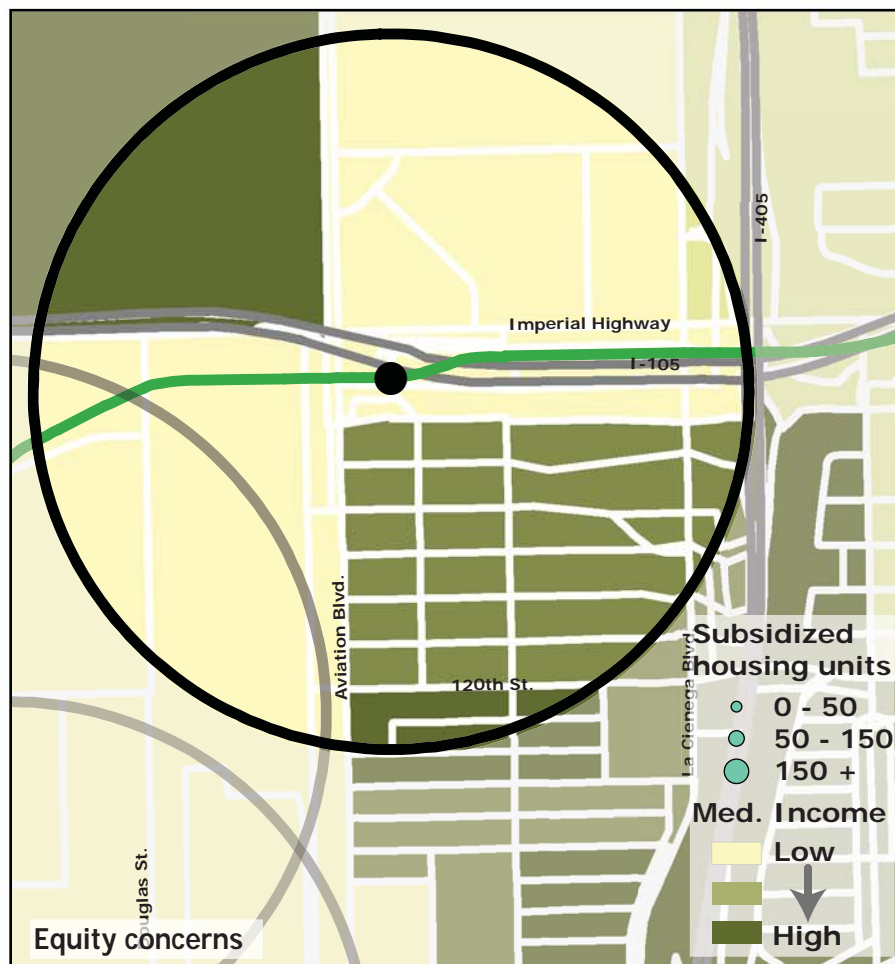
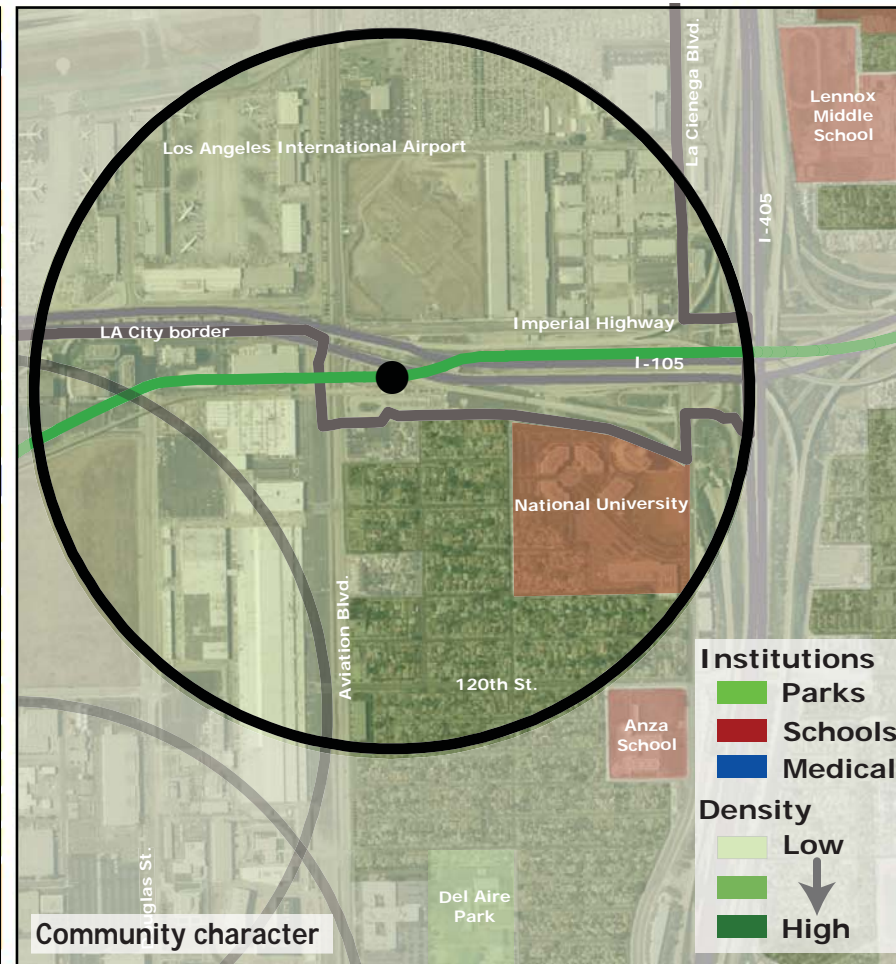
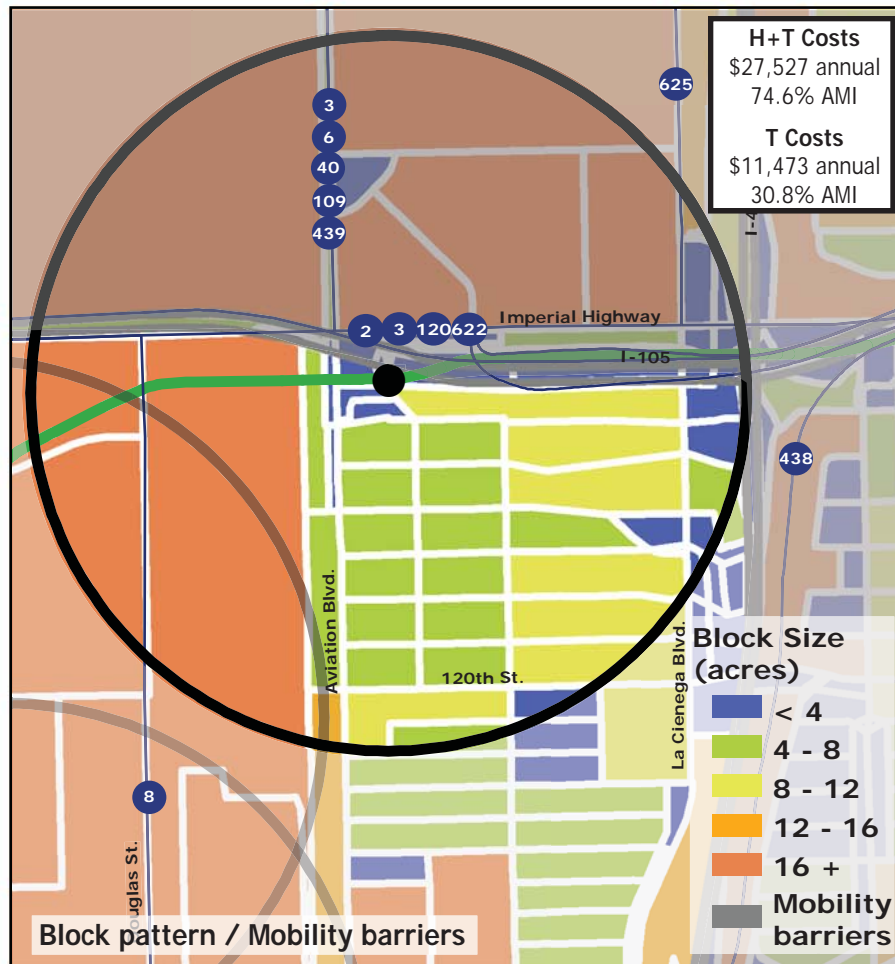
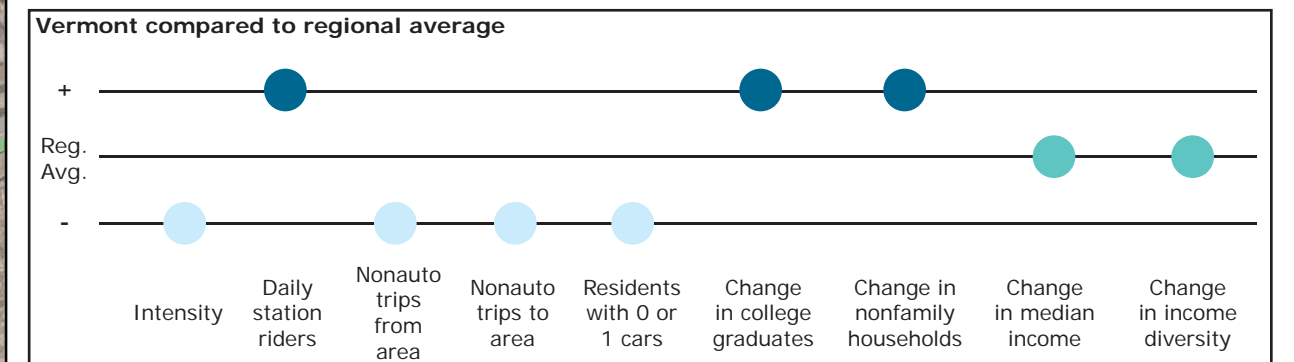


# Los Angeles TOD Typology and Case Study Project

## Aviation - Green Line

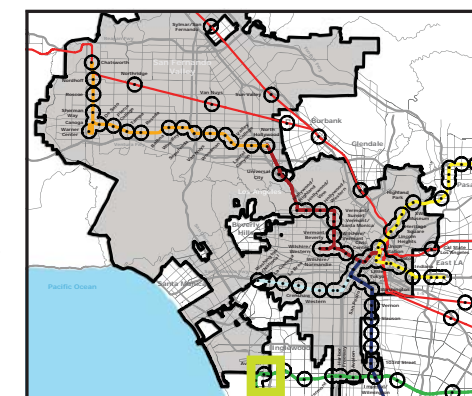
**Neighborhood Type** Office/Industrial District  
**Station Type** Elevated, High corridor ridership  
**Neighborhood Change** Potential for gentrification  
**Development Opportunity** High-moderate

Category	Screen	Value	Reads As
<b>Neighborhood Type (Uses)</b>	Use Mix	5.47 jobs/resident	Employment Area
	Intensity	12.3 persons/acre	Low
<b>Access and Mobility</b>	Daily station boardings	3,477 riders	High
	Mobility barriers	freeways; block size	Auto-oriented
	Nonauto work trips from area	7.9%	Low
	Nonauto work trips to area	5.9%	Low
	Residents with 1 or 0 cars	28.6%	Low
<b>Neighborhood Change</b>	College graduates (1990-2000)	+82.7%	Rapid increase
	Nonfamily households (1990-2000)	+25.7%	Rapid increase
	Median Income (1990-2000)	-8.3%	Nominal change
	Income diversity (1990-2000)	-4.9%	Nominal change
	Affordable Units (2009-2015)	0 units, 0% expiring	No change
<b>Development Opportunity</b>	Underutilized Land	69 acres	Few, clustered
	Avg. commercial & industrial parcel	3.2 acres	High



### Legend

- Freeway
- Transit
- Station
- Green Line
- Bus line
- Half-mile radius



October 20, 2009, Draft

Data sources: 1990 and 2000 Census SF3 Tables; USDA; City of Los Angeles; LA City Metro Transit Authority; County of Los Angeles Assessor's Office; HUD User; CTOD TOD database.

