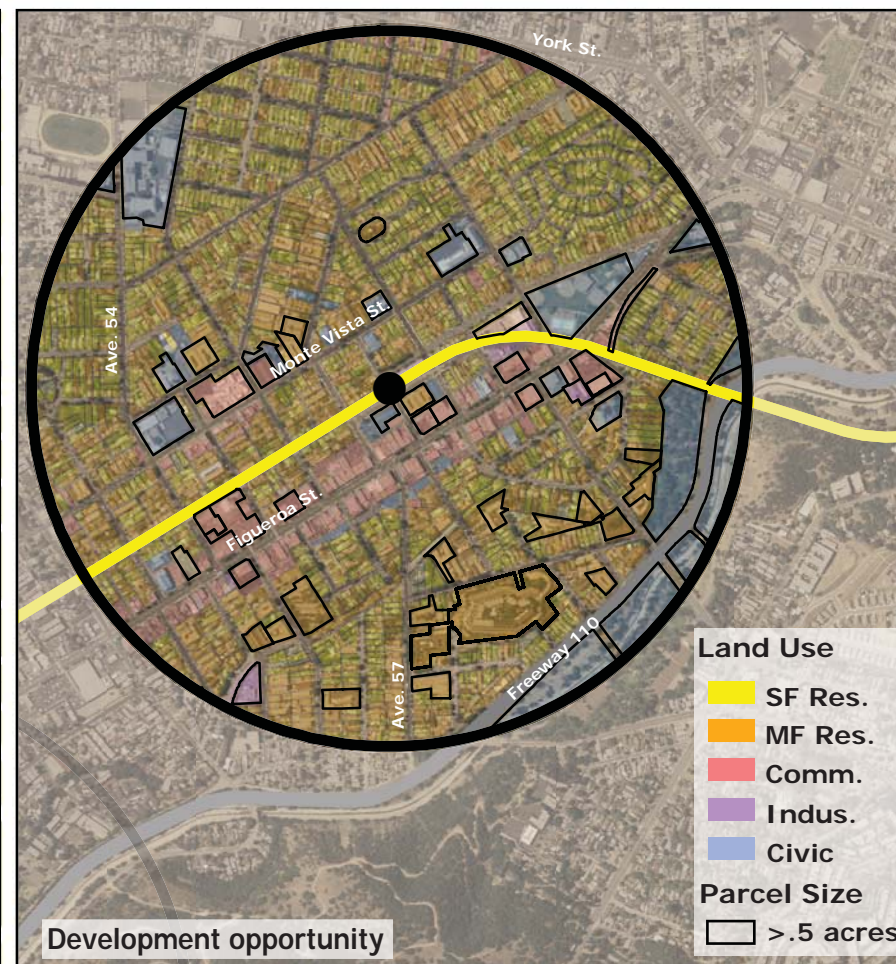
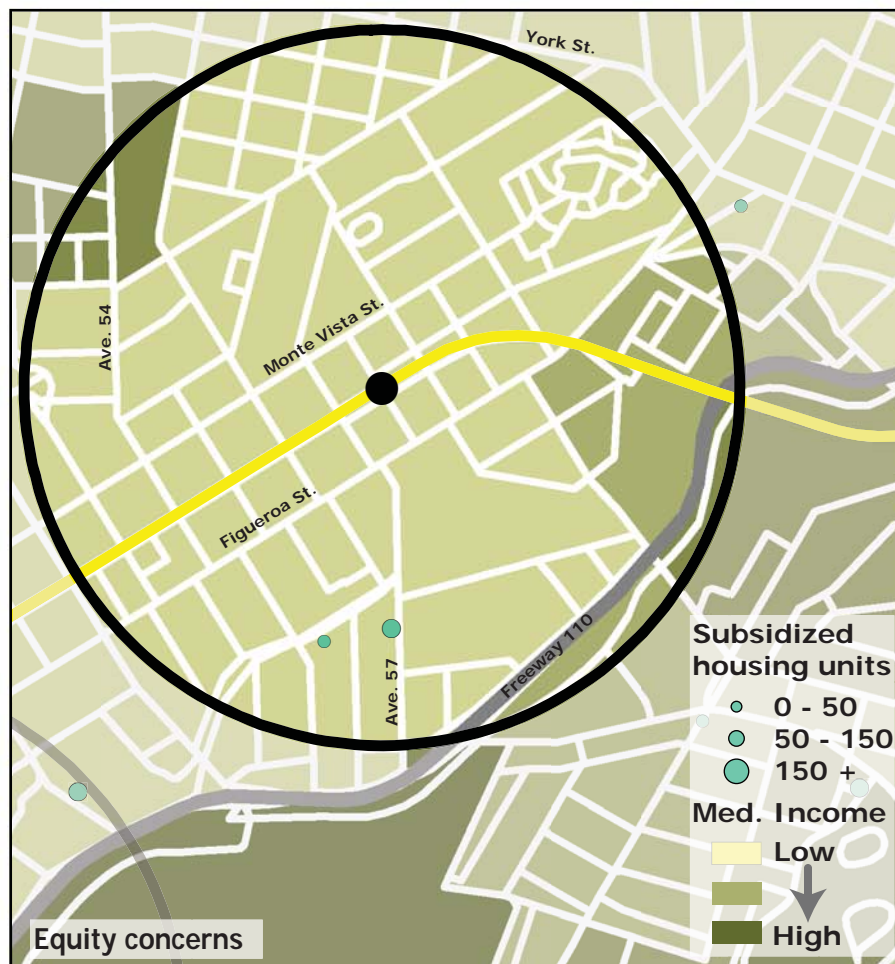
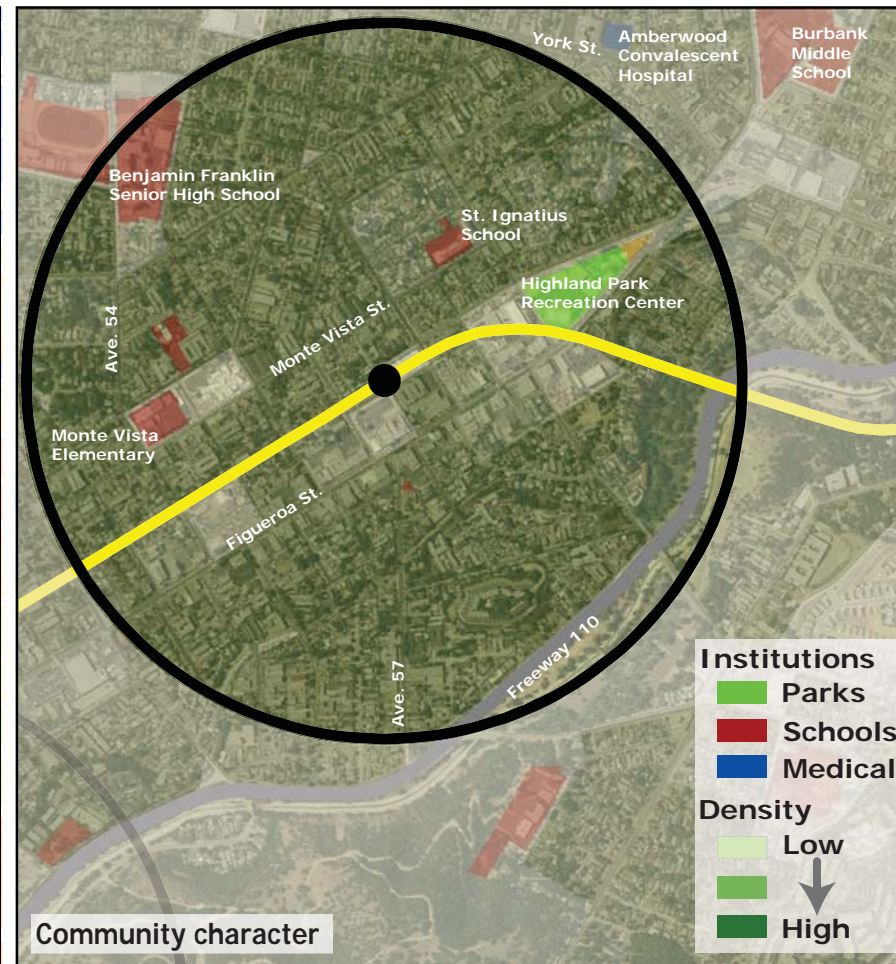
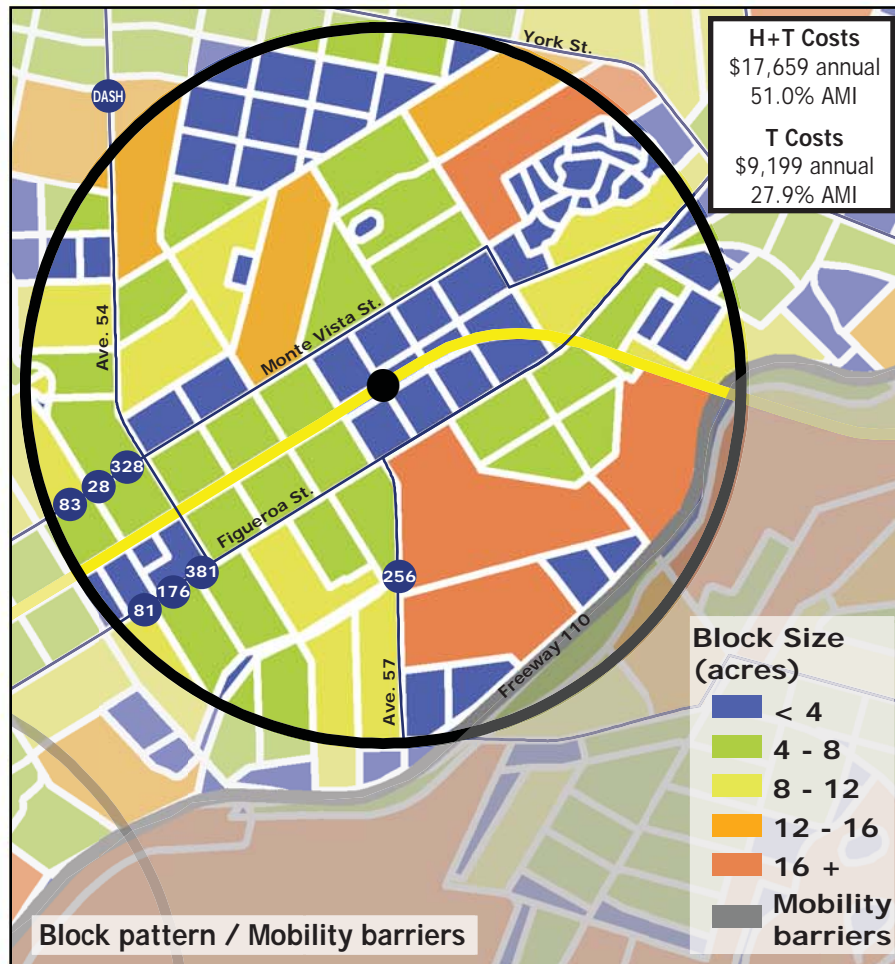
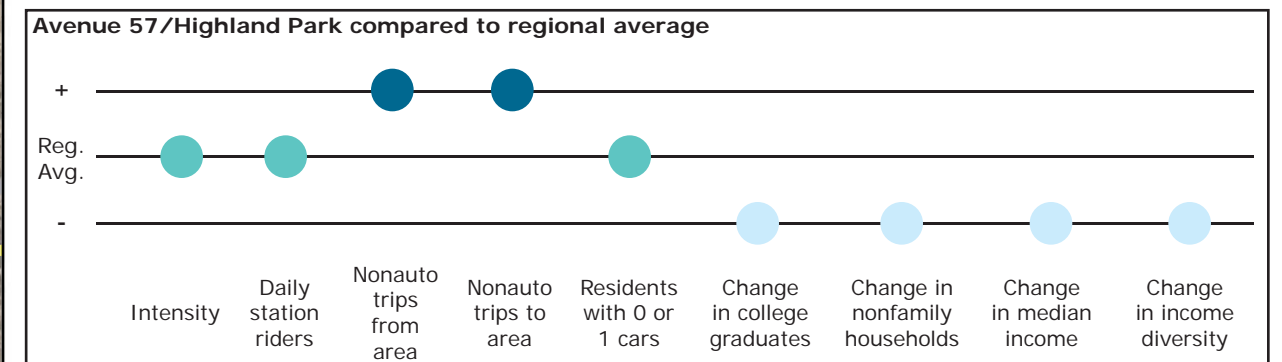


Los Angeles TOD Typology and Case Study Project

Avenue 57/Highland Park - Gold Line

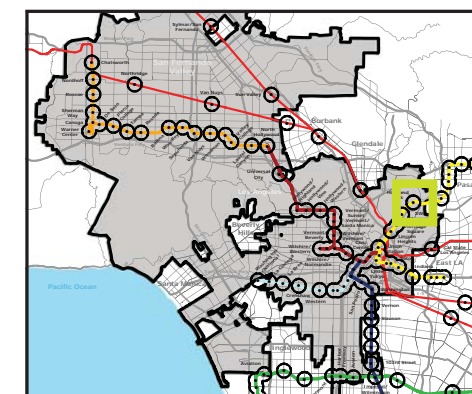
Neighborhood Type Transit Neighborhood
Station Type Street level, High corridor ridership
Neighborhood Change Mixed Income
Development Opportunity Low

Category	Screen	Value	Reads As
Neighborhood Type (Uses)	Use Mix	0.07 jobs/resident	Residential
	Intensity	36.3 persons/acre	Moderate
Access and Mobility	Daily station boardings	1,646 riders	Moderate
	Mobility barriers	freeway; block size	Semi-walkable
	Nonauto work trips from area	22.4%	High
	Nonauto work trips to area	22.9%	High
	Residents with 1 or 0 cars	64.5%	Moderate
Neighborhood Change	College graduates (1990-2000)	-15.6%	Rapid decrease
	Nonfamily households (1990-2000)	-17.3%	Rapid decrease
	Median Income (1990-2000)	-12.4%	Decrease
	Income diversity (1990-2000)	-6.4%	Decrease
	Affordable Units (2009-2015)	58 units, 100% expiring	High loss
Development Opportunity	Underutilized Land	20.4 acres	Few, clustered
	Avg. commercial & industrial parcel	0.25 acres	Low



Legend

- Freeway
- Station
- Gold Line
- Bus line
- Half-mile radius



October 20, 2009,
Draft

Data sources: 1990 and 2000 Census SF3 Tables; USDA; City of Los Angeles; LA City Metro Transit Authority; County of Los Angeles Assessor's Office; HUD User; CTOD TOD database.