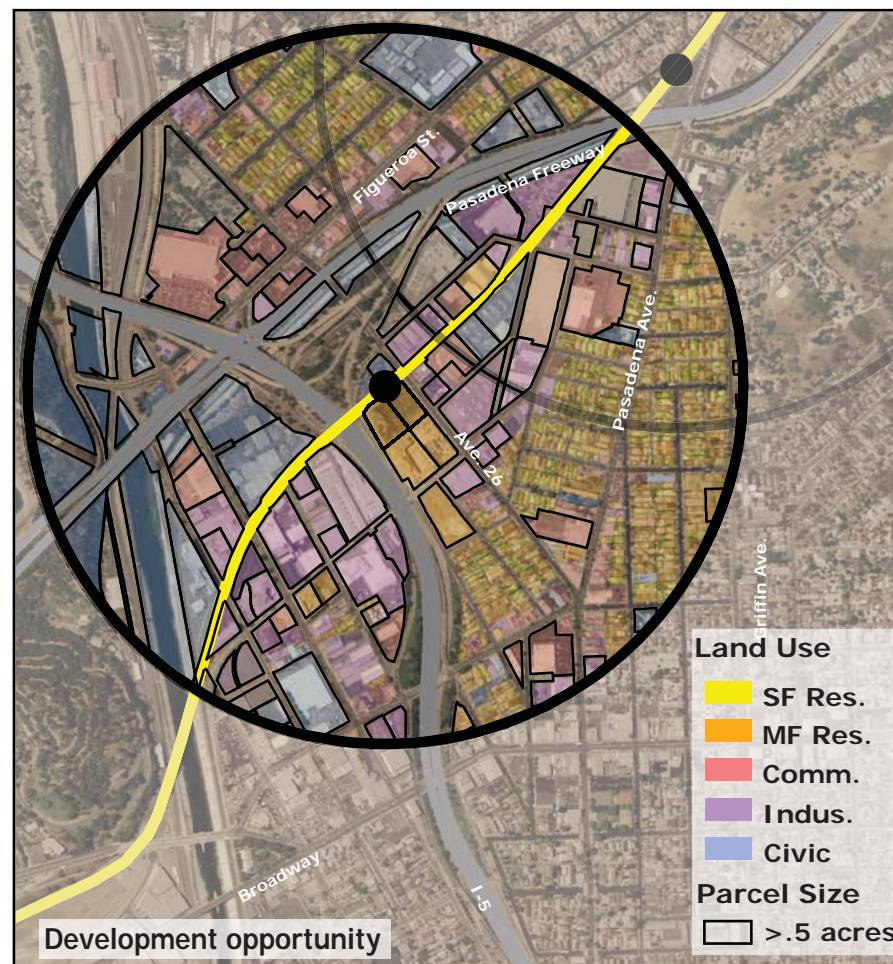
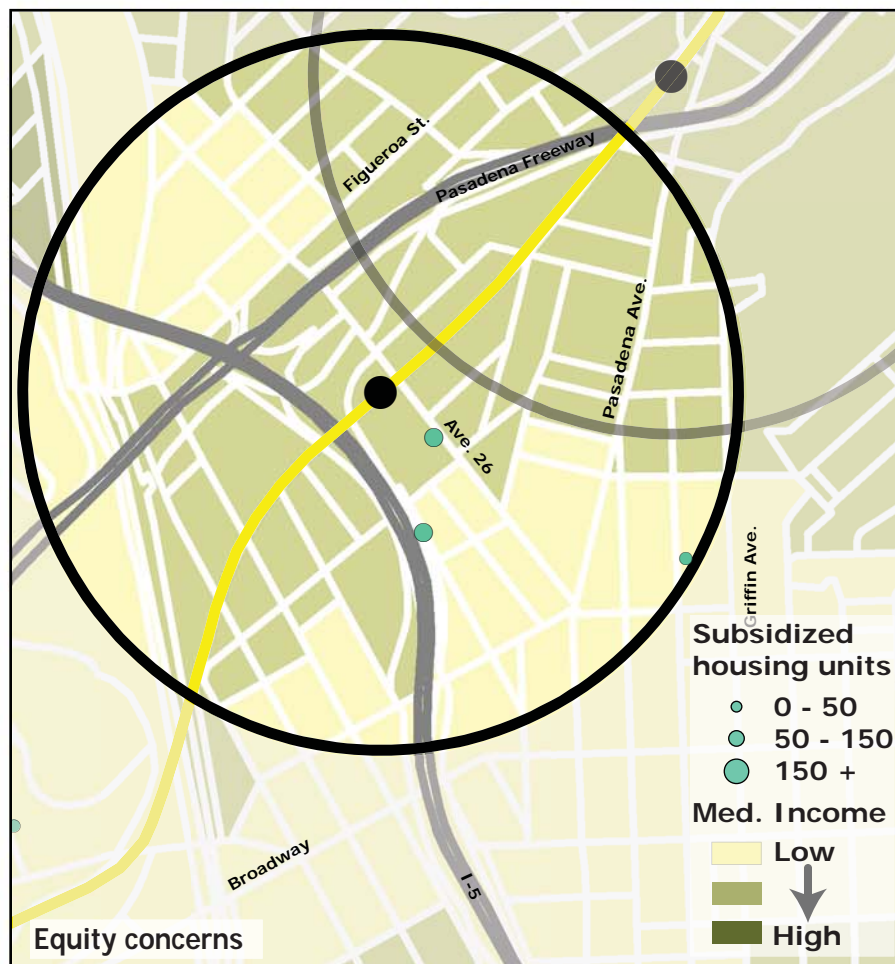
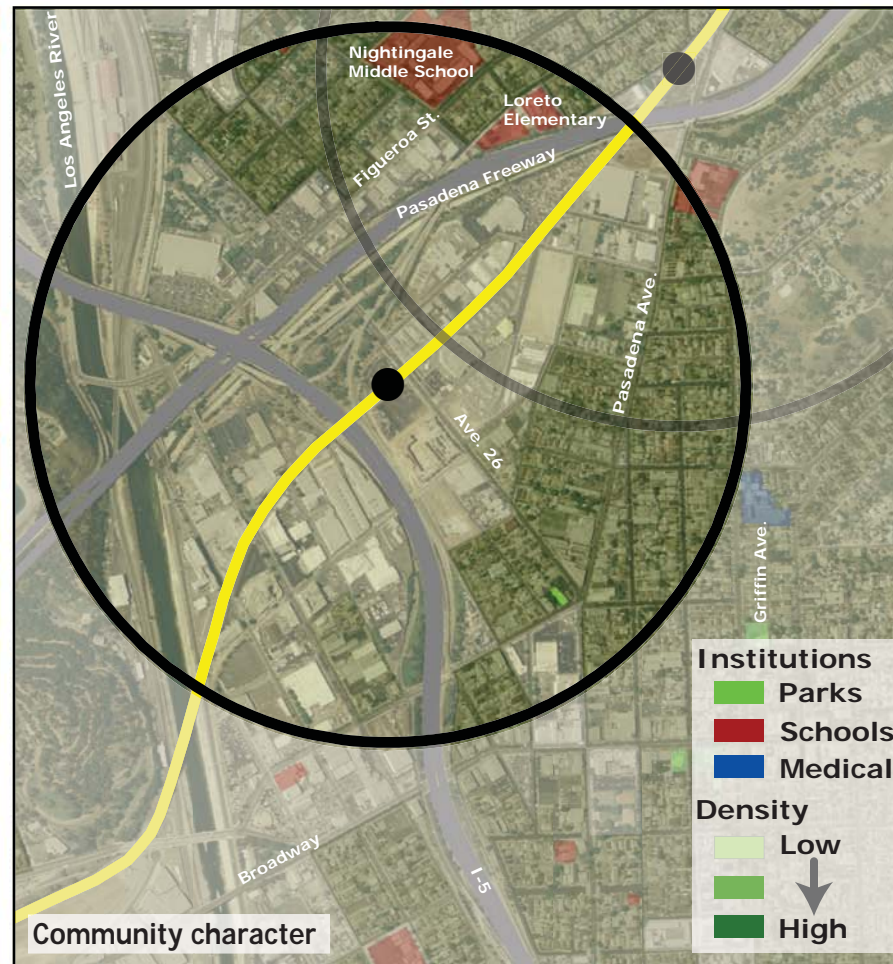
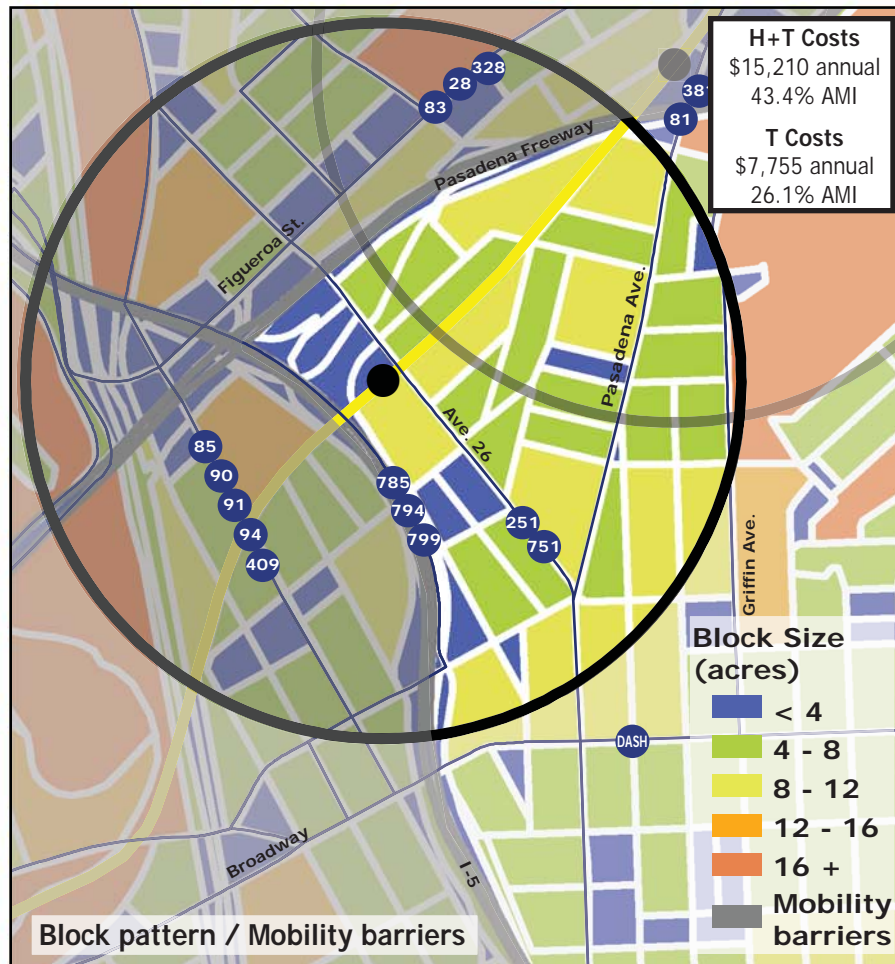
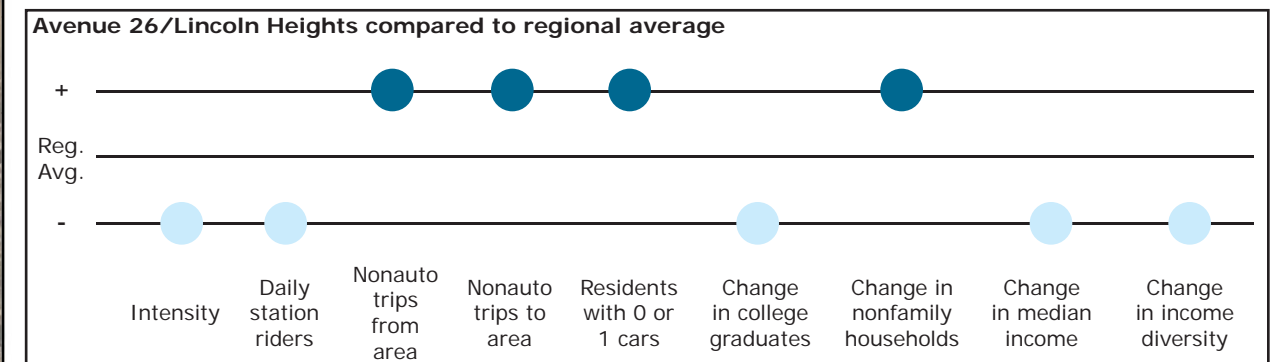


Los Angeles TOD Typology and Case Study Project

Avenue 26/Lincoln Heights - Gold Line

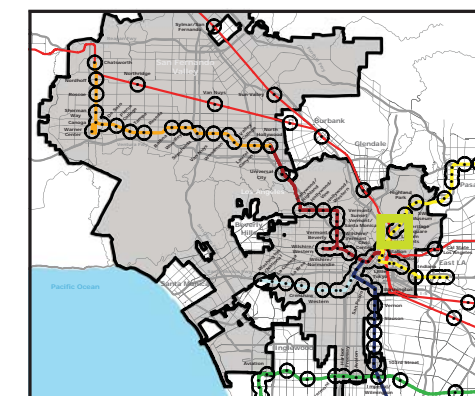
Neighborhood Type Suburban Neighborhood
Station Type Street level, Low corridor ridership
Neighborhood Change Becoming more low income
Development Opportunity Low-moderate

Category	Screen	Value	Reads As
Neighborhood Type (Uses)	Use Mix	0.05 jobs/resident	Residential
	Intensity	19.8 persons/acre	Low
Access and Mobility	Daily station boardings	758 riders	Low
	Mobility barriers	freeway proximity	Auto-oriented
	Nonauto work trips from area	35.8%	High
	Nonauto work trips to area	24.1%	High
	Residents with 1 or 0 cars	72.4%	High
Neighborhood Change	College graduates (1990-2000)	-2.6%	Decrease
	Nonfamily households (1990-2000)	+6.5%	Increase
	Median Income (1990-2000)	-19.5%	Decrease
	Income diversity (1990-2000)	-9.2%	Decrease
	Affordable Units (2009-2015)	244 units, 0% expiring	No change
Development Opportunity	Underutilized Land	73 acres	Large, scattered
	Avg. commercial & industrial parcel	0.53 acres	Moderate



Legend

- Freeway
- Station
- Gold Line
- Bus line
- Half-mile radius



October 20, 2009,
Draft

Data sources: 1990 and 2000 Census SF3 Tables; USDA; City of Los Angeles; LA City Metro Transit Authority; County of Los Angeles Assessor's Office; HUD User; CTOD TOD database.